

ON THIS RESERVOIR
PROHIBITED
 TOILETS
 ARE
 ACCOMMODATION
 AND/OR
 SLEEPING
 BOATS
 CONTAINING




OVERHEAD POWER LINES CROSSING
 FROM THIS POINT HAVE
 WATERS ACCESSIBLE
DANGER

S.E.C.

HAZARDOUS TO BOATING
 STORAGE AND CAN BE
 LANDFORMS EXIST WITHIN THIS
 STANDING AND FLOATING
 TIMBER AND SUBMERGED
 WATER LEVELS AND BOATING
 CONDITIONS AT THIS STORAGE
 MAY VARY FROM DAY TO DAY

DANGER



SAFE BOATING IS NO ACCIDENT

local knowledge
 Seek up-to-date
 depths, currents and other
 - conditions of tides,
 - Within 50m of water's
 floating structures
 other vessels and fixed
 - Within 50m of swimmers,
 keep your **distance**
 and remember to
 Operate at a **Safe Speed**



Ensure you have the correct
safety equipment
 for the area you
 intend to operate in
 - refer to chart on this map



Ensure you have the
Required Type PFD
 for everyone on board



Don't drink and boat
 .00 blood alcohol limit when
 in charge of a boat applies
 for under 21 and supervisor



**LIFE JACKETS
 SAVE LIVES**
 ALWAYS WEAR A LIFE JACKET
 • WHEN BOATING ALONE
 • IF YOU'RE A WEAK SWIMMER
 • AT NIGHT
 • AT THE FIRST SIGN OF
 • BAD WEATHER
 • IN ANY EMERGENCY



A boat licence
 is required to operate
 a recreational power
 boat in Victoria - a PWC
 operate a PWC
 endorsement is required to



Stay with your boat
 if stranded on the water



Fully charge your boat's
batteries
 as well as those for
 hand-held marine radios
 and mobile phones



Properly maintain
 your vessel, engine and
 safety equipment



Inform
 a relative / friend /
 responsible person of
 where you are going and
 when you plan to return



weather report
 - know your limitations
 and those of your boat



Ensure you have the correct
sufficient fuel
 and reserve fuel



Maintain a
good lookout
 and operate at a
safe speed



10 BOATING SAFETY TIPS

For Boating/Fishing

- 1 All safety equipment to be in good condition and easily accessible.
- 2 Check the weather.
- 3 Tell someone where you are going, and when you intend to return.
- 4 Don't go boating alone.
- 5 Keep a good lookout.
- 6 Don't overload your boat with either people or gear.
- 7 Don't anchor in channels.
- 8 Carry adequate fuel.
- 9 Display an anchor light when fishing at anchor at night.
- 10 Ensure your motor and electrics are well maintained.

LAKE EPPALOCK LOCAL BOATING RULES

- 1 Boats containing sleeping accommodation and/or toilets are prohibited on Lake Eppalock.
 - 2 Parra-sailing is prohibited without prior written authority consent.
 - 3 Vessel Operating and Zoning Rules for *water levels 179.999 AHD (17.4% Capacity) or less* – as measured at the head gauge board located on the outlet tower in Tower Bay.
- All waters of Lake Eppalock are zoned 5 knots with the exception of Tower Bay which remains prohibited to all vessels.

LAKE EPPALOCK BY LAWS

- 1 Rubbish must be placed in receptacles provided.
- 2 Camping is prohibited at Lake Eppalock unless in a designated caravan park or club site;
- 3 Camp fires are prohibited on the foreshore;
- 4 Cutting, felling, damaging or removal of timber is prohibited;
- 5 Motorbikes must be registered with licensed riders and must only operate on designated roads.

LAKE EPPALOCK WARNINGS

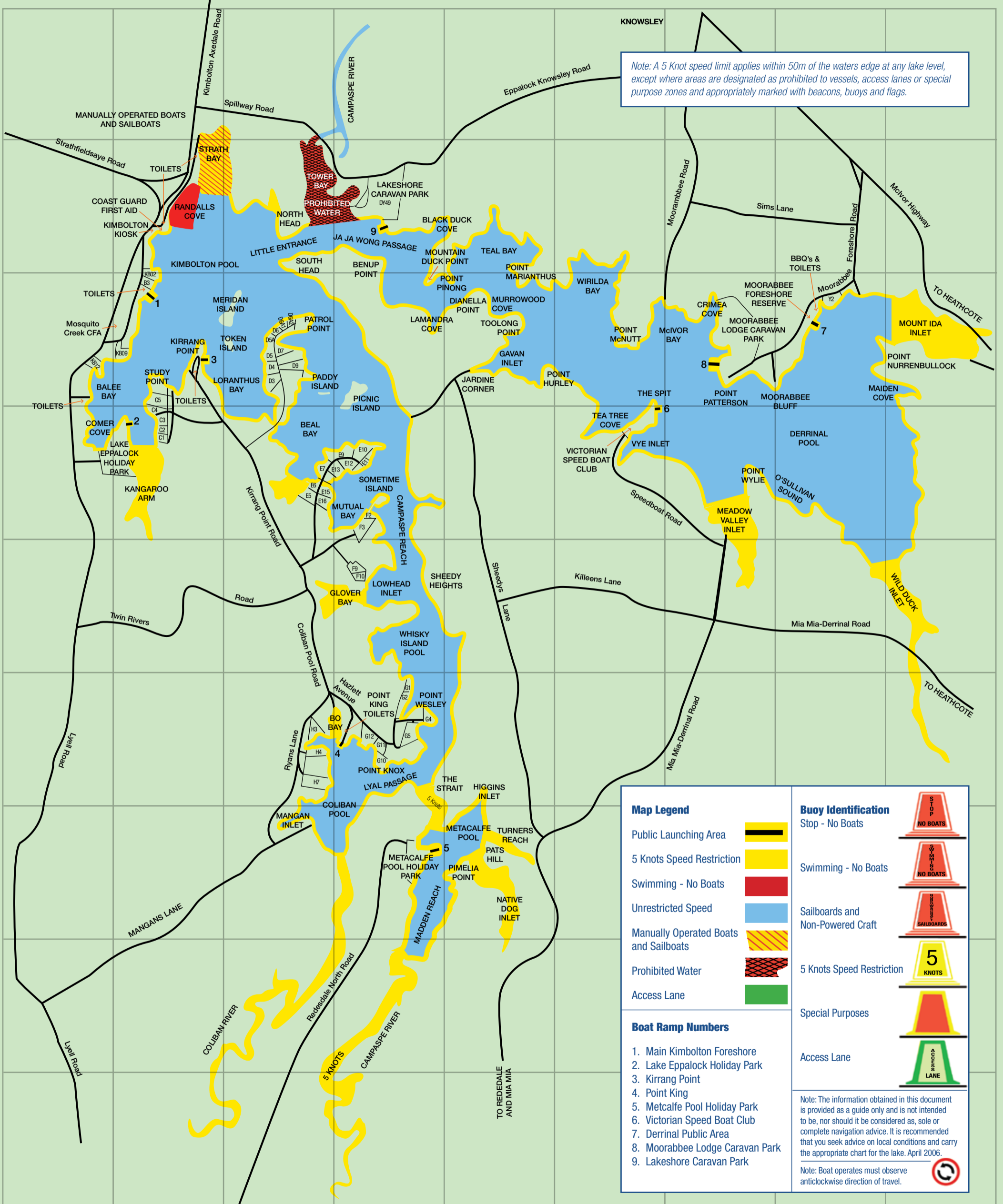
- 1 Danger - Water levels and boating conditions at Lake Eppalock may vary from day to day. Standing timber and submerged landforms exist within this storage and be hazardous to boating.
- 2 Power lines traverse Lake Eppalock in a number of locations and may be hazardous to boating.
- 3 Algae can be present in Lake Eppalock
- 4 Water in Lake Eppalock is not for potable use!!

LAKE EPPALOCK BOATING GUIDE



LAKE EPPALOCK

LAKE LEVELS 180.0M AHD AND ABOVE



Note: A 5 Knot speed limit applies within 50m of the waters edge at any lake level, except where areas are designated as prohibited to vessels, access lanes or special purpose zones and appropriately marked with beacons, buoys and flags.

Map Legend		Buoy Identification	
Public Launching Area		Stop - No Boats	
5 Knots Speed Restriction		Swimming - No Boats	
Swimming - No Boats		Sailboards and Non-Powered Craft	
Unrestricted Speed		5 Knots Speed Restriction	
Manually Operated Boats and Sailboats		Special Purposes	
Prohibited Water		Access Lane	
Access Lane			
Boat Ramp Numbers		<p>Note: The information obtained in this document is provided as a guide only and is not intended to be, nor should it be considered as, sole or complete navigation advice. It is recommended that you seek advice on local conditions and carry the appropriate chart for the lake. April 2006.</p> <p>Note: Boat operators must observe anticlockwise direction of travel.</p>	
<ol style="list-style-type: none"> 1. Main Kimbolton Foreshore 2. Lake Eppalock Holiday Park 3. Kirrang Point 4. Point King 5. Metcalfe Pool Holiday Park 6. Victorian Speed Boat Club 7. Derrinal Public Area 8. Moorabbee Lodge Caravan Park 9. Lakeshore Caravan Park 			

AREA	CLUB LESSEES	COMMERCIAL LESSEES	EMERGENCY SERVICES
C1	Northern Water Sports & Recreation Club	Kyneton Social Club	B1 Australian Volunteer Coastguard Association
C2	Yumbunga (Recreation Camps Australian)	Beal Bay Social Club	B8A Mosquito Creek Fire Brigade
C3	Ins & Outs Boat Club	Australian Postal Institute (A.P.I)	
C4	Power House Aqua Club	Mutual Club	
C5	Harodat Water Ski Club	Eppalock Social Club	
D3	Loranthus Club	Commodore Angling & Boat Club	
D4	United Families Social Club	Killeen Water Ski Club	
D5	Navel Reserve Cadet Unit TS Bendigo	Henlor Water Sports & Recreation Club	
D5A/D6	Koolamurt Scout Camp	Pax Social Club	
D6A1/D6A2	Werribee Water Ski Club	Lowhead Road Fishing Club	
D7	Western Ski Club	Macleod Technical School (Camp MacLeod)	
D9	KBM Ski Sports Club	Windsor Cricket & Tennis Water Ski Club (W.C.T.W.S.C.)	
		Wesley Point Camp 1 & 2	
		G10	Parade College Fathers (Camp Yarangabee)
		G11 & G12	Trinity Grammar School
		H3	Altona Power Boat Club
		H4	Coliban Water Sports Club
		KB02	Bendigo Yacht Club
		KB09	Bendigo Power Boat
		Y2	Altona Water Sports Club
		DY01	Moorabbee Caravan Park
		DY49	Lakeshore Caravan Park
		KA2	Kimbolton Kiosk
		KB14	Lake Eppalock Holiday Park
		MY76	Metcalfe Pool Holiday Park
			OPERATIONAL LEVELS
			No 1 (Main Kimbolton Foreshore) - 100% to 13.7% Capacity
			No 3 (Kirrang Point) - 100% to 38.4% Capacity
			No 4 (Point King) - 100% to 68.0% Capacity
			No 7 (Moorabbee Foreshore Reserve) - 100% to 46.0% Capacity
			EMERGENCY PHONE NUMBERS
			AMBULANCE, FIRE, POLICE
			ANYTIME, DAY OR NIGHT. 24 HOUR SERVICES.
			EMERGENCY FROM MOBILE PHONES 112