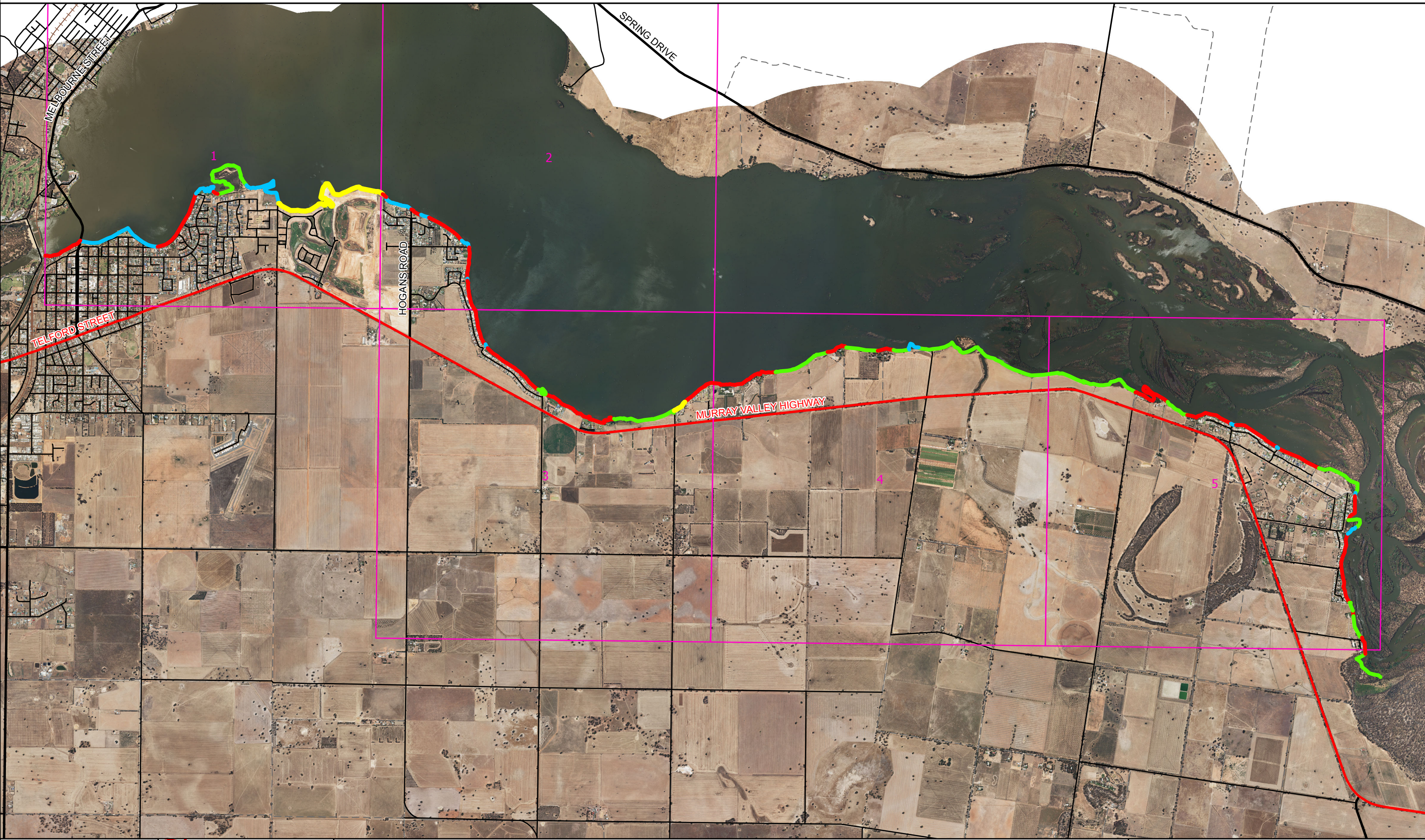
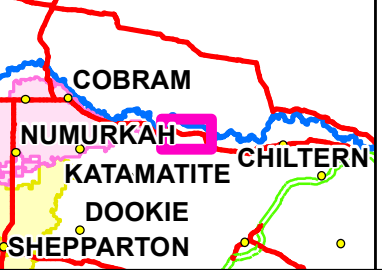


# Lake Mulwala - Mooring and Jetty Plan

GOULBURN-MURRAY WATER

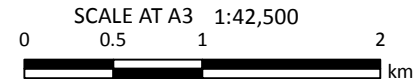


**GOULBURN-MURRAY WATER**  
IR31514  
10/04/2014  
GOULBURN-MURRAY WATER  
40 CASEY STREET (PO BOX 165)  
TATURA VIC 3616  
Ph (03) 5833 5500 Fax (03) 58245827  
gissupport@g-mwater.com.au



## Legend

- |                    |                             |         |                 |            |         |
|--------------------|-----------------------------|---------|-----------------|------------|---------|
| Commercial Zone    | Private Infrastructure Zone | Freeway | Major Road      | Minor Road | 4WD     |
| Environmental Zone | Public Use Zone             | Highway | Semi-Major Road | 2WD        | Railway |



The content of this product is provided for information purposes only. No claim is made as to the accuracy of authenticity of the content of the product. In no event will G-MW, its agents, instrumentalities and employees be liable for the accuracy of the information contained within this product nor its use of reliance placed on it. The information used within this product is provided on the basis that all persons accessing the information undertake responsibility for assessing the relevance and accuracy of its content.