

Lake Eppalock

Recreation Guide



Welcome to Lake Eppalock

Lake Eppalock, in the heart of the Goldfields, is central Victoria's largest water storage.

It has excellent facilities for day visitors and holiday makers with four caravan parks, several picnic areas with electric barbecues and a kiosk.

Lake Eppalock is just twenty minutes drive from Heathcote, thirty minutes from the thriving city of Bendigo and ninety minutes from Melbourne.



Did you know?

Lake Eppalock was completed in 1964. Its curved embankment is over 700 metres long, stands 47 metres high and contains more than 800,000 cubic metres of earth and rock.

Like to know more about Lake Eppalock?
Visit us at www.g-mwater.com.au

GMW & Dams

Lake Eppalock is just one of GMW's 16 water storages scattered across a region the size of Tasmania.

GMW is not only responsible for dams - it also looks after boating and recreational activities on and around the water: GMW is also a large land manager and the largest inland boating authority in Victoria!

As part of managing these responsibilities, GMW develops a Land and On-Water Management Plan for each storage - including Lake Eppalock. The Plans focus on what people value and enjoy about GMW's water storages - from boat ramps to picnic tables, water sports to wildlife habitat.

To find out more about the Lake Eppalock Land and On-Water Management Plan visit:
www.g-mwater.com.au/storages

Dam Operations

When full, Lake Eppalock holds 304,651 megalitres and in places is over 30 metres deep.

GMW controls 82% and Coliban Water controls 18% of the water in Lake Eppalock.

As well as supplying raw water for urban treatment, Lake Eppalock also stores water for irrigation along the Campaspe River downstream.

Water from Lake Eppalock is used to supplement the Waranga Western Channel that supplies the Rochester and Pyramid-Boort irrigation areas.

Lake Eppalock has three spillways to control water releases and flows - two concrete ogee crest spillways and one earthen spillway.

Fishing



Lake Eppalock is home to a healthy mix of Golden Perch, Redfin, Murray Cod and Trout and has a good balance of deep and shallow water.

The Lake provides excellent fishing for Redfin (especially between December and May) with Derrinal and Kimbolton pools to the north being popular fishing spots.

Also try the mouth of the Coliban and Campaspe Rivers for Murray Cod and Golden Perch.

For the latest information on fishing at Lake Eppalock contact DEPI.

Boating



Lake Eppalock is the “sailing centre of Central Victoria” and the Bendigo Yacht Club holds regular events.

The Lake is also a popular destination for waterskiing and power boat racing.

A number of public boat ramps are located around the Lake. See the *Boating Map overleaf* for locations.

Normal boating operations apply when water levels are above 180 m AHD. Low water level hazards include submerged tree stumps and shallow water. Check signage at boat ramps for further information.

Lake Eppalock is
the 7th largest lake
in Victoria.


GMW is
Australia's largest
rural water corporation
managing around 70% of
Victoria's stored water
resources.

Relax & Unwind...

Lake Eppalock is a water playground for all ages. This family-friendly destination offers peaceful areas for bushwalking, birdwatching, fishing and sailing. For the more adventurous, power boat racing and waterskiing are popular sporting activities. A number of club sites are located around the Lake offering private accommodation and other facilities for members.

Accommodation:

Lakeside caravan and holiday parks, B&Bs and holiday houses are available all year round. For more information contact the Bendigo Visitor Information Centre on 1800 813 153 or visit www.bendigotourism.com

A man in a purple life vest is waterskiing on a lake. He is leaning forward, holding a blue tow rope. The water is splashing around him. In the background, there are green hills under a clear blue sky. The image is overlaid with decorative blue wavy patterns.

*Coliban River,
Campaspe River,
Wild Duck Creek
and Mt Ida/Mclvor
Creek run into Lake
Eppalock.*

Who should I contact about...

Emergencies:

Police, Fire, Ambulance
000

Weather reports:

Bureau of Meteorology
www.bom.gov.au

Fishing information:

Department of
Environment and Primary
Industries 136 186

Please refer to the Victorian
Recreational Fishing Guide
available at
www.depi.vic.gov.au/fisheries

Boating information:

Transport Safety Victoria
1800 223 022

Please refer to the Victorian
Recreational Boating Safety
Handbook available at www.transportsafety.vic.gov.au

Stay
informed

Subscribe to free updates on
www.g-mwater.com.au/subscribe

Environmental information:

EPA Victoria
1300 372 842
www.epa.vic.gov.au

Parks Victoria
131 963
www.parks.vic.gov.au

GMW storages are open and easily accessible to the general public. They provide wonderful recreation opportunities, however their primary purpose is for storage and delivery of irrigation water to GMW customers. Water levels vary over the irrigation season, rising with rainfall and falling as water is released for delivery.



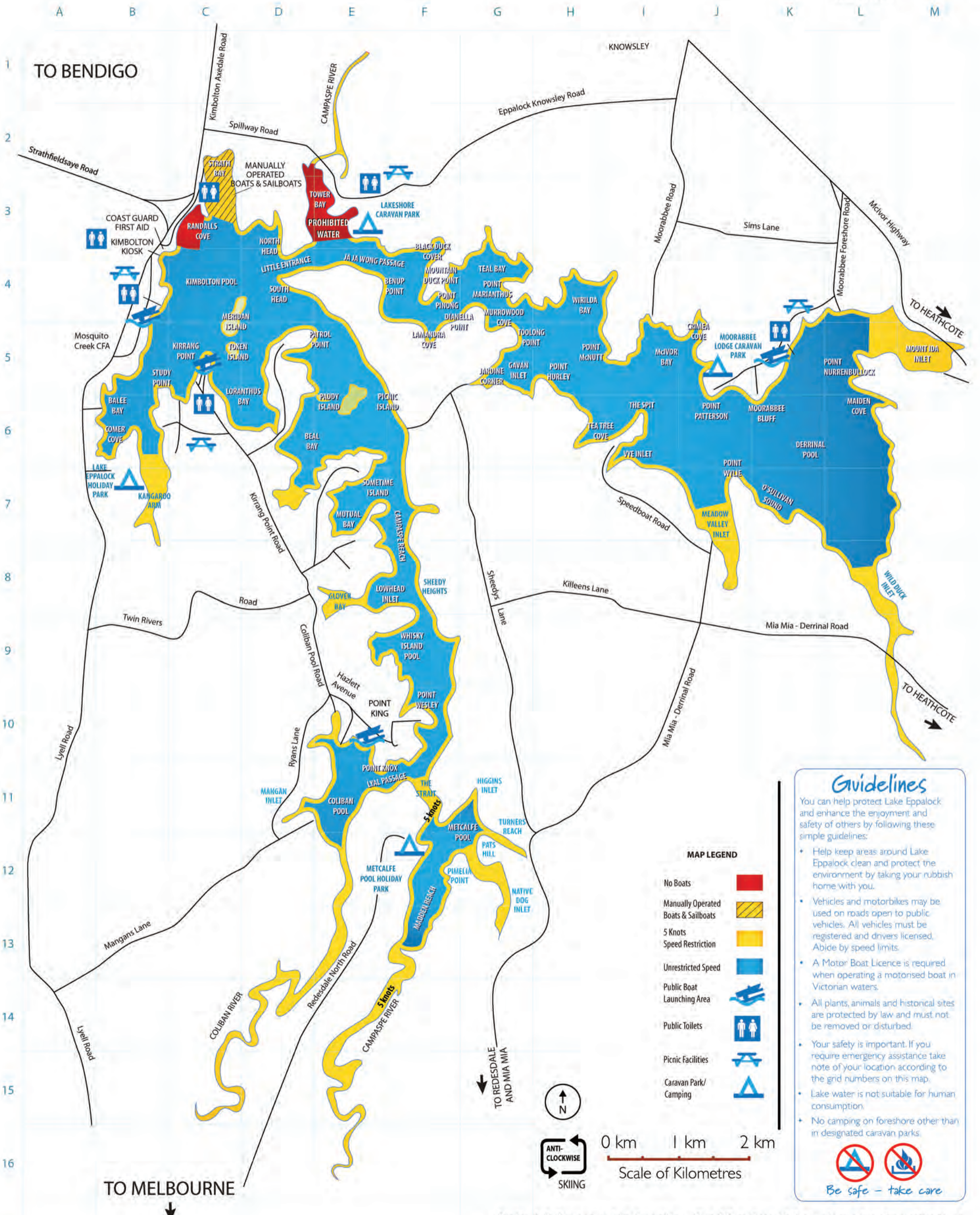
Goulburn-Murray Water
PO Box 165
Tatura Vic 3616

Tel 1800 013 357
www.g-mwater.com.au

Copyright GMW. All rights reserved. Updated November 2013.

Lake Eppalock Boating & Facilities Map

Boats containing sleeping accommodation and/or toilets are prohibited on Lake Eppalock. Parasailing is prohibited without prior written consent by GMW.



Guidelines

You can help protect Lake Eppalock and enhance the enjoyment and safety of others by following these simple guidelines:

- Help keep areas around Lake Eppalock clean and protect the environment by taking your rubbish home with you.
- Vehicles and motorbikes may be used on roads open to public vehicles. All vehicles must be registered and drivers licensed. Abide by speed limits.
- A Motor Boat Licence is required when operating a motorised boat in Victorian waters.
- All plants, animals and historical sites are protected by law and must not be removed or disturbed.
- Your safety is important. If you require emergency assistance take note of your location according to the grid numbers on this map.
- Lake water is not suitable for human consumption.
- No camping on foreshore other than in designated caravan parks.

Be safe - take care

Note: A 5 Knot speed limit applies within 50 metres of the waters edge at any lake level, except where areas are designated as prohibited to vessels, access lanes or special purpose zones and appropriately marked with beacons, buoys and flags. At low storage levels below 180 m AHD a 5 knot speed limit applies to the whole storage.