

Lake Eppalock Recreational Area Management Plan

August 2025



Contents

Acknowledgement to Country	3
About Goulburn-Murray Water (GMW)	4
Introduction	5
Recreational Area Management Plans	5
About Lake Eppalock	7
Objectives of the plan	8
Consultation	9
Location	12
Facilities available	12
Recreational activities	13
Set aside areas	18
Register of set aside areas	20
Prohibited areas	22
Temporary closures	22
Events and permits	23
Land and development opportunities	24
Occupation Licences	24
Compliance and enforcement	24
Operations and maintenance	25
Water quality management	26
Implementation plan	28

Tables

Table 1	GMW Recreational Area Activities	13
Table 2	Set aside areas	20
Table 3	Implementation plan	28

Cover Image Credit: Penny Ryan

Acknowledgement to Country

Goulburn-Murray Water recognises Aboriginal and Torres Strait Islander peoples as the First Peoples of Australia and the proud representatives of the world's oldest, living culture.

We respectfully acknowledge Elders past, present and emerging as the Traditional Custodians of the land and waters and the rich cultural connections First Peoples have across our region.

We commit to building meaningful partnerships that create value for Traditional Owners and Aboriginal communities through genuine engagement and collaboration.

We recognise the Dja Dja Wurrung Clans Aboriginal Corporation and the Taungurung Land and Waters Council as the Registered Aboriginal Parties within the Lake Eppalock region and acknowledge their rights as the Traditional Owners of land and waters, as outlined in their Agreements with the State of Victoria.

About Goulburn-Murray Water (GMW)

GMW is Australia's largest rural water provider, managing the storage, delivery and drainage systems for 70 per cent of Victoria's stored water resources, 50 per cent of Victoria's underground water supplies and 35 per cent of Victoria's unregulated water resources.

GMW services a region of 68,000 square kilometres, bordered by the Great Dividing Range to the south, the River Murray to the north and stretching from Corryong in the east to Nyah in the west.

Recreational areas managed by GMW are popular destinations for Victorian and interstate visitors to connect with water and the natural environment, and to undertake a variety of recreational activities. Since 2021, an average of almost 2.5 million people visit determined recreational areas managed by GMW each year.

GMW plays a crucial role in managing recreational areas at Lake Eppalock. The development of the Lake Eppalock Recreational Area Management Plan (the plan) aims to balance the needs of GMW customers, the environment and recreational opportunities.

Introduction

The purpose of the Lake Eppalock Recreational Area Management Plan (the plan) is to provide clear operational guidelines for managing recreational activities at Lake Eppalock while minimising impacts on water quality, the environment, cultural heritage values, and GMW assets and operations.

The plan provides a comprehensive and practical framework for GMW to manage recreational activities at Lake Eppalock in a way that aims to protect the natural environment, maintain water quality, provide opportunity for Cultural Practices for First Nations People, and support the safe enjoyment by visitors.

Key values referenced in the development of the plan include:

- Environmental protection
- Recreational opportunities
- Cultural heritage
- Economic benefits, and
- Community engagement.

The plan details permitted recreational activities, management objectives, designated set-aside areas to balance use and conservation, and highlights the variety of stakeholders involved in the management of Lake Eppalock. It references the Department of Energy, Environment and Climate Action's (DEECA) guidance materials to ensure sustainable use and the protection of water resources.

Recreational Area Management Plans

The *Water (Recreational Area) Regulations 2023* (the regulations) apply to approximately 40 water storages across Victoria. These storages have been determined as recreational areas by the Minister for Water in accordance with section 122ZA of the *Water Act 1989*.

The regulations provide for the control, management and use of recreational areas, and provide infringement offences and penalties. These infringement penalties were not available in the superseded Model By-Law: Recreational Areas 2012. The regulations came into operation in August 2023, replacing GMW's Recreational Area By-Law. A key feature of the regulations is the requirement for water corporations to develop management plans for recreational areas under their jurisdiction.

The plan explains how Lake Eppalock's public recreation areas are operationally managed under the *Water (Recreational Area) Regulations 2023*. While it is not a strategic planning document, GMW supports and partners with agencies, councils, First Nations People and groups, and community

groups on projects that support health, wellbeing and liveability, boost tourism and contribute to regional economic growth through improved recreational opportunities.

Water corporations are legally obligated to uphold commitments outlined under the *Traditional Owner Settlement Act 2010* and the *Native Title Act 1993*. These obligations include actively working in partnership with the relevant First Nations groups to ensure culturally appropriate and equitable outcomes.

This plan acknowledges and values Traditional Cultural ways of knowing, being, and decision-making that lie outside Western governance frameworks, and affirms Cultural Lore and protocols of the Dja Dja Wurrung Clans Aboriginal Corporation (DJAARA) and Taungurung Land and Waters Council.

For further information on the *Water (Recreational Area) Regulations 2023* visit:

www.water.vic.gov.au/our-programs/recreational-values-of-victorias-water/recreational-area-regulations

In addition to the regulations, GMW manages the recreational use of this storage in accordance with:

- *Water Act 1989*
- *Marine Safety Act 2010*
- *Safe Drinking Water Act 2003*.

The plan serves as a guiding operational document for GMW, local communities, and stakeholders in managing recreational activities at Lake Eppalock. It provides clear guidelines and actions to enable the sustainable use of Lake Eppalock recreational areas while protecting its natural and cultural values.

It is intended to be a living document, to be reviewed and updated when appropriate based on the monitoring of recreational activities and in consultation with key stakeholders.

Monitoring and evaluation

The plan will be reviewed every 10 years, or sooner as needed, to assess its effectiveness and make necessary adjustments. This review process will involve:

- Engagement of relevant First Nations groups and an open feedback process based on the principles of self-determination
- Monitoring and evaluation: regularly monitoring the impact of recreational activities on the environment and water quality
- Regulatory compliance: ensuring compliance with DEECA's guidelines and other relevant regulations
- Community feedback: gathering input from local residents, recreational users, local government authorities, special interest groups and other key stakeholders.

About Lake Eppalock

Lake Eppalock is situated on the traditional lands of the Dja Dja Wurrung and Taungurung peoples on the Campaspe River in central Victoria. It is approximately 20 minutes drive from Heathcote, 30 minutes from Bendigo and 90 minutes north west of Melbourne.

The Box Ironbark Forest and Dry Forest that surrounds Lake Eppalock are distinctive to central Victoria providing an important habitat for native species. They also help to protect water quality and stabilise the lake foreshore.

The lake covers over 3,000 hectares and is the largest water storage in central Victoria.

Construction of Lake Eppalock commenced in 1960 and was completed in 1964. In 1962 the State Rivers and Water Supply Commission (now known as Goulburn-Murray Water) agreed to proposals for the development of recreational facilities on the marginal land around the lake.

The lake supplies irrigation, environmental and stock and domestic water to entitlement holders as far north as Echuca as well as providing urban supplies to Bendigo, Heathcote and other central Victorian towns. These townships are popular destinations for visitors to the region, many of whom are frequent visitors to the lake.

Lake Eppalock is one of the most popular recreational inland waterways in Victoria and is frequently visited for activities including waterskiing, fishing and boating. Walking and cycling along the O'Keefe Rail Trail is also a popular recreational activity. The lake provides numerous health and wellbeing benefits to the community and helps to foster social connections by providing a space for family and friends to spend quality time together.

Public areas provide facilities for day visitors including toilets, boat ramps and picnic and barbecue facilities. Additionally, there are approximately 35 sites around the perimeter of Lake Eppalock occupied under leases of up to 30 years. Leases are held by 31 recreational clubs, four caravan parks and the Country Fire Authority. Public access may be restricted, or conditions applied in areas that are under an occupation agreement subject to the terms of that agreement.

Objectives of the plan

The objectives of this management plan for recreational areas at Lake Eppalock are to:

- Protect the land, services and facilities in the area
- Protect and maintain water quality in waterways in the area
- Conserve and preserve flora, fauna and habitat in the area, including the biodiversity of that flora, fauna and habitat
- Protect the health and safety of visitors to the area
- Promote the enjoyment and recreation of visitors to the area
- Continue the ongoing enjoyment of Lake Eppalock by ensuring leases and licences for caravan parks, marinas, clubs and other appropriate organisations delivering recreational facilities to the community are maintained and reviewed regularly
- Protect and promote Aboriginal cultural heritage and Aboriginal intangible heritage in the area
- Protect and promote any other heritage features in the area
- Facilitate the participation of relevant First Nations groups in the management of that area, including in accordance with any agreements under the *Traditional Owner Settlement Act 2010* that apply to the area
- Ensure that the area is managed and used in a way that respects and upholds the rights and aspirations of First Nations groups who have a connection to the area.

Consultation

The Lake Eppalock Recreational Area Management Plan has been developed to align with the guidance provided by DEECA in accordance with the regulations. A formalised consultation and engagement framework was imbedded in the development of the plan.

The following consultation activities were undertaken in 2024/25 to support the development of the plan:

- Consultation opportunities were promoted widely, including via GMW social media posts, media releases, the GMW website and targeted mailing lists to notify stakeholders and encourage participation and feedback on the draft Lake Eppalock plan.
- Interviews with partner agencies including City of Greater Bendigo, North Central Catchment Management Authority, Victorian Fisheries Authority, and Better Boating Victoria
- Traditional Owner consultation that was determined in partnership with representatives of DJAARA (Dja Dja Wurrung Clans Aboriginal Corporation) and the Taungurung Land and Waters Council as the Registered Aboriginal Parties (RAPs)
- Feedback was encouraged via GMW's dedicated online engagement portal yoursay@gmw. Opportunities to provide input to the draft plans included a values-based questionnaire and the ability to download and comment on the draft plans
- A summary of the feedback received was published on GMW's yoursay@gmw portal, highlighting the key themes and how this feedback has been incorporated into the plans.

What we heard

GMW engaged through face-to-face gatherings, one-on-one discussions and an online survey to understand people's connections to the land and water, personal experiences, and what they valued most about accessing Lake Eppalock for recreational purposes.

We worked closely with DJAARA through on-Country days and workshops, and have also been working closely with Taungurung Land and Waters Council on the Corop Wetlands Cultural Waterscape Project. These open dialogue and knowledge exchange opportunities identified and supported the inclusion of Traditional Owner values, priorities and aspirations in the management of the Lake Eppalock recreational areas.

The consultation highlighted that Lake Eppalock is hugely important to the local community and provides a wide range of cultural, lifestyle, health, environmental and economic benefits and contributes to the community's sense of place.

It provides an opportunity to connect to Country and draws visitors year-round. It was acknowledged that at times this results in surges in population especially on weekends. It contributes significantly to the regional economy and serves as a multi-generational recreation destination.

Key value themes include:

- **Strengthening Social Bonds:** Spending time with family and friends (and in many cases with dogs), sharing experiences across generations, and celebrating family events fosters strong social connections. These activities help build a sense of community, reduce feelings of isolation, and create a supportive network.
- **Promoting Lifelong Learning:** Learning new skills and teaching the next generation encourages personal growth and development. This benefits individuals and enriches the community by fostering a culture of knowledge sharing and continuous improvement.
- **Enhancing Mental Health:** Quality time spent relaxing and escaping day-to-day pressures helps reduce stress and anxiety. Recreational activities provide a much-needed break from routine, contributing to improved mental health and overall wellbeing.
- **Preserving Cultural Heritage:** Participating in Cultural traditions and celebrating heritage strengthens Cultural identity and pride. It can support diversity and understanding within the community, fostering a more inclusive environment.
- **Encouraging Physical Activity:** Engaging in outdoor activities like walking, cycling, and water sports promotes physical health. Regular physical activity contributes to maintaining a healthy lifestyle and preventing chronic diseases.
- **Fostering a Connection to Nature:** Getting back to nature and basics helps individuals appreciate and protect the environment. This connection can lead to more sustainable practices and a greater sense of environmental awareness in the community.
- **Creating Lasting Memories:** Making memories through shared experiences enhances the quality of life. These memories contribute to a sense of belonging and continuity, enriching the community's collective history.
- **Supporting Local Economy:** Recreational activities attract visitors and boost local businesses, contributing to the local economy.

Key themes from engagement with DJAARA include:

- **Cultural Recognition & Rights:** Emphasising Djaara desire for self-determination, cultural heritage protection, and participation in land and water management
- **Infrastructure & Design:** Recommending culturally inclusive signage, facilities, and access improvements
- **Environmental Stewardship:** Advocating for the restoration of native vegetation, management of erosion, and improvements to biodiversity
- **Education & Engagement:** Proposing cultural competency training, public education, and DJAARA led tourism and monitoring programs
- **Collaborative Governance:** To encourage ongoing partnerships between GMW, DJAARA, and other stakeholders for joint decision-making and progressing the Dhelkunya Dja Country Plan and Dhelkunyangu Gatjin (water) strategy.

Key themes from engagement with Taungurung include:

Lake Eppalock holds high importance to Taungurung Land and Waters Council. The Taungurung *Buk Dadbagi* (Country Plan) has been referenced in the development of this plan. It identifies the following values, priorities and aspirations:

- *Biik-nganjin dadbagi* – Caring for Country
- *Daanboor mon* – Health and wellbeing
- *Ngerren, ngarrnga ning ning guding* – Identity, recognition and rights
- *Ngj-agat munga* – Economic development and employment
- *Taungurung yulendj* – Taungurung traditional knowledge
- *Yulendj* – Cultural heritage.

A review of the plan can be initiated by the RAPs at any time under the regulations.

Location

Lake Eppalock is situated on the traditional lands of the Dja Dja Wurrung and Taungurung people on the Campaspe River in central Victoria.

It is approximately 20 minutes drive from Heathcote, 30 minutes from Bendigo and 90 minutes north west of Melbourne. The lake covers over 3,000 hectares and is the largest water storage in central Victoria.



Figure 1 Lake Eppalock location map

Facilities available

The following facilities are available at Lake Eppalock, with locations shown on the map at Figure 3.

-  **Public launching area**
-  **Camping**
-  **Public toilet**
-  **Accessible facilities**
-  **Picnic facilities**

Figure 2 Facilities

For more information on recreational activities and facilities, please observe all signs and directions at GMW's storages and visit the GMW website at:

www.gmwater.com.au/water-operations/storages/campaspe/lakeeppalock

For information on all ability facilities, please refer to the GMW website at:

www.gmwater.com.au/recreation/all-ability-facilities

Recreational activities

Public recreational areas managed by GMW are popular places for visitors to connect with water and the natural environment, and to undertake a variety of recreational activities. GMW places the highest priority on safety at the storages we manage.

The below table summarises the activities permitted at Lake Eppalock, any conditions that apply and links for further information.

Table 1 GMW Recreational Area Activities

Activity	Permitted ✓ or Prohibited X	Notes
Fishing	✓	Permits, bag limits and seasonal restrictions apply. For more information visit www.vfa.vic.gov.au
Boating	✓	Speed and safety restrictions, and zones must be adhered to. Other restrictions may apply. Visit Rules And Exclusion Zones Safe Transport Victoria for more information.
Water skiing	✓	For licence and registration requirements see Marine licence : VicRoads . Vehicles are permitted to access low level boat ramps below the full supply level via existing formed tracks, with vehicle and trailer parking permitted around the boat ramp.
Houseboats	X	Houseboats are not permitted on Lake Eppalock.
Canoeing/ kayaking	✓	Safety requirements, including capacity limits must be adhered to.
Walking and cycling	✓	The O'Keefe Rail Trail runs to the north east of Lake Eppalock.
Camping/ caravanning	✓*	*Camping/caravanning is available in caravan parks only. Camping/caravanning is prohibited in GMW public recreation areas, foreshore or lakebed areas
Campfires	X	Campfires are not permitted in GMW public recreation areas, foreshore or lakebed areas. No wood collection is permitted within GMW public recreation areas, foreshore or lakebed areas.
Picnic & barbequing	✓*	*No wood fire BBQs are to be lit. On declared days of Total Fire Ban all solid fuel campfires, portable gas appliances and kerosene lanterns are prohibited. Electric barbecues are available at some locations.
Dogs	✓	Dogs must be on a lead or under effective control at all times. Please clean up after your pets. Handlers are to be aware of Blue-green Algae and the risk to skin/health - water access should be managed accordingly. GMW will review localised access if issues arise.
Drone flights	X*	*Conditional - permits can be obtained, please contact GMW for more information. Drone safety rules must be adhered to. For more information visit www.casa.gov.au

Activity	Permitted ✓ or Prohibited X	Notes
Bathing/ washing	X	Cleaning agents such as soap, shampoo, conditioner, toothpaste or detergent are not to be used in or near the lake.
Vehicles and trailbikes	X*	<p>Vehicles and trail bikes are only allowed on public roads above full supply level within the recreation areas and are not permitted on the exposed areas of the shores or the lakebed. All vehicles must be roadworthy, registered and users must be licensed. Road rules must be obeyed at all times.</p> <p>*To ensure ongoing recreational access, vehicles are permitted beneath the full supply level - via existing formed roadways - at Randalls Cove, Strath Bay and Kirrang Point only.</p>
Hunting	✓*	<p>Appropriate permits and licences are required and MUST be carried – for more information visit www.gma.vic.gov.au</p> <p>Full retrieval and removal of carcasses is required.</p> <p>Dogs are permitted for use when hunting in accordance with the <i>Wildlife Act 1975</i>.</p> <p>*Seasonal restrictions (including locations) apply.</p>
Prospecting, fossicking or digging	X*	*The removal of rocks, material or vegetation is prohibited within GMW public recreation areas. Permits may be obtained under certain circumstances, please contact GMW for more information.
Events	✓*	<p>*An events permit may be required. For more information, please see the 'Events and Permits' section or visit www.g-mwater.com.au/recreation/event-permits</p>

Caring for the Lake Eppalock environment

Lake Eppalock is a beautiful natural resource. To help care for the lake so that it can be enjoyed now and into the future, visitors are requested to follow a few simple steps:

- Take out your rubbish. The dumping of rubbish is prohibited and penalties apply, please take all your rubbish with you when you leave. Please consider the environment when disposing of litter. For nearby transfer stations refer to:

www.bendigo.vic.gov.au/residents/general-waste-recycling-and-organics

- Don't interfere with animals or their habitats, and don't feed them
- Keep to 5 knots within 50 m of shore as boat wash can cause erosion (even in higher speed zones)
- Keep the waterway healthy by not using cleaning agents such as soap, toothpaste, shampoo, conditioner or detergent in or near the lake. They break the surface tension of the water, which reduces the oxygen levels in the water, causing harm to fish and other forms of aquatic life.
- Protect the biodiversity at Lake Eppalock. The removal of flora or fauna from GMW's public recreation areas is prohibited. Don't remove or bring in any vegetation (including harvesting of wood).

Water safety

GMW places the highest priority on safety at the storages we manage. Ensuring personal safety and adhering to posted guidance can help prevent accidents and ensure a safer experience for everyone.

Water safety messages are communicated via GMW's Water Smarts campaign and are distributed via social media, in print at the recreational areas we manage and on the GMW website.

Key themes are aimed at educating recreational users and reducing risk taking behaviours and include:

- Speed
- Lifejackets
- Boating alone
- Checking conditions
- Hazard awareness
- Consumption of alcohol, and
- Diving.

Swimming

GMW storages are not patrolled by lifeguards nor contain rescue equipment, therefore swimming is not recommended due to safety concerns.

However, it is recognised that some visitors may still engage in this activity. Visitors are encouraged to wear life jackets, not swim alone and should make themselves aware of the local dangers and risks, such as submerged objects, varying water depths and water temperature, before entering the water.

Boating safety

GMW is the Waterway Manager for Lake Eppalock under the *Marine Safety Act* 2010. When using the waterway, boaters need to be aware of the vessel operating and zoning rules, including supportive signage and buoyage in place. While in many instances there are state-wide rules in place, at many of GMW's storages there are also localised zoning rules that can vary depending on the type of watercraft being used or seasonal conditions such as water levels.

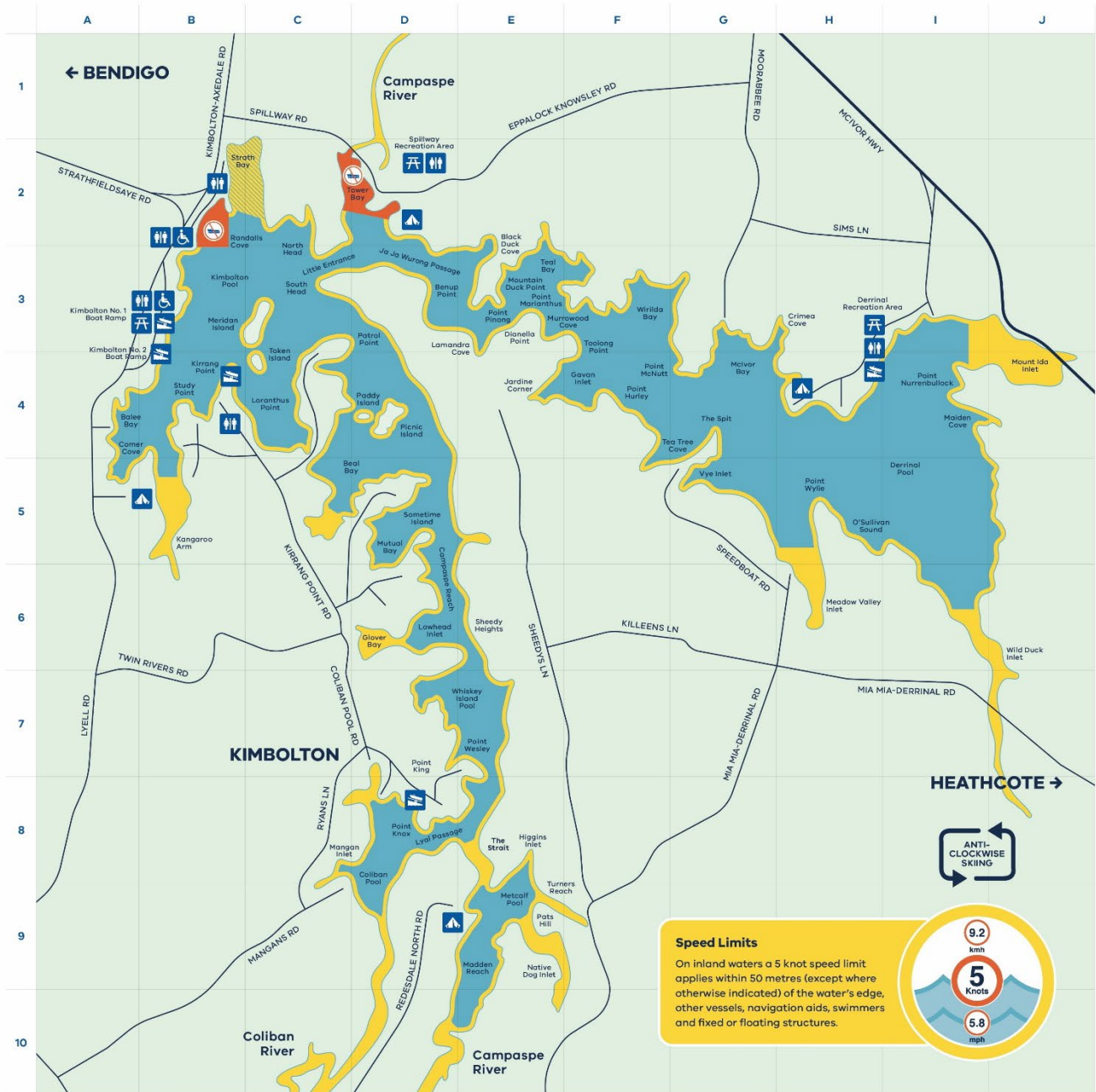
As Waterway Manager, while GMW is not required through the *Marine Safety Act* to undertake compliance activities associated with the Act, GMW is committed to providing a safe space for recreational users and will collect any relevant information and report any issues to Safe Transport Victoria for management through their compliance team. GMW also works closely with local police and other agencies to address any immediate concerns where appropriate.

For more information on the state-wide vessel operating and zoning rules, signage and buoyage types visit:

www.safetransport.vic.gov.au/on-the-water/using-waterways/rules-and-exclusion-zones/

For localised zoning information look for Boating Safety Information Signs located at public boat ramps or visit:

www.gmwater.com.au/water-operations/storages/campaspe/lakeeppalock



<p>Legend</p> <ul style="list-style-type: none"> No boats Non-powered boats only 5 knots speed restriction Unrestricted speed* Water hazard Public launching area Camping Public toilet Accessible facilities Picnic facilities Road <p>* Applies to lake levels 180m Australian Height Datum (mAHD) and above.</p> <p>No camping or fires are permitted on the GMW foreshore land, including lakebed areas.</p> <p>Campfires are only permitted in locations where designated infrastructure is provided and in line with Country Fire Authority (CFA) guidelines.</p>	<p>Boating Safety</p> <ol style="list-style-type: none"> Local requirements are posted on all public boat ramps. Boat ramps are for the launching and retrieval of vessels only. To avoid congestion, complete any preparation prior to launching, or when returning from the water, away from the ramp. Ensure all safety equipment is on the vessel and operational, and that lifejackets are worn when required. Always keep a lookout for waterway hazards and operate your vessel in line with weather and waterway conditions. Vehicles can access low-level boat ramps via existing formed tracks. Vehicle and trailer parking is only allowed in designated areas or immediately adjacent low water level boat ramps. Ensure no person is in or on the vessel when moving to and from the ramp. Shade structures aren't allowed within 50 metres of either side of boat ramps. Stay clear of dam infrastructure. 	<p>Speed Limits</p> <p>On inland waters a 5 knot speed limit applies within 50 metres (except where otherwise indicated) of the water's edge, other vessels, navigation aids, swimmers and fixed or floating structures.</p> <p>ANTI-CLOCKWISE SKING</p> <p>9.2 km/h 5 Knots 5.8 mph</p> <p>Current water level</p> <p>Disclaimer</p> <p>The content of this map is provided as a visual reference only. No claim is made as to the accuracy. Visitors to the recreational areas managed by GMW are reminded to always check weather, water and local area conditions prior to visiting.</p> <p>For more detailed information on the Vessel Operating and Zoning Rule visit: www.safetransport.vic.gov.au/on-the-water</p> <p>To check local conditions visit: www.emergency.vic.gov.au/prepare</p>
--	---	--

Hunting is prohibited on GMW owned and managed land. For seasonal duck hunting the Game Management Authority sets the associated guidelines and rules to ensure hunting is undertaken in a safe and sustainable way. See www.gma.vic.gov.au for specific regulations.

Figure 3 Lake Eppalock Recreation Area map

Managing Lake Eppalock Recreational Area



Image credit: Penny Ryan

Set aside areas

To accommodate the diverse range of recreational activities that occur at Lake Eppalock, GMW may use 'set aside areas' to enable flexible or tailored management of the area under the regulations while ensuring the health, safety and enjoyment of visitors.

The regulations outline that a set aside area may:

- Apply to the whole of the recreational area or a specified area
- Apply on specified days, times or periods
- Apply to a class of person, vehicle, vessel or aircraft
- Specify any conditions which must be carried out for certain activities.

Set aside areas enable the safe operation of the water storage, ensuring that water quality is maintained, on-water recreation can occur safely and that conflicting or complementary recreational activities are well managed. Set aside areas for Lake Eppalock are summarised in Table 2.

Occupation agreements for lease holders such as caravan parks, club sites or grazing licences may also have restrictions or conditions for public access subject to the terms of that agreement.

Publishing a determination of a set aside area

A determination of a set aside area will be published on the GMW website and there will also be signs and notices placed on-site.

It is an offence not to comply with the conditions of determinations in set aside areas. If GMW revokes or amends a set aside area, any previous sign or notice that has been displayed under the regulations must be removed or amended to reflect the revocation or amendment.

Signage for set aside areas

Signs or notices will:

- Be displayed in a manner that is likely to be seen by any person affected by the determination
- Indicate the area that is temporarily closed or set aside by the determination
- Where applicable, state the activities that are prohibited, restricted or permitted by the determination and any conditions specified in the determination.

Register of set aside areas

A record of the set aside areas at Lake Eppalock is outlined in Table 2.

Table 2 Set aside areas

Regulation		Basis	Purpose of set aside area	Set aside area	Times or periods
14 (1)(b)	Prohibited or restricted access	(r.30(1))	Prohibited access for public safety (operational area)	<ul style="list-style-type: none"> • Tower Bay prohibited area • GMW office and operations depot (Spillway Road) • Spillway embankment area • Spillway shute • GMW depot/compound (Sunset Drive, Kimbolton) • GMW residence (Sunset Drive, Kimbolton) • Coliban Water Pump Station and adjacent embankment including access to the Cone Dispersion Valve. 	Always
14 (2)(h)	Areas where dogs are permitted	(r. 56 (2))	Specify the area where dogs are allowed to enhance the enjoyment of the visitors to the recreational area	All areas excluding prohibited/restricted access areas	Always
14 (2)(d)	Areas for operating BBQs or fireplaces	(r. 43(3))	Specify an area where BBQs are permitted	Public BBQ areas, commercial caravan parks and commercial club sites.	Always
15 (2)(d)	Areas for operating BBQs or fireplaces	(r. 43(3))	Specify an area where fireplaces are permitted	At commercial caravan parks and commercial club sites.	Always
14 (2)(e)	Areas where campfires are permitted	(r.44(2))	Specify an area where campfires are permitted	At commercial caravan parks and commercial club sites, but not including foreshore or lakebed areas.	Always
14 (2) (i)	Area where horses are permitted	(r. 62(3))	Specify areas where horses are permitted	O'Keefe Rail Trail	Always

Regulation		Basis	Purpose of set aside area	Set aside area	Times or periods
14 (2) (j)	Areas where livestock is permitted	(r. 62(2))	Specify areas where livestock is permitted	Livestock is permitted in areas where a grazing licence is held.	Always
14 (2) (k)	Areas where fishing is prohibited	(r.72(2))	Specify area where fishing is prohibited	Tower Bay prohibited area	Always
14 (2) (l)	Areas where swimming is prohibited	(r.73(3))	Specify an area where swimming is prohibited	Tower Bay prohibited area and within 50 meters of operational boat ramps.	Always
14 (2) (m)	Areas where camping is permitted	(r.74(3))	Specify where camping is permitted	Commercial caravan parks and commercial club sites (within the terms of the lease agreements). Camping is not permitted on GMW public recreation land, foreshore and lakebed areas.	Always
14 (2) (p)	Areas where vehicles, vessels and aircraft are permitted	(r. 79(3))	Specify an area where vessels are permitted	All areas except Tower Bay prohibited area, and only manually operated vessels are permitted in the Randalls Cove manually operated zone.	Always
14 (2) (p)	Areas where vehicles, vessels and aircraft are permitted	(r. 79(3))	Specify an area where vehicles are permitted	Designated parking areas and public roadways, Randalls Cove foreshore, Strath Bay foreshore, Kirrang Point foreshore, and within club leases that have foreshore licences. Vehicles are otherwise not permitted on exposed areas, foreshores or lakebed.	Always
14 (2) (s)	Areas where vessels, or classes of vessels may be used	(r.86(2))	Specify area where vessels may be used	All areas except Tower Bay prohibited area, and only manually operated vessels can be used in the Randalls Cove manually operated zone.	Always
14 (3) (b)	Prohibited or restricted access <i>(Access by arrangement only)</i>	N/A	Continue the ongoing enjoyment of the recreational area by ensuring leases and licences delivering recreational facilities to the community are maintained	All leased and licenced areas for caravan parks, marinas, clubs and other appropriate organisations.	Always

Prohibited areas

Access to the Tower Bay area, shown in Figure 3, is prohibited at all times to protect the water supply infrastructure and to minimise risks to public safety.

Temporary closures

Temporary closures of GMW recreational areas may occur on occasion as outlined in the regulations.

A temporary closure will primarily occur to:

- Support the safe management of events such as floods and fires
- Allow for operational maintenance works to take place
- Allow for Cultural Heritage investigations to take place if required
- Manage amenities and access during periods of low water levels
- Manage safety during periods of high-water levels
- Rationalise maintenance requirements during times of low visitation
- Manage safety during water quality events such as algal blooms.

In the event of an immediate temporary closure, GMW will:

- Publish the determination of a temporary closure on the GMW website and promote it through social media
- Where possible, display signs or notices on-site providing details of the temporary closure determination
- Publish a notification on the GMW website.

All other temporary closures will be communicated with impacted parties a minimum of two weeks prior to the closure.

Events and permits

GMW storages and waterways are a great place to host personal, community or commercial events. An application for an event permit must be submitted to GMW no more than 12 months prior to the proposed event date.

The timeframe for approving an event permit can vary, but we recommend applying for your permit at least 90 days before the event. This will ensure that all appropriate arrangements have been considered prior to your event such as details of communications, relevant permits, and risk management. Incomplete information will delay this process.

An event permit application form must be submitted to GMW for any event including but not limited to:

- An organised entertainment, sporting or recreation event or show
- A rally
- An organised boating event or regatta
- A festival, tour, fete or public meeting
- A demonstration, training class or similar event
- A wedding or similar ceremony
- A private function of 30 or more people.

GMW's Event Permits Policy and Procedure recognises the differing requirements and responsibilities associated with standard and commercial events to allow for better decision making, outcomes and pricing which is reflective of the proposed event. A Commercial Pricing Strategy will be developed in 2026-27.

For more information and to apply for an event permit, visit:

www.gmwater.com.au/recreation/event-permits

Land and development opportunities

GMW regularly reviews opportunities to maximise its landholdings. This is generally by way of leasing, licensing or transfer where the land is deemed surplus to operational needs.

From time-to-time GMW will release an Expression of Interest (EOI) for targeted parcels or proposed commercial activities on land and/or on water. Anyone wishing to register for upcoming opportunities can do so by submitting their interest via our dedicated procurement website at <https://app.eprocure.com.au/gmwater/home/public>

Select “Classification” then “Property and Realty Services”.

For further assistance please contact Property Services on 1300 013 357 or e-mail eoigmwater.com.au

Occupation Licences

In areas around some of the GMW storages, GMW may allow structures and activities that require an Occupational Licence to be obtained from GMW.

Adjoining landowners may apply for an Occupation Licence to construct and/or keep privately owned structures for recreational purposes on foreshore land owned or managed by GMW. In some areas there may also be an opportunity to apply for an Occupation Licence to graze livestock or seek formal access over GMW-owned or managed land.

For more information and to apply for an Occupational Licence, visit the Occupation Licences page on GMW’s website at www.gmwater.com.au

Compliance and enforcement

The *Water (Recreational Area) Regulations 2023* introduced the ability for GMW to issue Penalty Infringement Notices (PINs) for offences under the regulations.

Water corporations can issue infringement penalties to users undertaking activities that are in breach of the regulations. These include activities that may risk land and water services, water quality, the environment, or the health, safety and enjoyment of other users within a recreational area.

Hunting

The plan acknowledges hunting as a lawful activity at Lake Eppalock and aligns with Victorian State Government policy, which allows regulated hunting in designated public lands and water bodies.

To appropriately manage the safety of visitors and GMW staff, all illegal or inappropriate behaviour will be reported to Victoria Police.

Operations and maintenance

Water supply operations and infrastructure

GMW harvests and stores water entitlements for its customers in accordance with the requirements set out in the *Water Act 1989*.

Water at Lake Eppalock is shared between GMW (82%) and Coliban Water (22%). The outlet capacity is 1,600 ML/day and releases are made to meet customer orders between 70 ML and 250 ML/day and to pre-release in advance of predicted rainfall that would result in the dam spilling.

GMW also delivers water for the Victorian and Commonwealth Environmental Water Holders who make decisions about watering sites with the aim of maintaining healthy environments.

Further information on the operations of Lake Eppalock can be found on the website:

www.gmwater.com.au/news-updates/notices/managing-water-levels-at-lake-eppalock.html

Maintenance of water supply and hydro-electric infrastructure (where applicable) at GMW-operated storages is primarily undertaken by GMW storage operations staff. Maintenance activities include:

- Regular inspection of all water supply infrastructure
- Periodic operation of key outlet works and lubrication of ropes and bearings
- Testing and servicing of ancillary equipment
- Weed control
- Access track and fence repair works.

Recreational facilities and assets

Recreational facilities and assets include but are not limited to toilet amenities, boat ramps, public access tracks, barbeques, and picnic furniture.

GMW has developed internal Operation and Maintenance (O&M) Manuals for recreation and land assets at each water storage. The O&M manuals include a description of each recreation and land asset, the associated standard operating and maintenance procedures and a maintenance schedule for storage staff to follow.

GMW storage staff undertake regular patrols and maintenance programs of GMW's public recreation areas as part of their O&M processes. The manuals and patrols support the management and reliability of GMW's recreational assets, ensuring they are reliable, operational, and safe for public use, and enable monitoring for environmental impacts such as rubbish dumping.

Vegetation management is undertaken through local maintenance programs by both GMW staff and trained arborists as necessary. If visitors have any concerns they are encouraged to contact GMW to report an issue.

A comprehensive internal review of these manuals is completed at least every five years to ensure their accuracy. The review enables our staff to safely and effectively perform maintenance activities, train new staff and continuously improve our recreation and land asset standards for the public.

Land that is occupied under licence or lease arrangements is required to be maintained in accordance with maintenance obligations detailed in lease/licence agreements.

Areas of public access may be restricted under an occupation agreement, subject to the conditions of that agreement.

Environment

GMW does not have a direct role in the management of invasive flora and fauna but actively supports and partners with the North Central Catchment Management Authority, the Victorian Fisheries Authority, DJAARA and Taungurung Land and Waters Council to deliver programs aimed at managing invasive species.

Water quality management

Water Quality Monitoring Program

The Major Storages Water Quality Monitoring Program involves the monitoring of water quality in 14 of GMW's major water storages including Lake Eppalock.

Specific objectives for the program are to:

- Provide an overview of the current and historic water quality in GMW's storages
- Examine water quality and assess compliance with guideline values recommended in current state and national guidance
- Identify water quality status and trends so that future management practices have the potential to improve water quality within the storages
- Examine blue-green algae events (particularly the number of warnings issued) and identify trends so that future management practices have the potential to limit the risk of blue-green algae.

Further details of water quality management at GMW storages can be viewed here:

www.gmwater.com.au/water-operations/water-quality

Blue green algae

GMW is responsible for the management of blue-green algal blooms within our storages, irrigation channels and drains. GMW regularly monitors and inspects water bodies within our area of operation for blue-green algae. Find out more about our blue green algae warnings here:

www.gmwater.com.au/water-operations/bga

Wastewater management

Wastewater includes all septic tank effluent and sullage water. Untreated wastewater can transmit pathogens and viruses as well as nutrients, salts and heavy metals to Lake Eppalock if not managed properly.

GMW operates and maintains extensive and complex wastewater management systems at Lake Eppalock. The systems include effluent pump transfer stations, effluent lagoons and wastewater treatment plants for individual toilet blocks. The system services the 30 club leases and six public toilet blocks. There are also four commercial caravan park lease sites with individual effluent systems.

Any leased sites must comply with lease agreement obligations and Environmental Protection Authority guidelines in Victoria. This requires all effluent/sullage from ablution blocks on leased land to be connected to an approved wastewater system in accordance with current standards and guidance.

GMW is currently undertaking works to assess and improve the way in which wastewater is managed at Lake Eppalock.

Implementation plan

Table 3 provides a summary of the measures to be implemented to meet the objectives of this management plan.

Table 3 Implementation plan

Objective	Actions to meet objectives	Implementation timeframe	Responsibility
1. Protect the land, services and GMW facilities in the area	Maintenance of facilities in accordance with Operations and Maintenance Manuals	Ongoing	GMW
	Development of Recreational Area Future Service Approach (including service standards)	2025–2026	
2. Protect and maintain water quality in waterways in the area	Water Quality Monitoring Program	Ongoing	GMW
	Blue green algae monitoring and reporting of warnings	Ongoing	
	Signage and public education on practices to minimise impact to water quality	Ongoing	
3. Conserve and preserve flora, fauna and habitat in the area, including the biodiversity of that flora, fauna and habitat	Facilitate delivery of water for the environment to support Victorian and Commonwealth Environmental Water Holders (who make decisions about watering sites with the aim of maintaining healthy environments)	Ongoing	GMW
	Signage and education to ensure visitors are aware of their responsibilities to protect the environment, including respecting GMW bylaws and taking their rubbish with them	Ongoing	
	Water Quality Monitoring Program	Ongoing	
	Flora and fauna - Investigate opportunities to collaborate with DJAARA and relevant agencies to protect and re-establish native flora and fauna habitats, including native fish species and bird life. This could include management of erosion, developing lists of culturally significant plant species, organising community planting days, establishment of exclusion and revegetation zones. This could also be achieved through education and signage (See education action against objective 6 for further information)	Short to medium term priority (2025-2030) transitioning to business as usual operations (BAU)	
4. Protect the health and safety of visitors to the area	Implementation of set aside areas	Ongoing	GMW
	Water safety program	Ongoing	
	Public information and signage	Ongoing	
5. Promote the enjoyment and recreation of visitors to the area	Public information and signage	Ongoing	GMW
	Maintenance of facilities in accordance with O&M Manuals	Ongoing	
	Commercial Pricing Strategy	2026-2027	
	Accessibility – investigate opportunities to establish areas with all abilities access that allow all community members, particularly elders, people with reduced mobility using mobility aids including wheelchairs and walkers, and parents with prams, to access and experience the waters edge.	Ongoing in line with GMW's recreational investment prioritisation framework	GMW
	See actions against objectives 6-8 below for promoting enjoyment and recreation of First Nations groups to the area.	See below	
6. Protect and promote Aboriginal cultural heritage and Aboriginal intangible heritage in the area	Signage – Co-design and develop culturally relevant signage for recreational areas that shares information about Djaara history, stories and cultural significance	Short to medium term priority (2025-2030) transitioning to business as usual operations (BAU)	GMW/ Traditional Owner groups (DJAARA and the Taungurung Land and Waters Council)
	Language – Collaborate with Djaara to understand traditional names and translations for Lake Eppalock. Display naming on signage and other public communications	Short term priority (2025-2026)	
	Design - Investigate opportunities to partner with DJAARA's DJANDAK Enterprise on the design of new facilities or areas identified for improvement. Facilities should incorporate DJAARA design principles or elements.	Medium term priority (2025-2030) transitioning to business as usual operations (BAU)	

Objective	Actions to meet objectives	Implementation timeframe	Responsibility
	Website/social media - Develop communications to share approved knowledge/stories or remind visitors to respect Country on both GMW and DJAARA platforms. Ensure all information on GMW website is reviewed and kept up to date with general information about DJAARA.	Short term priority (2025-2026) transitioning to business as usual operations (BAU)	
	Cultural days – support opportunities identified by DJAARA’s DUMAWUL Enterprise to use Lake Eppalock for tourism and educational purposes	Medium term priority (2025-2030) transitioning to business as usual operations (BAU)	GMW/DJAARA
	Education/preventing misuse - Investigate ways to improve signage or install barriers to ensure proper use of designated parking areas and to minimise off road driving and pollution, to preserve and protect the natural environment and remaining cultural heritage of Lake Eppalock.	Medium term priority (2025-2030) transitioning to business as usual operations (BAU)	GMW/DJAARA
	Culturally significant sites – support opportunities for Cultural Values Assessments at Lake Eppalock in the event that the reservoir dries out, providing the opportunity for archaeological field work to be undertaken below water levels.	Ongoing – dependant on water levels	GMW/DJAARA
7. Facilitate the participation of Traditional Owner groups in the management of that area, including in accordance with any agreements under the Traditional Owner Settlement Act 2010 that apply to the area	Resource mapping - support DJAARA in the design of resource maps for Lake Eppalock to identify key locations such as areas with significant flora and fauna for harvesting, quiet zones, swimming or no boat areas that are suitable for cultural activities.	Short term priority (2025-2026)	GMW/DJAARA
8. Ensure that the area is managed and used in a way that respects and upholds the rights and aspirations of Traditional Owner groups who have a connection to the area	Cultural practices –explore ways to support cultural practices such as weaving and tree scarring.	Ongoing	GMW/DJAARA
	Look for opportunities to partner and collaborate with DJAARA by engaging with DJANDAK’s design team, language team and Gatjin team on relevant future works (in line with actions to meet objective 6).	Ongoing	GMW/DJAARA
	Provide opportunities for Djaara to be involved in any future studies on flora and fauna at Lake Eppalock (in line with actions to meet objective 3).	Ongoing	GMW/DJAARA
9. Protect and promote other heritage features in the area	GMW recognise and respect the importance of protecting and promoting existing post-contact heritage places within our recreation areas. Ongoing management of such sites will be undertaken in line with the relevant historic heritage legislation and data sets including: <ul style="list-style-type: none"> • World Heritage List • National Heritage List • Commonwealth Heritage List • Register of the National Estate (non-statutory) • National Trust • Victorian Heritage Register • Victorian Heritage List • Local Planning Scheme Heritage Overlays 	Ongoing	GMW