

Things to do

Fishing

Lake Eildon is one of Victoria's most popular freshwater fishing destinations for Redfin, Perch, Murray Cod and Trout. Fisheries Victoria keeps the lake and pondage stocked, so there's always a fish or two to be caught.

Try the Eildon Pondage for a great day's fishing, with a purpose built pier and floating jetty with disability and wheelchair access.

For the latest information on fishing in Victoria, contact Fisheries Victoria on 136 186, and don't forget your Recreational Fishing Licence!

Camping

Camping at Lake Eildon is only allowed in commercial caravan parks and designated camping areas located around the lake (see map and Facilities section). You can find out more about the caravan parks by visiting: www.gmwater.com.au/recreation-tourism/caravan-parks

Boating

Lake Eildon is the only reservoir in Victoria where houseboats and cabin cruisers, with accommodation, can operate under licence or permit.

Hire and drive house boating is a great way for the family to see Lake Eildon and with 13,000 hectares of water, there's plenty of room to play.

There are ten public boat ramps located around the lake (see map).

A 5 knot speed limit applies at any level within 50 metres of the water's edge, other vessels, navigation aids, swimmers and fixed or floating structures; and within 100 metres of vessels displaying a dive flag.

Keep a lookout at all times for hazards and other vessels.

Refer to the Victorian Recreational Boating Safety Handbook (available online at www.transportsafety.vic.gov.au) for information on staying safe while boating.

Water levels

The water in Lake Eildon is owned by GMW customers, who produce food and fibre, supply towns and businesses, and protect and improve environmental waterway health.

Visitors need to be conscious of potential hazards and consider their own safety and the safety of other users at all times. Water levels (high or low) can prompt increased safety measures, and changes to access for recreational areas and boating. Safety information and alerts will be signposted at public areas and boat ramps.

You can find more information about water levels at www.gmwater.com.au/storage-levels

Blue-Green Algae

At times, the level of blue-green algae in storages can exceed safe limits. When this happens you should avoid direct contact with water as the algae can cause skin rashes; itchiness; sore eyes, ears and nose; and nausea.

If unsafe blue-green algae levels occur, warning signs will be positioned at major recreational areas around the storage.

Recreational users can still boat, sightsee and enjoy other activities that don't involve direct contact with the water.

Blue-green algae warnings can be found online at www.gmwater.com.au/bluegreenalgae-alert or phone the 24 hour GMW blue-green algae hotline on (03) 5826 3785.

Lake Eildon is one of 24 lakes, dams and reservoirs managed by GMW to capture, store and deliver 70% of Victoria's stored water across the region.





For more information on GMW and its operations visit www.gmwater.com.au



Welcome to Lake Eildon



 /goulburnmurraywater
 @GMWater_Lakes_Dams
#GMWater_Lakes_Dams

About Lake Eildon

Lake Eildon is one of the state's most important inland waterways, supplying about 60 per cent of the water used in the Goulburn-Murray Irrigation District.

The lake is also used by 25 per cent of all Victorian inland boaters visiting each year.

A two hour drive from Melbourne, Lake Eildon is surrounded by national parks and is known as the Gateway to the High Country.



Facilities

Lake Eildon has facilities to suit every visitor, including caravan parks, picnic areas with electric barbecues and public amenities, ten boat ramps, public and private marinas, lake viewing areas and access to the dam wall.

The beautiful national park surrounds are perfect for sightseeing and the Delatite Arms Reserve, Fraser Camping Grounds and Jerusalem Creek Campground have large and very popular campsites with basic camping facilities.

For more information on the full range of facilities at Lake Eildon, visit:

www.lakeeildon.com
www.delwp.vic.gov.au
www.parkweb.vic.gov.au
www.mansfieldmtbuller.com.au
www.alexandratourism.com.au

Events

GMW'S lakes, dams and reservoirs are ideal places for events. If you would like to host an event at one of our reserves, visit: www.gmwater.com.au/events.

DON'T FORGET YOUR WATER SMARTS



gmwater.com.au/watersmarts

Caring for Lake Eildon

Lake Eildon is a beautiful natural resource. Please care for the lake so it can be enjoyed now and into the future.

- Camping and campfires are prohibited in GMW reserves and on foreshore and lakebed areas
- Refer to your local council for landfill services and consider the environment when disposing of your litter. Penalties apply for illegal dumping of rubbish
- Don't take plants from the foreshore, or bring any in
- Don't feed the animals or wildlife, or interfere with their habitats
- Keep to 5 knots within 50 metres of the shore, as the boat wash can cause erosion
- Vehicles and trail bikes are only allowed on public roads within the reserve
- All vehicles must be registered and users must be licensed
- Keep the waterway healthy by not using soap, toothpaste or detergent in the lake
- Dogs and horses must be on a lead and/or under control at all times and aren't allowed to enter the lake. Please clean up after your pets
- Dogs and cats aren't permitted in Lake Eildon National Park (www.parks.vic.gov.au)
- Firearms are permitted for deer hunting on a seasonal basis only, with appropriate permits (www.gma.vic.gov.au).

A copy of GMW's recreational by-law can be found online at: www.gmwater.com.au/recreation-tourism



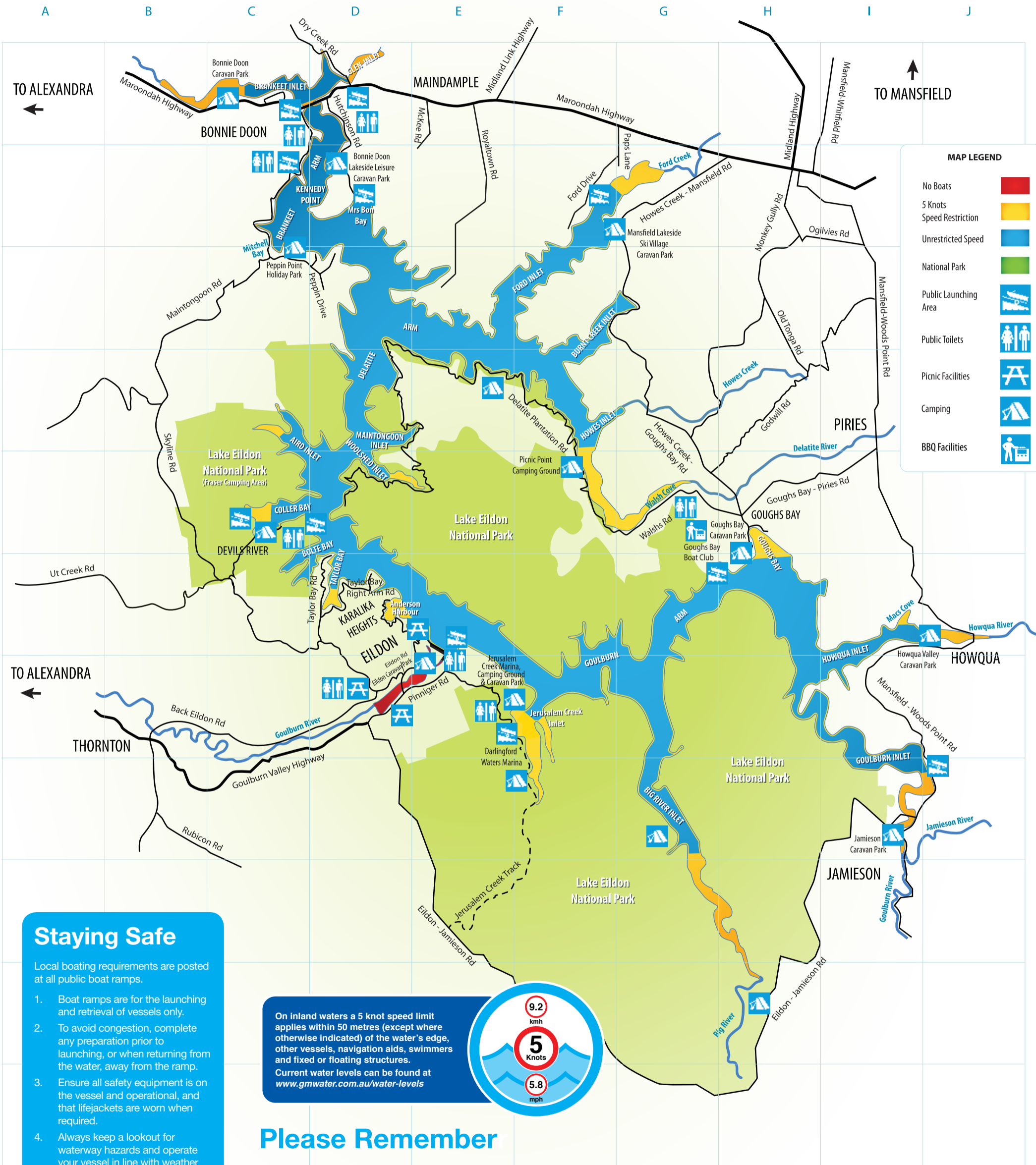
Lake Eildon boating and facilities guide



0 km 2 km 4 km
Scale of Kilometres



Lake Eildon is the only reservoir in Victoria where houseboats and cabin cruisers, with accommodation, can operate under licence or permit. Parasailing is prohibited without prior written consent by GMW.



MAP LEGEND

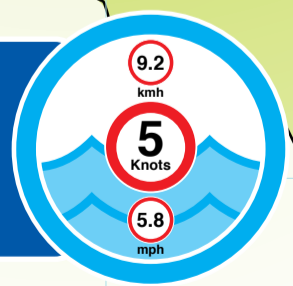
- No Boats
- 5 Knots Speed Restriction
- Unrestricted Speed
- National Park
- Public Launching Area
- Public Toilets
- Picnic Facilities
- Camping
- BBQ Facilities

Staying Safe

Local boating requirements are posted at all public boat ramps.

1. Boat ramps are for the launching and retrieval of vessels only.
2. To avoid congestion, complete any preparation prior to launching, or when returning from the water, away from the ramp.
3. Ensure all safety equipment is on the vessel and operational, and that lifejackets are worn when required.
4. Always keep a lookout for waterway hazards and operate your vessel in line with weather and waterway conditions.
5. Parking is only allowed in designated areas.
6. Ensure no one is in or on the vessel when moving to and from the ramp.
7. Shade structures aren't allowed within 50 metres of either side of boat ramps.
8. Stay clear of dam infrastructure.

On inland waters a 5 knot speed limit applies within 50 metres (except where otherwise indicated) of the water's edge, other vessels, navigation aids, swimmers and fixed or floating structures.
Current water levels can be found at www.gmwater.com.au/water-levels



Please Remember

- No fires allowed. Camping is only permitted in designated areas.
- Confine vehicles and motor bikes to formed public roads.
- Take your rubbish home.



Scan to visit the Lake Eildon page on GMW's website.