

Goulburn-Murray Irrigation District

GMW Connections Project Fact Sheet

GOULBURN-MURRAY
WATER



November 2015
Fact Sheet 10

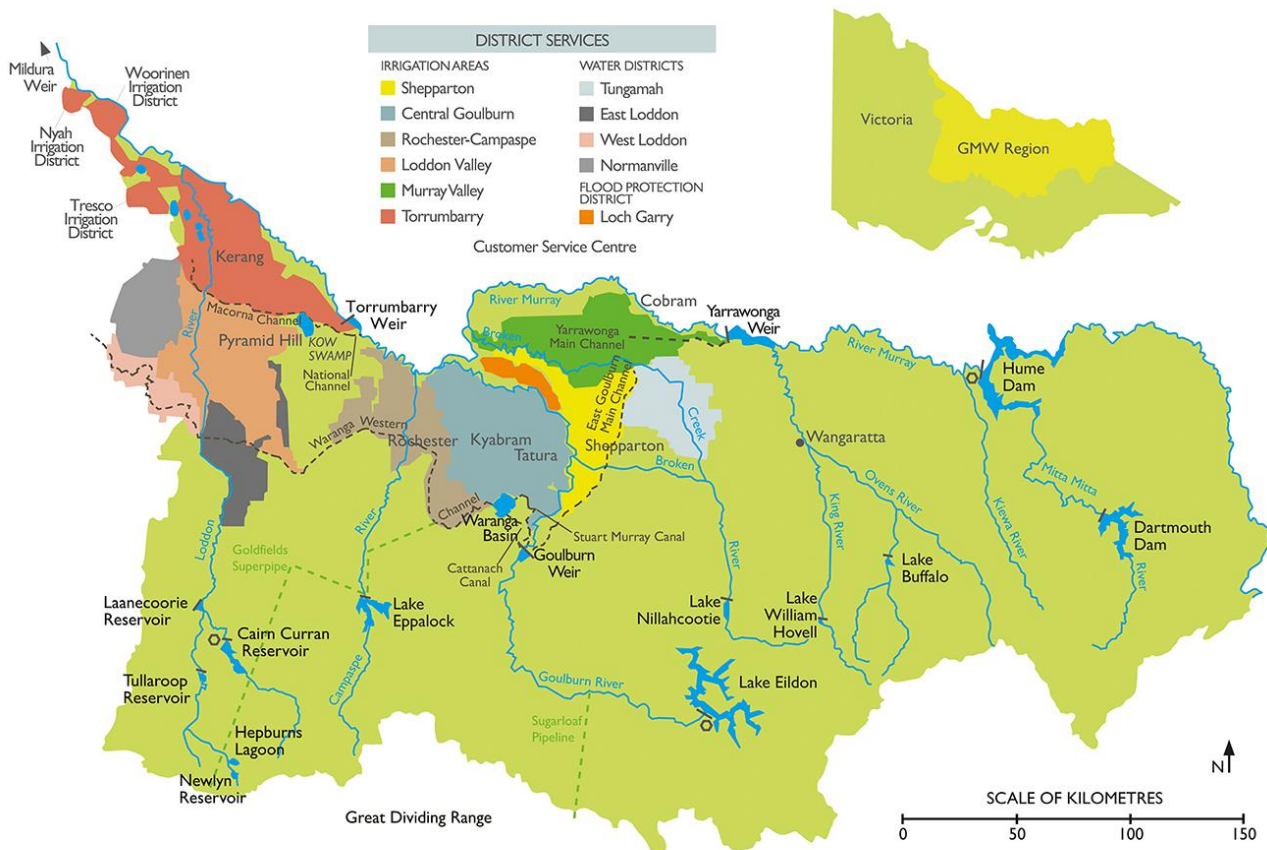


Image: GMW'S Area, including the Goulburn-Murray Irrigation District

The Goulburn-Murray Irrigation District (GMID) system is the largest irrigation system in Victoria. It covers 9,950 square kilometres and accounts for more than 70 per cent of water stored in Victoria and almost 90 per cent of water used in irrigation across the State.

The GMW Connections project has organised the GMID into five distinct areas, each with unique characteristics. Each area presents different challenges and requires carefully considered connections solutions.

Central Goulburn Irrigation Area

The Central Goulburn Irrigation Area (CGIA) is situated around the townships of Tatura and Mooroopna in the east, extending to Kyabram and Echuca in the west of Northern Victoria.

The CGIA has the largest number of customers in the GMID. Approximately 40 per cent of customers in the CGIA are classified as rural lifestyle or residential properties. Dairy farmers make up approximately 21 per cent of customers in the area.

Expected water savings: 110 GL
No. of Special Connections Projects (SCPs): 47
No. of Landowners: Approximately 2100

Loddon Valley Irrigation Area

The Loddon Valley Irrigation Area (LVIA) is situated around the townships of Pyramid Hill and Boort in North West Victoria.

Mixed farming accounts for over 53 per cent of the farming enterprises in the LVIA.

The irrigation water for the LVIA is sourced primarily from the Waranga Western Channel and the Loddon River.

Expected water savings: 58 GL

No. of SCPs: 19

No. of Landowners: Approximately 1500

Murray Valley Irrigation Area

The Murray Valley Irrigation Area (MVIA) is situated around the townships of Cobram, Numurkah and Nathalia in Northern Victoria.

The MVIA has an even spread of dairy farming, grazing, mixed farming and rural lifestyle customers.

Expected water savings: 79 GL

No. of SCPs: 47

No. of Landowners: Approximately 900

Rochester Irrigation Area

The ROIA is situated around the townships of Rochester and Echuca in Northern Victoria.

Mixed farming and dairy make up approximately for nearly 50 per cent of the farming enterprises in the ROIA.

The ROIA is supplied with water from the Goulburn River via the Waranga Western Channel; this supply is supplemented by water from the Campaspe River.

Expected water savings: 63 GL

No. of SCPs: 30

No. of Landowners: Approximately 1570

Torrumbarry Irrigation Area

The TOIA is situated around the townships of Swan Hill, Cohuna and Kerang in North West Victoria.

Natural waterways and constructed channels are used both for irrigation supply and for carrying floods and drainage.

The environmental values of wetlands in the system are world class and have been recognized through their nomination to the International Convention on Wetlands - the "Ramsar Convention".

Expected water savings: 86 GL

No. of SCPs: 38

No. of Landowners: Approximately 2000

Shepparton Irrigation Area

The Shepparton Irrigation Area (SPIA) in the GMID stretches from near Nathalia in the north, to past Shepparton in the south.

The SPIA is a special project that has been divided into two parts; Shepparton and Shepparton East.

Modernisation works are complete in Shepparton, however works continue in Shepparton East.

Agriculture in this region is dominated by dairy and fruit production.

Expected water savings: 1.54 GL

No. of Landowners: Approximately 50