

RUBICON RIVER CATCHMENT LOCAL MANAGEMENT RULES



1. Catchment Information

The Rubicon River joins the Goulburn River just downstream of Thornton and approximately 20km downstream of Lake Eildon, and encompasses an area of approximately 172 km². The mean annual flow at the bottom of the catchment is approximately 106,500 ML/yr. The Goulburn Broken Regional River Health Strategy lists the Rubicon River as a high value asset as it contains Barred Galaxis, and has key issues including poor riparian width and stock access.

The catchment is bound to the east by the Big River catchment and to the west by the Acheron River catchment. Significant tributaries of Rubicon River include the Royston and Little Rubicon Rivers, Quartz, Keppler and Tom Bums Creek. The main township within the catchment is Rubicon. Within the catchment the predominant industry is dryland farming in the lower catchment, a hydro-electricity scheme within the middle catchment and predominantly forested within the upper reaches.

2. Management of Licences

Restriction Triggers for each stage of restriction.

Restriction Stages	Trigger Values for Introduction of Next Stage of Restriction	Percent Restrictable Demand
Stage 3 (Roster)	<= 25 ML/day	50%
Stage 5 (Suspension)	<= 10 ML/day	100%

Note: Restrictions are implemented during dry periods prior to flows reducing to the trigger value. For example, if a river flow is reducing rapidly, a higher stage or suspension will be put in place before the trigger level is reached to provide for adequate flow for domestic and stock use and the environment.

3. Compliance Point

There is a surface water monitoring station located downstream of Rubicon on Rubicon Road.

4. Licences

Licence Allocation in Rubicon River and Tributaries

Licence Type	Number of Licences	Volume (ML)
Irrigation	25	474.7
Registered Dams	3	359
Total	28	833.7

5. Additional Information

Stream codes and sustainable diversion limit zones are provided within this document for identification purposes when discussing the catchment diversion management with Goulburn-Murray Water Officers.

Stream Codes

Stream codes used in the management of the Rubicon River and Tributaries:
4050269

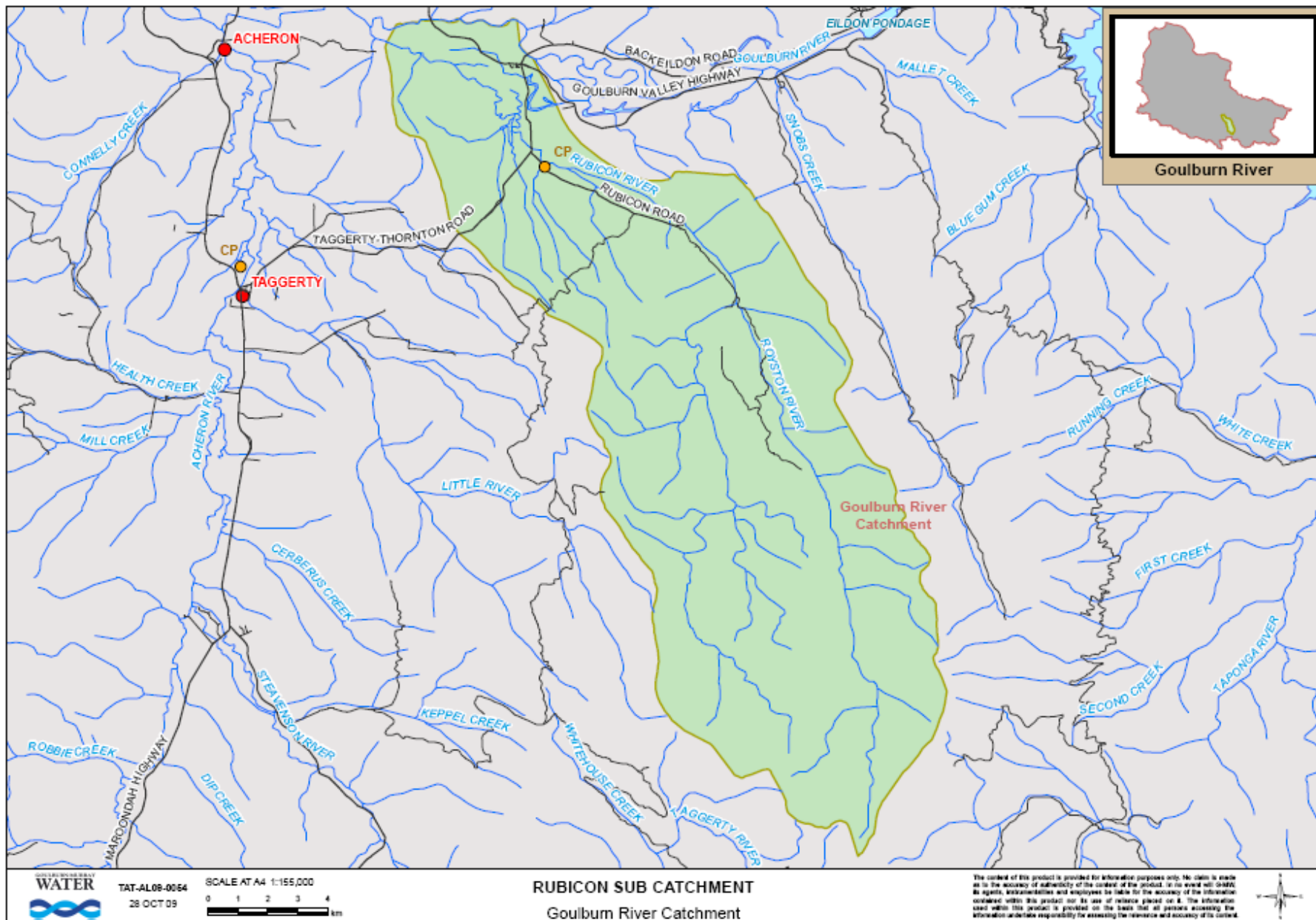
Sustainable Diversion Limit zones

Sustainable Diversion Limit zones used in the management of surface water trade within the Hughes catchment:
4050802 4050801

For general information call or visit

1800 013 357

www.g-mwater.com.au



Goulburn River



TAT-AL08-0054
28 OCT 09

SCALE AT A4 1:155,000
0 1 2 3 4
km

RUBICON SUB CATCHMENT
Goulburn River Catchment

The content of this product is provided for information purposes only. No claim is made as to the accuracy or authenticity of the content of the product. In no event will GHD, its agents, subcontractors and employees be liable for the accuracy of the information contained within this product for its use of release placed on it. The information used within this product is provided on the basis that all persons accessing the information undertake responsibility for assessing the relevance and accuracy of its content.

