

# REEDY CREEK CATCHMENT- YELLOW CREEK TO OVENS LOCAL MANAGEMENT RULES



## 1. Catchment Information

The Reedy Creek lower is managed from the confluence of Yellow Creek to the Ovens River and encompasses an area of approximately 30 km<sup>2</sup>. The mean annual flow at the bottom of the Reedy Creek catchment is approximately 8,360 ML/yr. The North East Regional River Health Strategy lists the Lower Ovens Tributaries Management Unit as it contains significant environmental values, including Mountain Galaxias and River Blackfish. Key issues identified within the catchment are sediment inputs, degraded water quality, stock access, cultivation, degraded riparian vegetation and channel modification.

The catchment is bound to the south by the Ovens River catchment and the north by the Black Dog Creek catchment. There are no significant tributaries influencing the lower Reedy Creek. The Lower Reedy Creek is predominantly cleared apart from the riparian vegetation along the creek. The main industry in the catchment is dryland farming.

## 2. Management of Licences

Restriction Triggers for each stage of restriction.

Restriction Stages	Trigger Values for Introduction of Next Stage of Restriction	Percent Restrictable Demand
Stage 5 (Suspension)	<=10 ML/day	100%

**Note:** Restrictions are implemented during dry periods prior to flows reducing to the trigger value. For example, if a river flow is reducing rapidly, a higher stage or suspension will be put in place before the trigger level is reached to provide for adequate flow for domestic and stock use and the environment.

## 3. Compliance Point

There is a surface water monitoring station located Bowser Road, which is Reedy Creek @ Wangaratta (Station No. 403209).

## 4. Licences

Licence Allocation in Reedy Creek and Tributaries

Licence Type	Number of Licences	Volume (ML)
Irrigation	4	142
<b>Total</b>	<b>4</b>	<b>142</b>

## 5. Additional Information

Stream codes and sustainable diversion limit zones are provided within this document for identification purposes when discussing the catchment diversion management with Goulburn-Murray Water Officers.

### Stream Codes

Stream codes used in the management of the Reedy Creek and Tributaries.

4030455

### Sustainable Diversion Limit zones

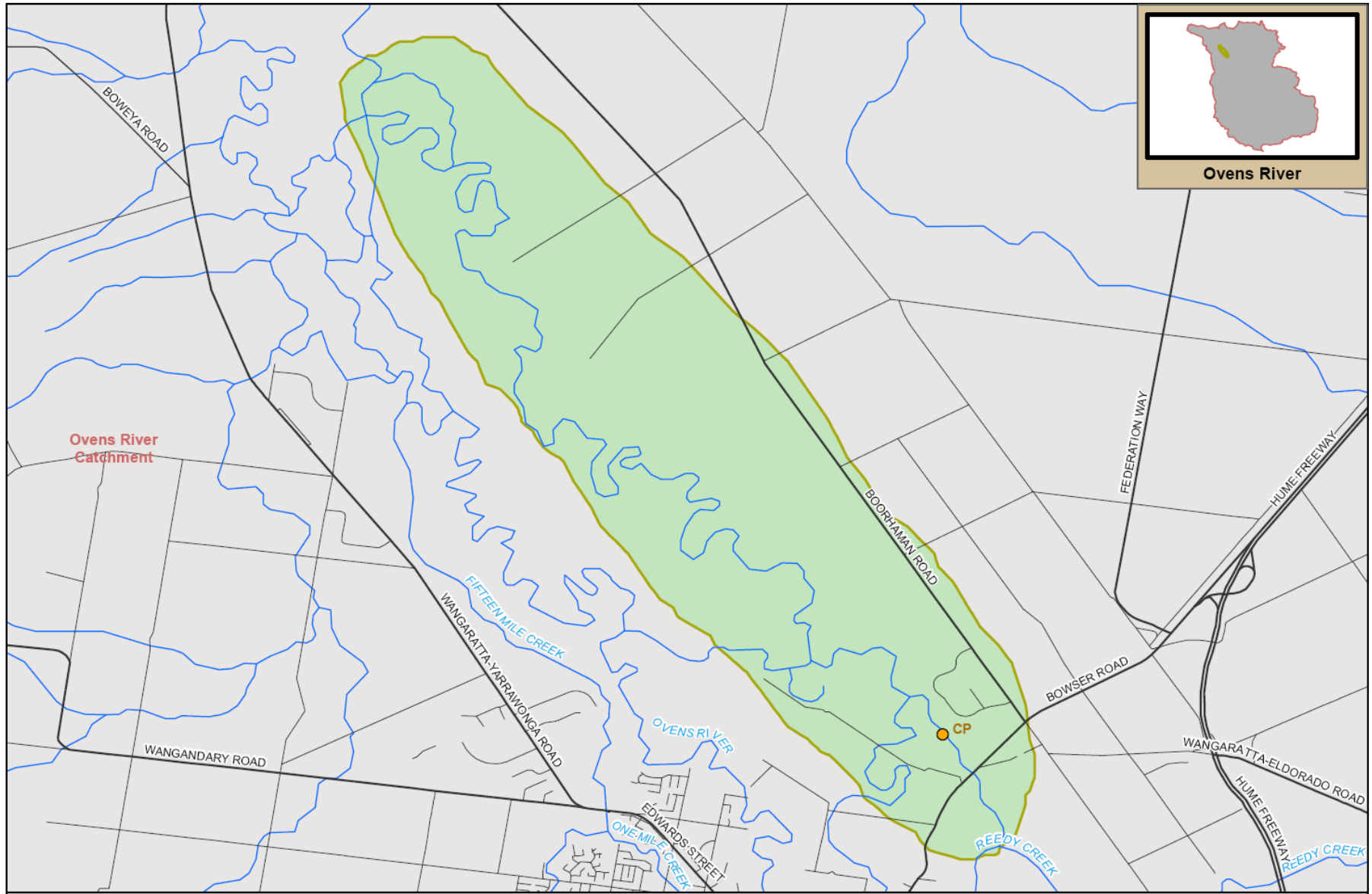
Sustainable Diversion Limit zones used in the management of surface water trade within the Reedy Creek catchment:

4030907

For general information call or visit

1800 013 357

[www.g-mwater.com.au](http://www.g-mwater.com.au)



Ovens River Catchment

**REEDY CREEK - YELLOW CREEK TO OVENS SUB CATCHMENT**

Ovens River Catchment



TAT-AL09-0054  
28 OCT 09

SCALE AT A4 1:65,000  
0 1 2 km

The content of this product is provided for information purposes only. No claim is made as to the accuracy of authenticity of the content of the product. In no event will G-MW, its agents, representatives and employees be liable for the accuracy of the information contained within this product nor its use or reliance placed on it. The information used within this product is provided on the basis that all persons accessing the information undertake responsibility for assessing the relevance and accuracy of its content.

