

NARIEL CREEK CATCHMENT LOCAL MANAGEMENT RULES



1. Catchment Information

The Nariel Creek flows into the Murray River approximately 4km downstream of Towong, and encompasses an area of approximately 972 km². The mean annual flow at the bottom of the Nariel Creek catchment is approximately 317,610 ML/yr. The North East Regional River Health Strategy lists the Upper River Murray Tributaries Management Unit as it contains significant environmental values, including Alpine Spiny Cray, Mountain Galaxias and River Blackfish. Key issues identified within the catchment are exotic flora, stock access, degraded water quality and degradation of riparian vegetation.

The catchment is bound to the east by the Murray River catchment and the west by the Cudgewa Creek catchment. Significant tributaries of Nariel Creek include Corryong, Thowlga, Kangaroo, Burbibyong, Wheeler, Simpsons, Paddy Joy and Steep Creeks. The main towns within the catchment include Towong, Corryong and Nariel. The catchment is predominantly forested in the upper and middle catchments, which are covered by the Alpine National Park and the Wabba Wilderness Park. The lower catchment supports industry such as dairy, peppermint and dryland farming.

2. Management of Licences

Restriction Triggers for each stage of restriction.

Restriction Stages	Trigger Values for Introduction of Next Stage of Restriction	Percent Restrictable Demand
Stage 1 (Roster)	50 ML/day	0%
Stage 2	40 ML/day	25%
Stage 3	30 ML/day	50%
Stage 4	20 ML/day	75%
Stage 5 (Suspension)	<=10 ML/day	100%

Note: Restrictions are implemented during dry periods prior to flows reducing to the trigger value. For example, if a river flow is reducing rapidly, a higher stage or suspension will be put in place before the trigger level is reached to provide for adequate flow for domestic and stock use and the environment.

3. Compliance Point

The Nariel Creek catchment is managed to the gauging station, Corryong Creek @ Towong (Station No. 401230).

4. Licences

Licence Allocation in Nariel Creek and Tributaries

Licence Type	Number of Licences	Volume (ML)
Irrigation	59	1210.6
Registered Dams	27	823
Total	86	2033.6

5. Additional Information

Stream codes and sustainable diversion limit zones are provided within this document for identification purposes when discussing the catchment diversion management with Goulburn-Murray Water Officers.

Stream Codes

Stream codes used in the management of the Nariel Creek and Tributaries:

4015152 4015172

Sustainable Diversion Limit zones

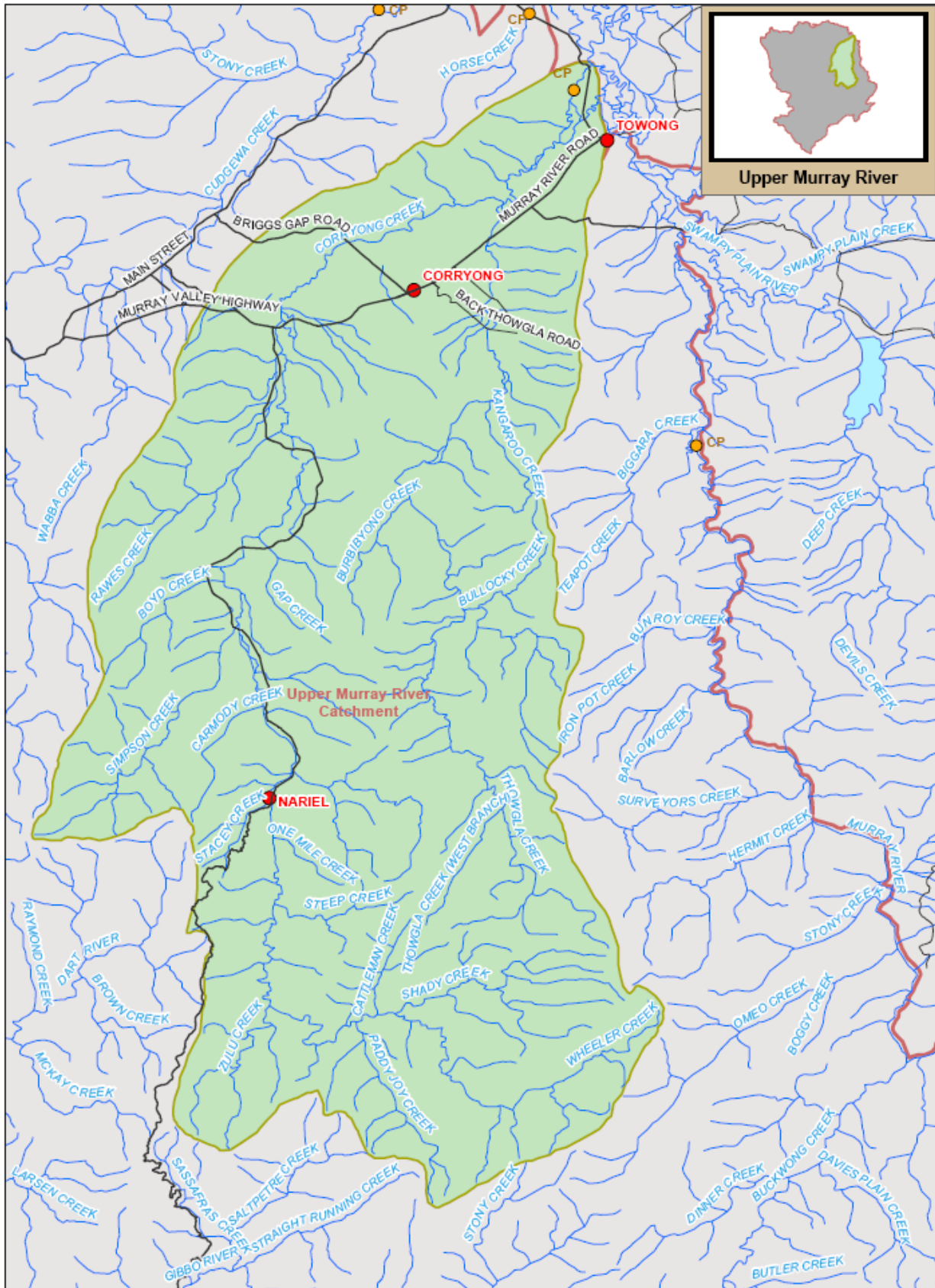
Sustainable Diversion Limit zones used in the management of surface water trade within the Nariel Creek catchment:

4010701, 4010702, 4010703, 4010704, 4010705, 4010706, 401070

For general information call or visit

1800 013 357

www.g-mwater.com.au



NARIEL CREEK SUB CATCHMENT



SCALE AT A4 1:260,000
 TAT-AL09-0054
 28 OCT 09

Upper Murray River Catchment



The content of this product is provided for information purposes only. No claim is made as to the accuracy or authenticity of the content of the product. In no event will GWRW, its agents, contractors and employees be liable for the accuracy of the information contained within this product nor its use or reliance placed on it. The information used within this product is provided on the basis that all persons accessing the information undertake responsibility for assessing the relevance and accuracy of its content.

