

MCIVOR CREEK CATCHMENT LOCAL MANAGEMENT RULES

GOULBURN-MURRAY
WATER



1. Catchment Information

The Mclvor Creek flows into Lake Eppalock approximately 8 km downstream of Heathcote, and encompasses an area of approximately 174 km². The mean annual flow at the bottom of the Mclvor Creek catchment is approximately 13,890 ML/yr.

The catchment is bound to the west by the Wild Duck Creek catchment and the east by the Goulburn River catchment. Significant tributaries of Mclvor Creek include Mount Ida Creek and a number of spring fed gullies. The main towns within the catchment include Heathcote and Tooborac. The catchment is predominantly cleared along the creek valley which supports dryland farming and some viticulture. The hills surrounding the valley, especially in the lower and middle catchment are forested and are covered by the Heathcote-Graytown National Park and the Spring Plains Nature Conservation Reserve.

2. Management of Licences

Restriction Triggers for each stage of restriction.

Restriction Stages	Trigger Values for Introduction of Next Stage of Restriction	Percent Restrictable Demand
Stage 5 (Suspension)	<= 3 ML/Day	100%

Note: Restrictions are implemented during dry periods prior to flows reducing to the trigger value. For example, if a river flow is reducing rapidly, a higher stage or suspension will be put in place before the trigger level is reached to provide for adequate flow for domestic and stock use and the environment.

3. Compliance Point

There is a surface water monitoring station located on the Mclvor Highway, downstream of Heathcote.

4. Licences

Licence Allocation in Mclvor Creek and Tributaries

Licence Type	Number of Licences	Volume (ML)
Irrigation	12	130.7
Registered Dams	9	116
Total	21	146.7

5. Additional Information

Stream codes and sustainable diversion limit zones are provided within this document for identification purposes when discussing the catchment diversion management with Goulburn-Murray Water Officers.

Stream Codes

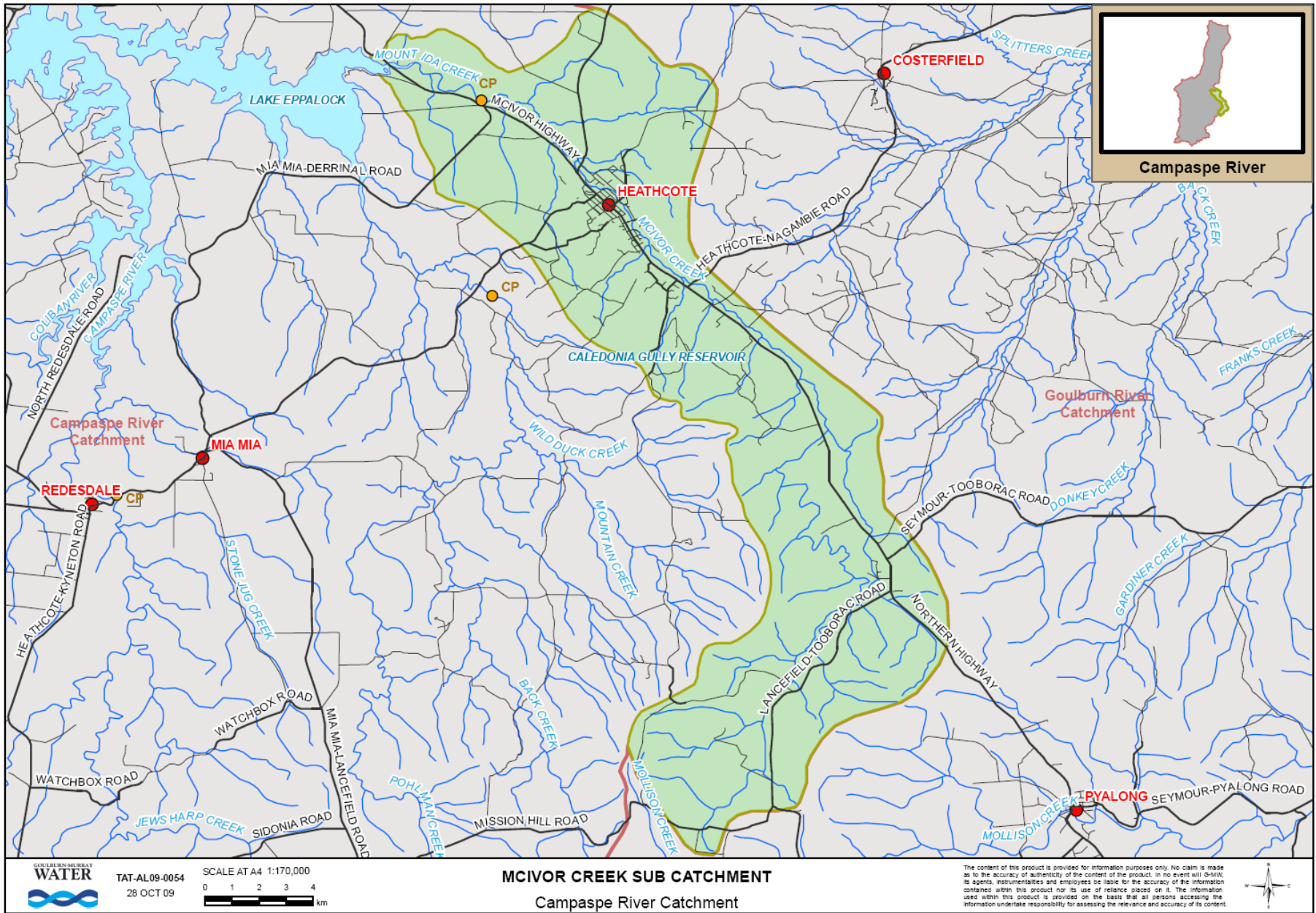
Stream codes used in the management of the Mclvor Creek and Tributaries:
4060136

Sustainable Diversion Limit zones

Sustainable Diversion Limit zones used in the management of surface water trade within the Mclvor Creek catchment:
4060204, 4060205, 4060207, 4060206

For general information call or visit
1800 013 357

www.g-mwater.com.au



Campaspe River



TAT-AL09-0054
26 OCT 09

SCALE AT A4 1:170,000
0 1 2 3 4 km

MCIVOR CREEK SUB CATCHMENT
Campaspe River Catchment

The content of this product is provided for information purposes only. No claim is made as to the accuracy of authenticity of the content of the product. In no event will G-MW, its agents, instrumentalities and employees be liable for the accuracy of the information contained within this product nor its use of reliance placed on it. The information used within this product is provided on the basis that all persons accessing the information undertake responsibility for assessing the relevance and accuracy of its content.

