

LITTLE COLIBAN RIVER CATCHMENT LOCAL MANAGEMENT RULES



1. Catchment Information

The Little Coliban River flows into the Upper Coliban Reservoir approximately 6 km west of Carlsruhe, and encompasses an area of approximately 57 km². The mean annual flow at the bottom of the Little Coliban River catchment is approximately 10,400 ML/yr. The North Central River Health Strategy lists the Little Coliban River as part of the Coliban program area. Key issues identified within the catchment are exotic flora, stock access, water quality, degraded riparian vegetation and introduced fauna.

The catchment is bound to the east by the Campaspe River catchment and the west by the Coliban River catchment. The main tributaries of the Little Coliban River include Jones and Milking Yard Creeks. The main township within the catchment is Tylden. The catchment is predominantly cleared across the catchment, supporting dryland farming as the main industry.

2. Management of Licences

Restriction Triggers for each stage of restriction.

Restriction Stages	Trigger Values for Introduction of Next Stage of Restriction	Percent Restrictable Demand
Stage 5 (Suspension)	<=3 ML/Day	100%

Note: Restrictions are implemented during dry periods prior to flows reducing to the trigger value. For example, if a river flow is reducing rapidly, a higher stage or suspension will be put in place before the trigger level is reached to provide for adequate flow for domestic and stock use and the environment.

3. Compliance Point

The Little Coliban River is visually monitored to 3 ML/Day below Tylden.

4. Licences

Licence Allocation in Little Coliban River and Tributaries

Licence Type	Number of Licences	Volume (ML)
Irrigation	4	62
Registered Farm Dams	21	397
Total	25	459

5. Additional Information

Stream codes and sustainable diversion limit zones are provided within this document for identification purposes when discussing the catchment diversion management with Goulburn-Murray Water Officers.

Stream Codes

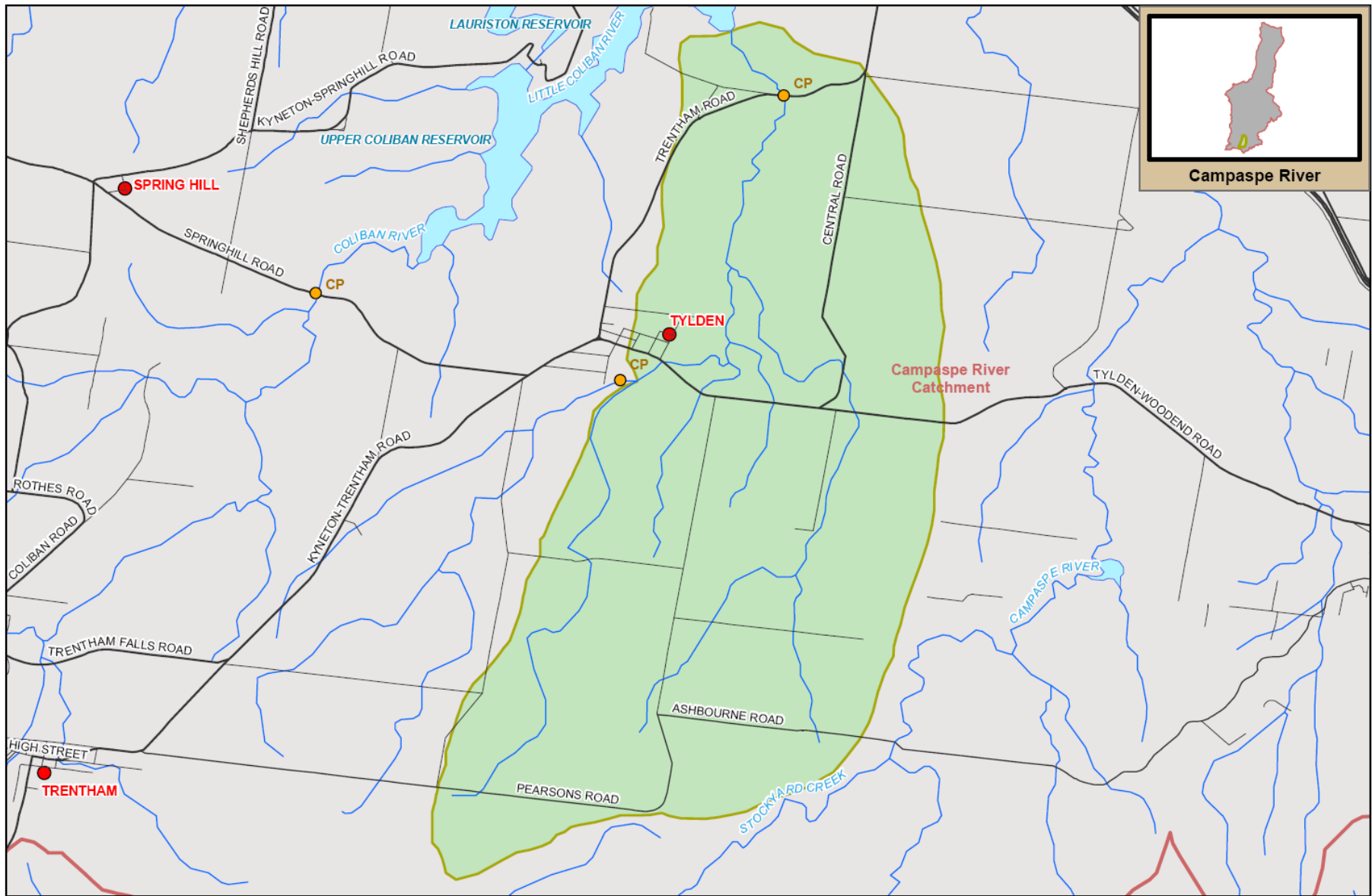
Stream codes used in the management of the Little Coliban River and Tributaries:
4060128

Sustainable Diversion Limit zones

Sustainable Diversion Limit zones used in the management of surface water trade within the Little Coliban River catchment:
4060102

For general information call or visit
1800 013 357

www.g-mwater.com.au



Campaspe River



TAT-AL09-0054
28 OCT 09

SCALE AT A4 1:80,000
0 1 2
km

LITTLE COLIBAN RIVER SUB CATCHMENT
Campaspe River Catchment

The content of this product is provided for information purposes only. No claim is made as to the accuracy of authenticity of the contents of the product. In no event will G-MW, its agents, instrumentals and employees be liable for the accuracy of the information contained within this product nor its use or reliance placed on it. The information used within this product is provided on the basis that all persons accessing the information undertake responsibility for assessing the relevance and accuracy of its content.

