

INDIGO CREEK CATCHMENT LOCAL MANAGEMENT RULES



1. Catchment Information

The Indigo Creek flows into the Murray River, 10 km downstream of Barnawartha, and encompasses an area of approximately 187 km². The mean annual flow at the bottom of the Indigo Creek catchment is approximately 21,500 ML/yr. The North East Regional River Health Strategy lists the River Murray Tributaries Management Unit as it contains significant environmental values, including Swampy Riparian Woodland and significant fauna. Key issues identified within the catchment are exotic flora, stock access, and degraded riparian vegetation.

The catchment is bound to the east by the Black Dog Creek catchment and the west by the Kiewa River catchment. Significant tributaries of Indigo Creek include Stockyard, Fryingpan, and Kookaburra Creeks. The main township within the catchment is Barnawartha. The Indigo Creek is an ephemeral stream, which flows from the hill country onto the highland plains and then onto the Murray floodplain, known as the Brown Plains. Land use in the catchment is predominantly dry land farming. The Chiltern-Mt Pilot National Park is situated in the west of the catchment, just to the east of Chiltern.

2. Management of Licences

Restriction Triggers for each stage of restriction.

Restriction Stages	Trigger Values for Introduction of Next Stage of Restriction	Percent Restrictable Demand
Stage 5 (Suspension)	<= 3 ML/Day	100%

Note: Restrictions are implemented during dry periods prior to flows reducing to the trigger value. For example, if a river flow is reducing rapidly, a higher stage or suspension will be put in place before the trigger level is reached to provide for adequate flow for domestic and stock use and the environment.

3. Compliance Point

The Indigo Creek is visually assessed, where the Murray Valley Highway crosses it, and is managed to 3 ML/Day.

4. Licences

Licence Allocation in Indigo Creek and Tributaries

Licence Type	Number of Licences	Volume (ML)
Irrigation	31	574
Registered Dams	19	282
Total	50	856

5. Additional Information

Stream codes and sustainable diversion limit zones are provided within this document for identification purposes when discussing the catchment diversion management with Goulburn-Murray Water Officers.

Stream Codes

Stream codes used in the management of the Indigo Creek and Tributaries:

4090236

Sustainable Diversion Limit zones

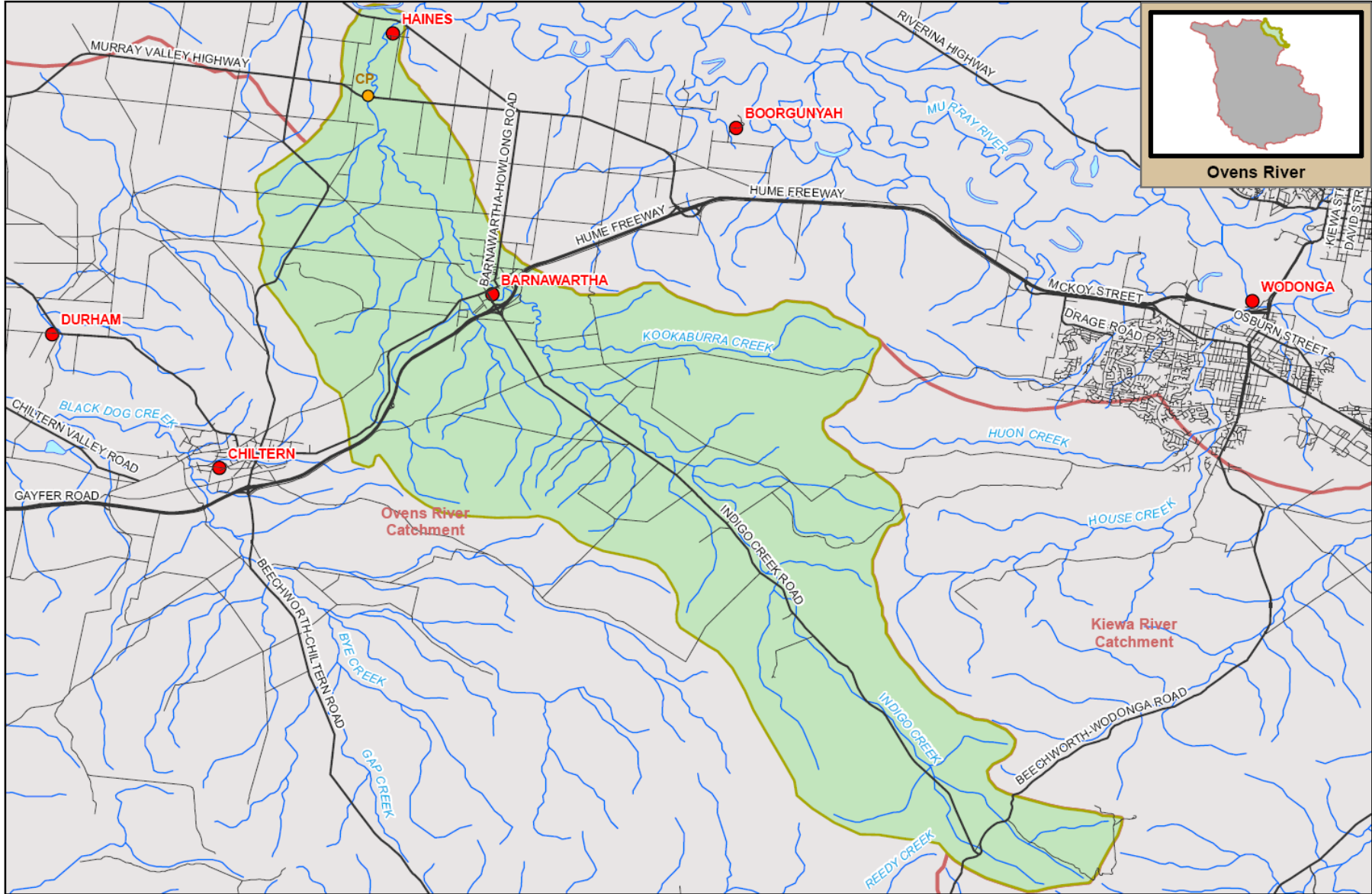
Sustainable Diversion Limit zones used in the management of surface water trade within the Indigo catchment:

4031101 4031102 4031103

For general information call or visit

1800 013 357

www.g-mwater.com.au



Ovens River



TAT-AL09-0054
28 OCT 09

SCALE AT A4 1:150,000
0 1 2 3 4 km

INDIGO CREEK SUB CATCHMENT
Ovens River Catchment

The content of this product is provided for information purposes only. No claim is made as to the accuracy or authenticity of the content of the product. In no event will G-MW, its agents, instrumentalities and employees be liable for the accuracy of the information contained within this product nor its use or reliance placed on it. The information used within this product is provided on the basis that all persons accessing the information undertake responsibility for assessing the relevance and accuracy of its content.

