

# HUGHES CREEK CATCHMENT LOCAL MANAGEMENT RULES



## 1. Catchment Information

The Hughes Creek joins the Goulburn River downstream of Lake Eildon and upstream of Goulburn Weir, near the township of Avenel and encompasses an area of

approximately 558 km<sup>2</sup>. The mean annual flow at the bottom of the catchment is approximately 88,200 ML/yr. The Hughes Creek Catchment is predominantly cleared with small pockets of natural bushland. Flows in the lower catchment of Hughes Creek are seasonal, with flow ceasing during dry periods. The Goulburn Broken Regional River Health Strategy lists the Hughes Creek as a high value asset as it contains Macquarie Perch and Murray Cod.

The catchment is bound to the south by the Goulburn River catchment and the east by the Home Creek. Significant tributaries of Hughes Creek include Ponkeen, County, Boundary, Woolshed, Stewarts, Buckland and Bunding Creek. The main townships within the catchment are Avenel and Ruffy. Within the catchment the predominant industry is dryland farming in the lower and middle catchment, and some intensive viticulture in the upper catchment.

## 2. Management of Licences

Restriction Triggers for each stage of restriction.

Restriction Stages	Trigger Values for Introduction of Next Stage of Restriction	Percent Restrictable Demand
Stage 5 (Suspension)	<=5 ML/day	100%

**Note:** Restrictions are implemented during dry periods prior to flows reducing to the trigger value. For example, if a river flow is reducing rapidly, a higher stage or suspension will be put in place before the trigger level is reached to provide for adequate flow for domestic and stock use and the environment.

## 3. Compliance Point

Hughes Creek is visually assessed at the Goulburn Valley Highway upstream of Avenel.

## 4. Licences

Licence Allocation in Hughes Creek and Tributaries

Licence Type	Number of Licences	Volume (ML)
Irrigation	21	1360.7
Registered Dams	56	960
<b>Total</b>	<b>77</b>	<b>2320.7</b>

## 5. Additional Information

Stream codes and sustainable diversion limit zones are provided within this document for identification purposes when discussing the catchment diversion management with Goulburn-Murray Water Officers.

### Stream Codes

Stream codes used in the management of the Hughes Creek and Tributaries.

4050236      4050206

### Sustainable Diversion Limit zones

Sustainable Diversion Limit zones used in the management of surface water trade within the Hughes catchment.

4051606, 4051605, 4051604, 4051603, 4051602, 4051601

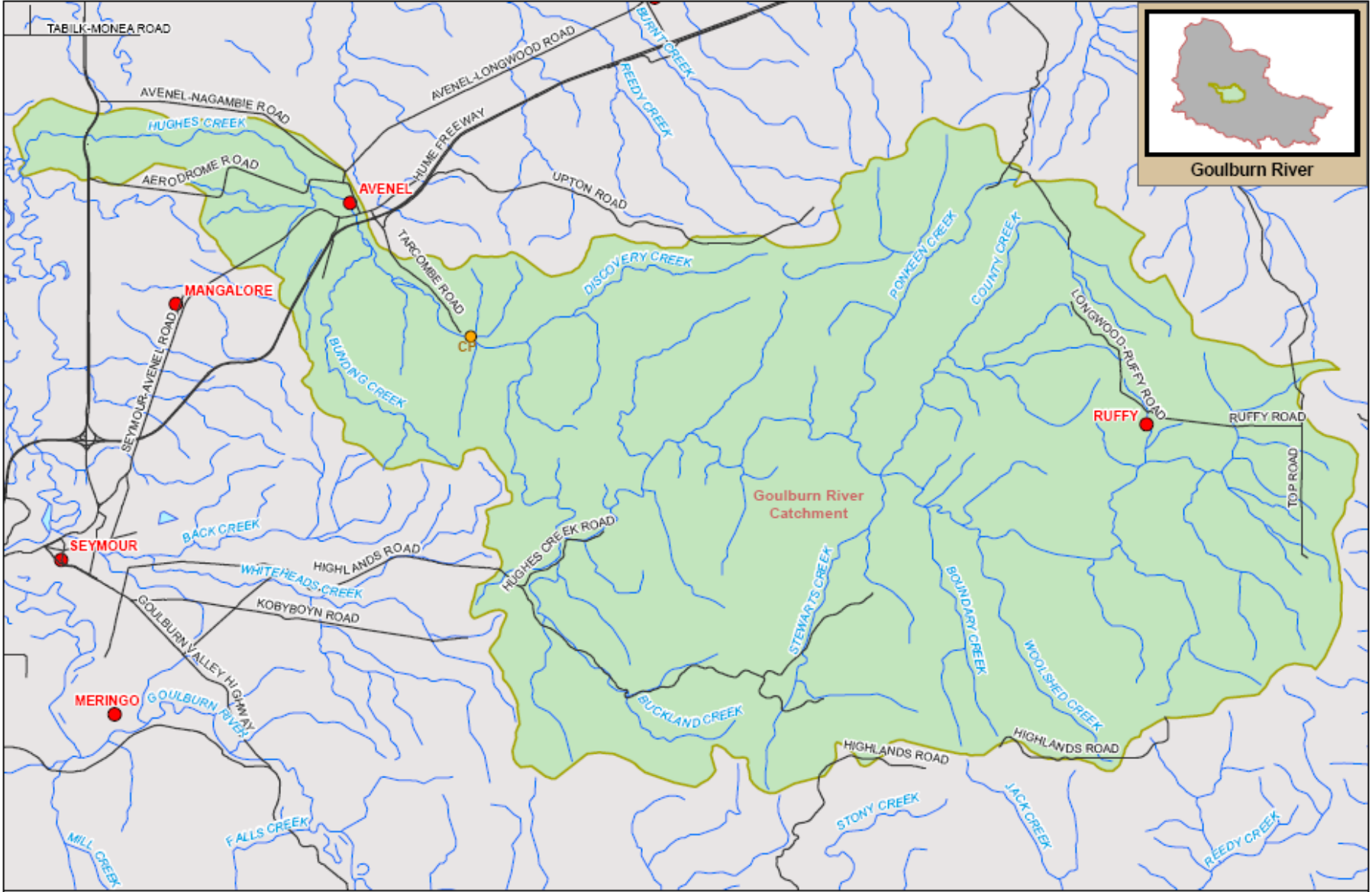
For general information call or visit

**1800 013 357**

**[www.g-mwater.com.au](http://www.g-mwater.com.au)**



Goulburn River



TAT-AL09-0064  
28 OCT 09



### HUGHES SUB CATCHMENT

Goulburn River Catchment

The content of this product is provided for information purposes only. No claim is made as to the accuracy or authenticity of the content of the product. In no event will GVMW, its agents, contractors and employees be liable for the accuracy of the information contained within this product or for its use or reliance placed on it. The information used within this product is provided on the basis that all persons accessing the information undertake responsibility for assessing the relevance and accuracy of its content.

