

HODGSON CREEK CATCHMENT LOCAL MANAGEMENT RULES



1. Catchment Information

The Hodgson Creek flows into Reedy Creek, 4 km east of Wangaratta, and encompasses an area of approximately 120 km². The mean annual flow at the bottom of the Hodgson Creek catchment is approximately 17,600 ML/yr. The North East Regional River Health Strategy lists the Middle Ovens River Tributaries Management Unit as it contains significant environmental values, including Murray Spiny Cray, Mountain Galaxias and Bluenose (Trout) Cod. Key issues identified within the catchment are exotic flora, stock access, channel deepening, loss of in-stream habitat, channelisation, degraded water quality, and cultivation.

The catchment is bound to the north by the Reedy Creek catchment and the south by the Ovens River catchment. Significant tributaries of Hodgson Creek include Sevens Oak, Stony, Yellow, Deadman, and Three Mile Creeks.

The catchment has been predominantly cleared with dryland farming, apples, and chestnuts being the main industries in the catchment.

2. Management of Licences

Restriction Triggers for each stage of restriction.

Restriction Stages	Trigger Values for Introduction of Next Stage of Restriction	Percent Restrictable Demand
Stage 5 (Suspension)	<=3 ML/day	100%

Note: Restrictions are implemented during dry periods prior to flows reducing to the trigger value. For example, if a river flow is reducing rapidly, a higher stage or suspension will be put in place before the trigger level is reached to provide for adequate flow for domestic and stock use and the environment.

3. Compliance Point

The stream is visually assessed at Voights Bridge which is within the upper catchment, downstream of Deadmans Creek junction.

4. Licences

Licence Allocation in Hodgson Creek and Tributaries

Licence Type	Number of Licences	Volume (ML)
Irrigation	27	416.7
Registered Dams	34	324
Total	61	740.7

5. Additional Information

Stream codes and sustainable diversion limit zones are provided within this document for identification purposes when discussing the catchment diversion management with Goulburn-Murray Water Officers.

Stream Codes

Stream codes used in the management of the Hodgson Creek and Tributaries:
4030315

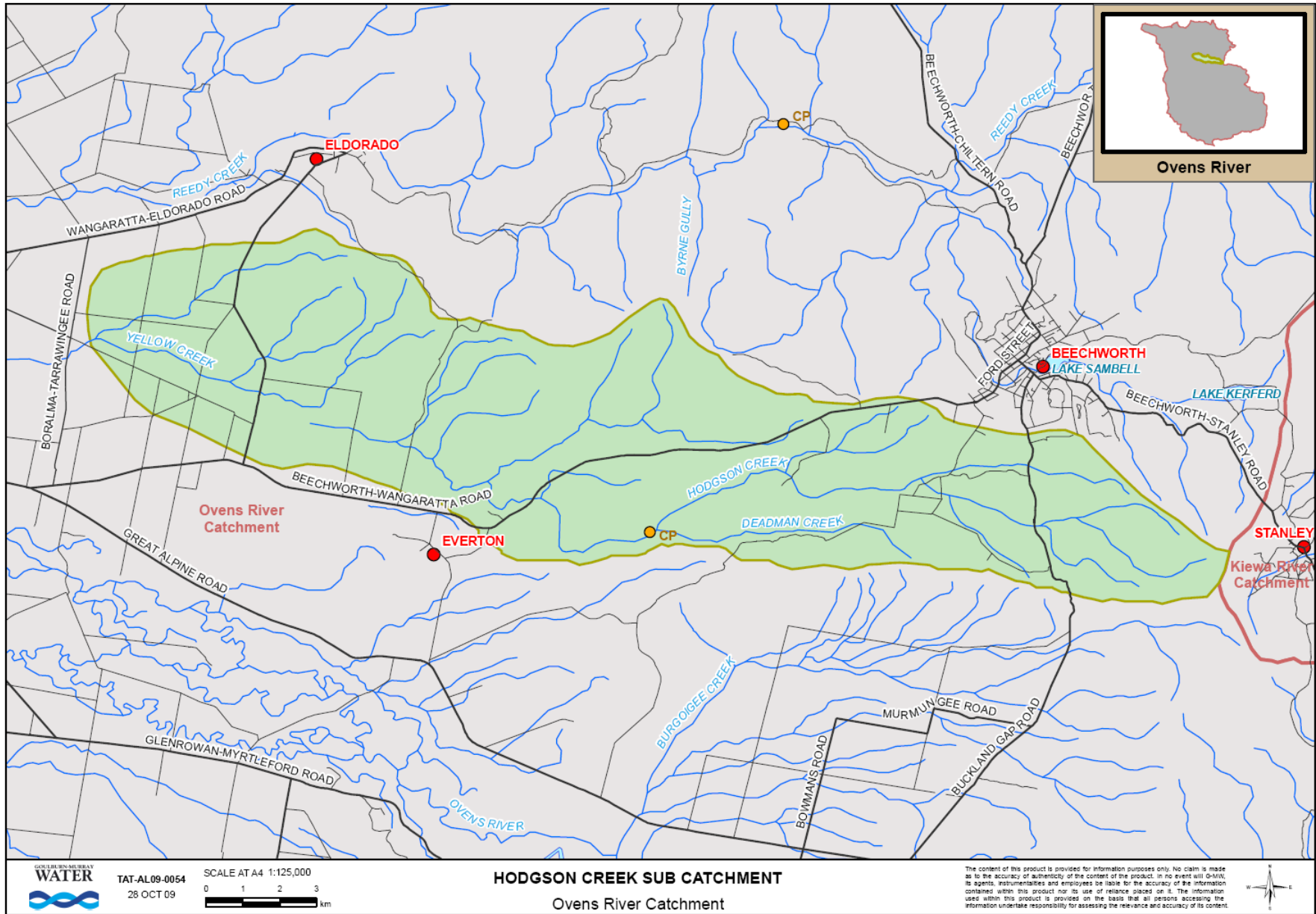
Sustainable Diversion Limit zones

Sustainable Diversion Limit zones used in the management of surface water trade within the Hodgson catchment:
4030601 4030602

For general information call or visit

1800 013 357

www.g-mwater.com.au



TAT-AL09-0054
28 OCT 09

SCALE AT A4 1:125,000
0 1 2 3 km

HODGSON CREEK SUB CATCHMENT
Ovens River Catchment

The content of this product is provided for information purposes only. No claim is made as to the accuracy or authenticity of the content of the product. In no event will G-Water, its agents, instrumentals and employees be liable for the accuracy of the information contained within this product nor its use of reliance placed on it. The information used within this product is provided on the basis that all persons accessing the information undertake responsibility for assessing the relevance and accuracy of its content.

