

EMU CREEK CATCHMENT LOCAL MANAGEMENT RULES



1. Catchment Information

The Emu Creek flows into Sheepwash Creek at Strathfieldsaye and encompasses an area of around 49 km². Annual average catchment flow is approximately 1780 ML/yr. The Emu Creek catchment is predominantly cleared along the creek valley and supports dryland farming and rural residential properties. The forested area in the western region of the catchment is covered by the Greater Bendigo National Park.

The catchment is bound to the west by the Loddon River catchment and the east by the Axe Creek catchment. The main townships within the catchment are Sedgwick and Strathfieldsaye.

2. Management of Licences

Restriction Triggers for each stage of restriction.

Restriction Stages	Trigger Values for Introduction of Next Stage of Restriction	Percent Restrictable Demand
Stage 5 (Suspension)	<=3 ML/day	100%

Note: Restrictions are implemented during dry periods prior to flows reducing to the trigger value. For example, if a river flow is reducing rapidly, a higher stage or suspension will be put in place before the trigger level is reached to provide for adequate flow for domestic and stock use and the environment.

3. Compliance Point

The creek is visually monitored to 3ML/day at the Strathfieldsaye Road, upstream of the junction with Sheepwash Creek.

4. Licences

Licence Allocation in Emu Creek and Tributaries

Licence Type	Number of Licences	Volume (ML)
Irrigation	7	93.2
Registered Dams	20	283
Total	27	376.2

5. Additional Information

Stream codes and sustainable diversion limit zones are provided within this document for identification purposes when discussing the catchment diversion management with Goulburn-Murray Water Officers.

Stream Codes

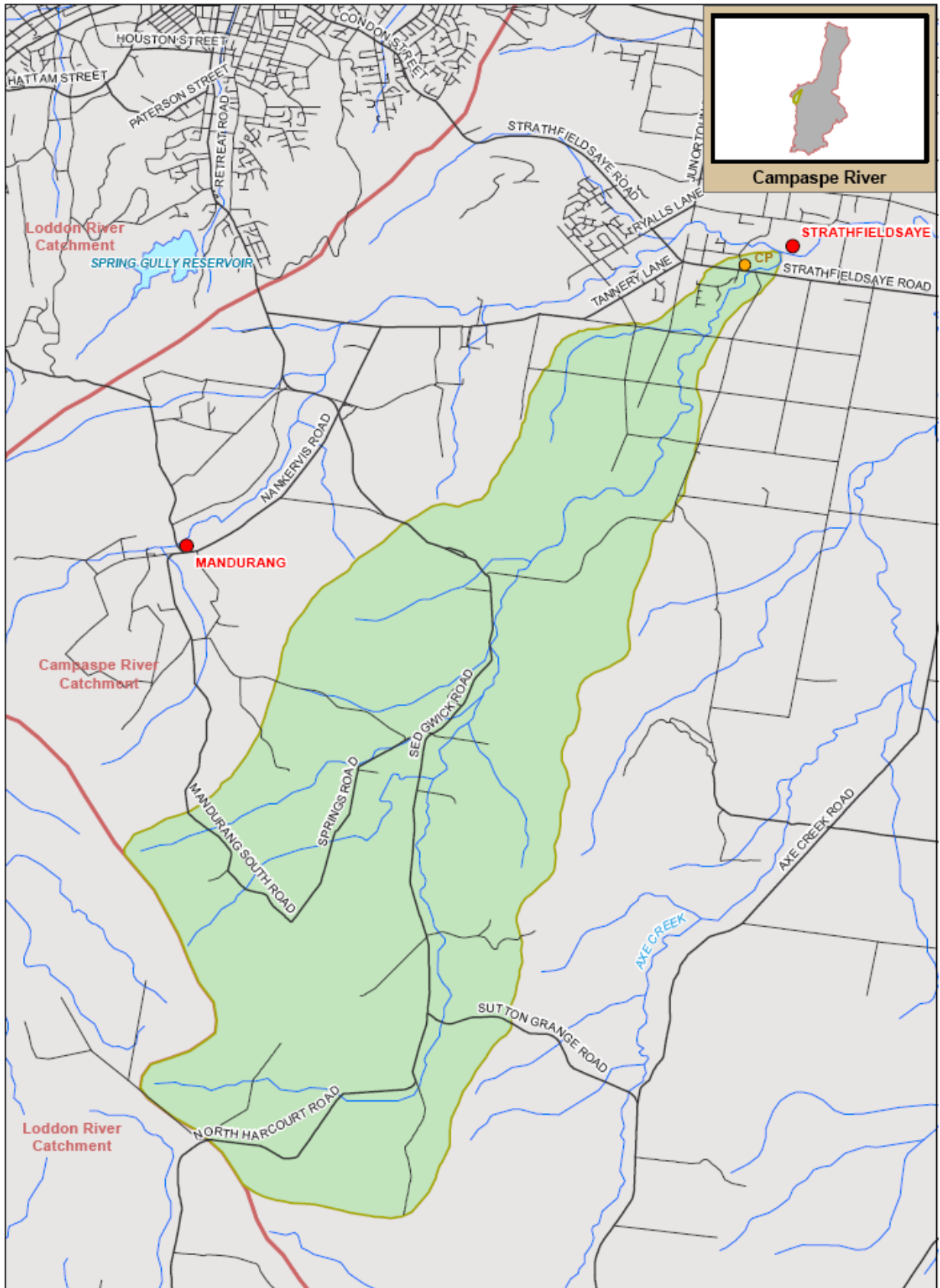
Stream codes used in the management of the Emu Creek and Tributaries.
4060220

Sustainable Diversion Limit zones

Sustainable Diversion Limit zones used in the management of surface water trade within the Emu Creek catchment.
4060304

For general information call or visit
1800 013 357

www.g-mwater.com.au



Campaspe River

EMU CREEK SUB CATCHMENT



SCALE AT A4 1:75,000
TAT-AL09-0054
 28 OCT 09

Campaspe River Catchment



The content of this product is provided for information purposes only. No claim is made as to the accuracy or authority of the content of the product. In no event will GWM, its agents, subcontractors and employees be liable for the accuracy of the information contained within this product nor its use of reliance placed on it. The information used within this product is provided on the basis that all persons accessing the information undertake responsibility for assessing the relevance and accuracy of its content.

