

# CUDGEWA CREEK CATCHMENT LOCAL MANAGEMENT RULES



## 1. Catchment Information

The Cudgewa Creek flows into the Murray River approximately 2km downstream of Tintalra, and encompasses an area of approximately 825 km<sup>2</sup>. The mean annual flow at the bottom of the Cudgewa Creek catchment is approximately 223,150 ML/yr. The North East Regional River Health Strategy lists the Walwa, Sandy and Cudgewa Creeks Management Unit as it contains significant environmental values, including Murray Cod, Mountain Galaxias and Bluenose Cod. Key issues identified within the catchment are exotic flora, stock access, degradation of riparian vegetation, degraded water quality and bed and bank erosion.

The catchment is bound to the east by the Corryong Creek catchment and the west by the Murray River catchment. Significant tributaries of the Cudgewa Creek include Stony, Keelangie, Wabba, Log Bridge, Newmans, Lucyvale, Reedy and Lucky Hit Creeks. The main townships within the catchment are Beetoomba and Cudgewa. The catchment is predominantly forested in the upper catchments, and is covered by the Wabba Wilderness Park and the Burrowa Pine Mountain National Park. Agriculture is extensive in the valley floors of the Cudgewa Creek and its tributaries, with industries including dairy, dryland farming, and pine plantations.

## 2. Licences

Licence Allocation in Cudgewa Creek and Tributaries

Licence Type	Number of Licences	Volume (ML)
Irrigation	34	545.2
Registered Dams	31	305
<b>Total</b>	<b>65</b>	<b>850.2</b>

## 3. Management of Licences

Restriction Triggers for each stage of restriction.

Restriction Stages	Trigger Values for Introduction of Next Stage of Restriction	Percent Restrictable Demand
Stage 1 (Roster)	50 ML/day	0%
Stage 2	40 ML/day	25%
Stage 3	30 ML/day	50%
Stage 4	20 ML/day	75%
Stage 5 (Suspension)	<=10 ML/day	100%

**Note:** Restrictions are implemented during dry periods prior to flows reducing to the trigger value. For example, if a river flow is reducing rapidly, a higher stage or suspension will be put in place before the trigger level is reached to provide for adequate flow for domestic and stock use and the environment.

## 4. Compliance Point

There is a surface water monitoring station located on Cudgewa Creek approximately 6km upstream of its junction with the Murray River. The station is called Cudgewa Creek @ Cudgewa North (Station No. 401229).

## 5. Additional Information

Stream codes and sustainable diversion limit zones are provided within this document for identification purposes when discussing the catchment diversion management with Goulburn-Murray Water Officers.

### Stream Codes

Stream codes used in the management of the Cudgewa Creek and Tributaries: 4015116, 4015164, 4015176

### Sustainable Diversion Limit zones

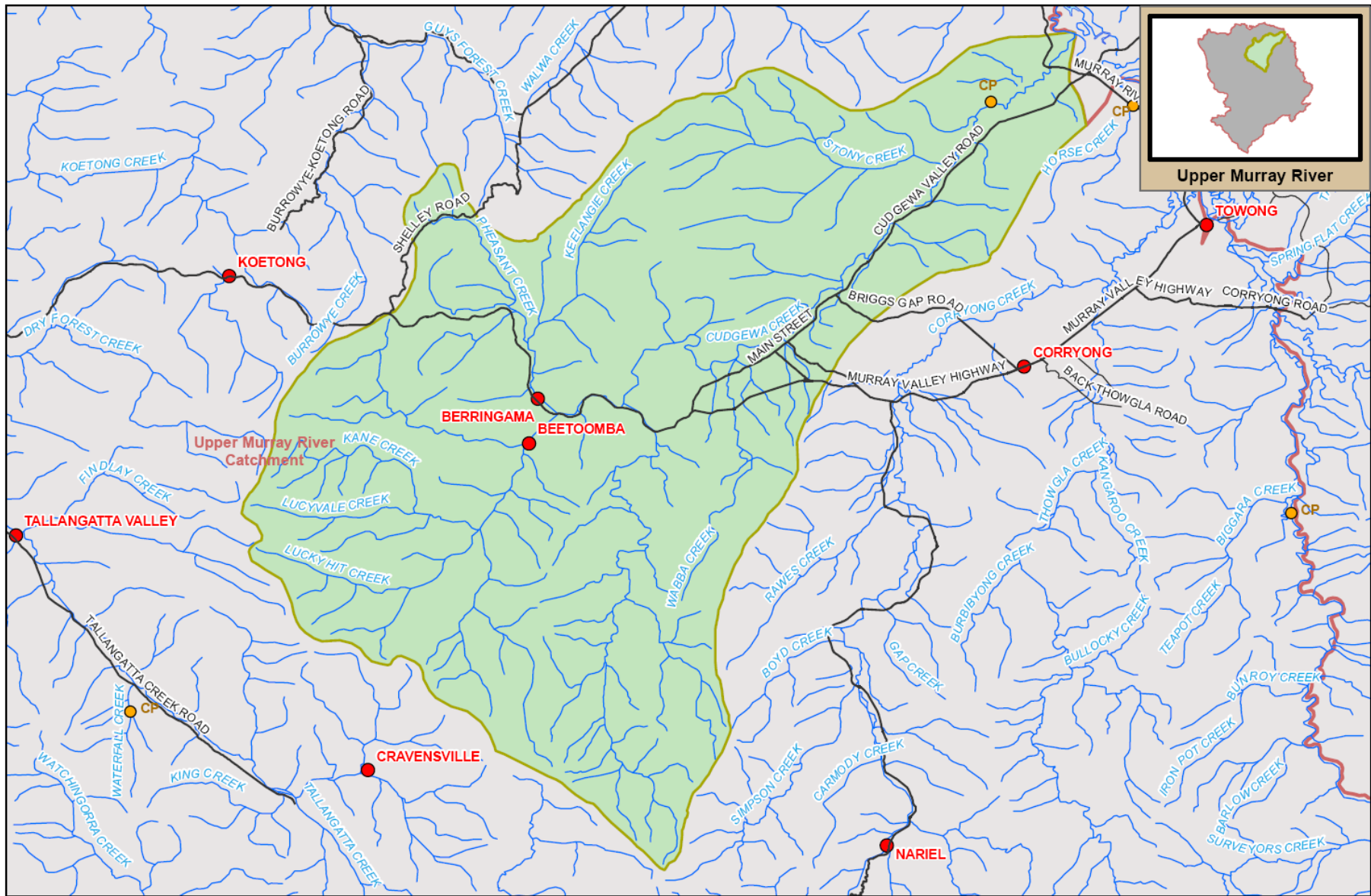
Sustainable Diversion Limit zones used in the management of surface water trade within the Cudgewa catchment:

4010601, 4010602, 4010603, 4010604, 4010605, 4010606, 4010607, 4010608, 4010609

For general information call or visit

**1800 013 357**

**www.g-mwater.com.au**



Upper Murray River



TAT-AL09-0054  
28 OCT 09

SCALE AT A4 1:270,000  
0 1 2 3 4 5  
km

**CUDGEWA CREEK SUB CATCHMENT**  
Upper Murray River Catchment

The content of this product is provided for information purposes only. No claim is made as to the accuracy of the content of the product. In no event will G-MW, its agents, instrumentals and employees be liable for the accuracy of the information contained within this product nor its use or reliance placed on it. The information used within this product is provided on the basis that all persons accessing the information undertake responsibility for assessing the relevance and accuracy of its content.

