

COLIBAN RIVER CATCHMENT LOCAL MANAGEMENT RULES



1. Catchment Information

The Coliban River flows into the Upper Coliban Reservoir, and encompasses an area of approximately 102 km². The mean annual flow at the bottom of the Coliban River catchment is approximately 26,410 ML/yr. The North Central River Health Strategy lists the Coliban River reach as it contains significant environmental values including significant flora, invertebrates and is considered to be in a 'near ecologically healthy condition'. Key issues identified within the catchment are exotic flora, stock access, water quality, degraded riparian vegetation and introduced fauna.

The catchment is bound to the east by the Campaspe River catchment and the west by the Kangaroo Creek catchment. Significant tributaries of Coliban River include Daniels, Gills, Blue, Comino, and Stony Creeks. The main townships within the catchment are Trentham and Tylden. The catchment is predominantly forested in the upper and lower catchment and is covered by the Coliban 19 Bushland Reserve and the Coliban River Scenic Reserve. The middle of the catchment is predominantly cleared and supports dryland farming.

2. Management of Licences

Restriction Triggers for each stage of restriction.

| Restriction Stages | Trigger Values for Introduction of Next Stage of Restriction | Percent Restrictable Demand |
|----------------------|--|-----------------------------|
| Stage 5 (Suspension) | <= 2 ML/Day | 100% |

Note: Restrictions are implemented during dry periods prior to flows reducing to the trigger value. For example, if a river flow is reducing rapidly, a higher stage or suspension will be put in place before the trigger level is reached to provide for adequate flow for domestic and stock use and the environment.

3. Compliance Point

The Coliban River is visually monitored at Trentham.

4. Licences

Licence Allocation in Coliban River upstream Eppalock Creek and Tributaries

| Licence Type | Number of Licences | Volume (ML) |
|-----------------|--------------------|-------------|
| Irrigation | 32 | 202 |
| Registered Dams | 55 | 1073 |
| Total | 87 | 1275 |

5. Additional Information

Stream codes and sustainable diversion limit zones are provided within this document for identification purposes when discussing the catchment diversion management with Goulburn-Murray Water Officers.

Stream Codes

Stream codes used in the management of the Coliban River and Tributaries:

4060164 4060108

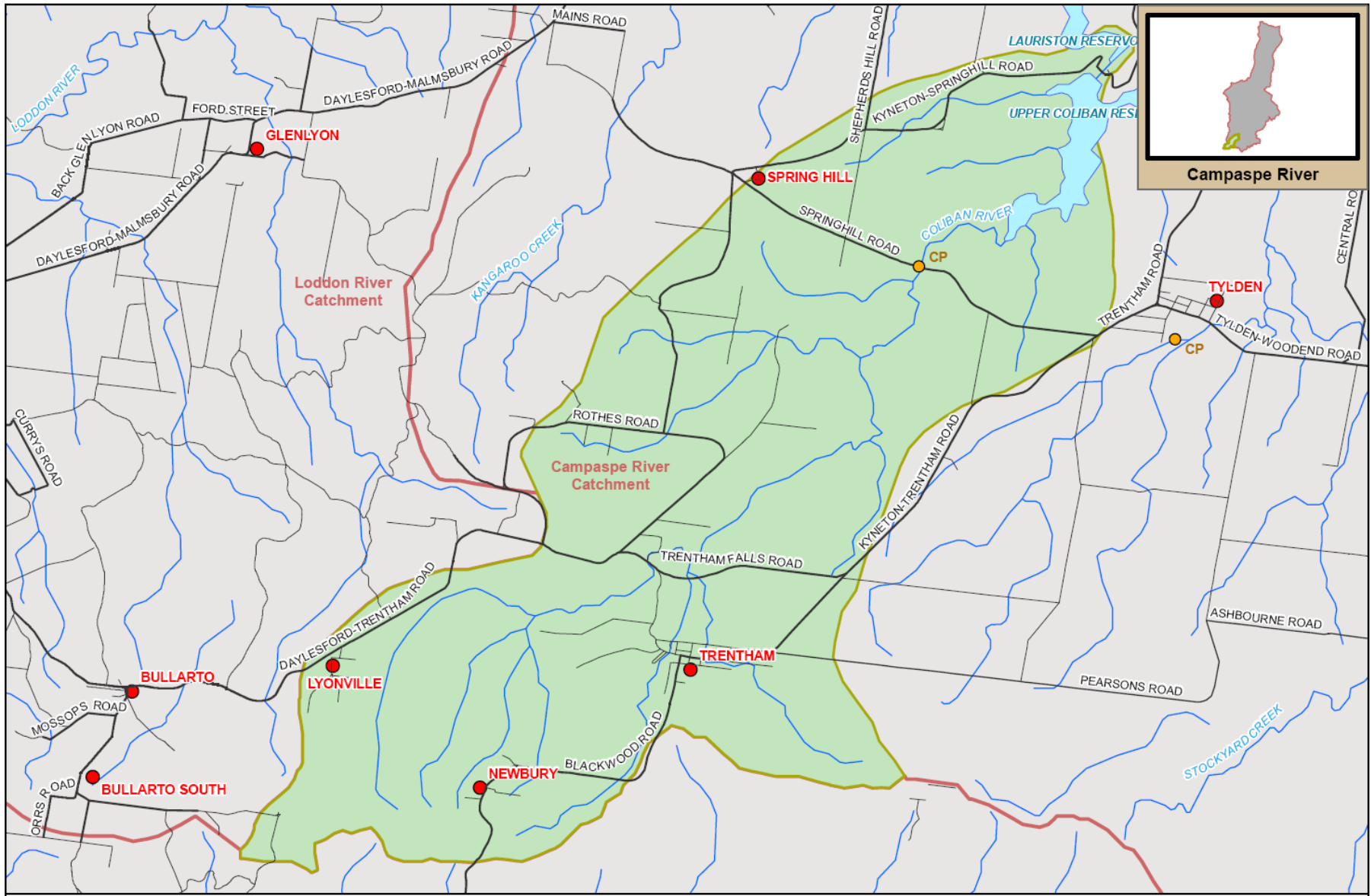
Sustainable Diversion Limit zones

Sustainable Diversion Limit zones used in the management of surface water trade within the Coliban River catchment:

4060101 4060103

For general information call or visit
1800 013 357

www.g-mwater.com.au



Campaspe River



TAT-AL09-0054
28 OCT 09

SCALE AT A4 1:95,000
0 1 2
km

COLIBAN RIVER SUB CATCHMENT
Campaspe River Catchment

The content of this product is provided for information purposes only. No claim is made as to the accuracy or authenticity of the content of the product. In no event will G-MW, its agents, instrumentalities and employees be liable for the accuracy of the information contained within this product nor its use of reliance placed on it. The information used within this product is provided on the basis that all persons accessing the information undertake responsibility for assessing the relevance and accuracy of its content.

