

CAMPASPE RIVER MAIN STEM UPSTREAM EPPALOCK LOCAL MANAGEMENT RULES



1. Catchment Information

The Campaspe River flows into Lake Eppalock approximately 5km downstream of Redesdale, and encompasses an area of approximately 633 km². The mean annual flow at the bottom of the Campaspe River upstream Eppalock catchment is approximately 80,330 ML/yr. The North Central River Health Strategy lists the Campaspe River reach as it contains significant environmental values, including Murray Cod, Golden Perch and is considered to be in a near ecologically healthy condition. Key issues identified within the catchment are exotic flora, stock access, water quality, degraded riparian vegetation and introduced fauna.

The catchment is bound to the east by the Goulburn River catchment and the west by the Coliban River catchment. Significant tributaries of Campaspe River upstream Eppalock include Back, Black, Pipers, Stone Jug, Five Mile, Jews Harp, Falls and Ritchies Creeks. The main towns within the catchment include Redesdale, Kyneton and Woodend. It is a predominantly cleared catchment with small bushland reserves scattered through the catchment. These reserves include the Edgecombe Streamside Reserve and the Emberton Bushland Reserve. Industry in the catchment includes dryland farming, some viticulture and tourism.

2. Management of Licences

Restriction Triggers for each stage of restriction.

Restriction Stages	Trigger Values for Introduction of Next Stage of Restriction	Percent Restrictable Demand
Stage 5 (Suspension)	<= 5 ML/Day	100%

Note: Restrictions are implemented during dry periods prior to flows reducing to the trigger value. For example, if a river flow is reducing rapidly, a higher stage or suspension will be put in place before the trigger level is reached to provide for adequate flow for domestic and stock use and the environment.

3. Compliance Point

The Campaspe River main stem upstream of Eppalock is assessed at the gauging station Campaspe River @ Redesdale.

4. Licences

Licence Allocation in Campaspe River upstream Eppalock Creek and Tributaries

Licence Type	Number of Licences	Volume (ML)
Irrigation	28	172.7
Registered Dams	67	944.4
Total	92	1117.1

5. Additional Information

Stream codes and sustainable diversion limit zones are provided within this document for identification purposes when discussing the catchment diversion management with Goulburn-Murray Water Officers.

Stream Codes

Stream codes used in the management of the Campaspe River upstream Eppalock Creek and Tributaries:

4060100 4060184

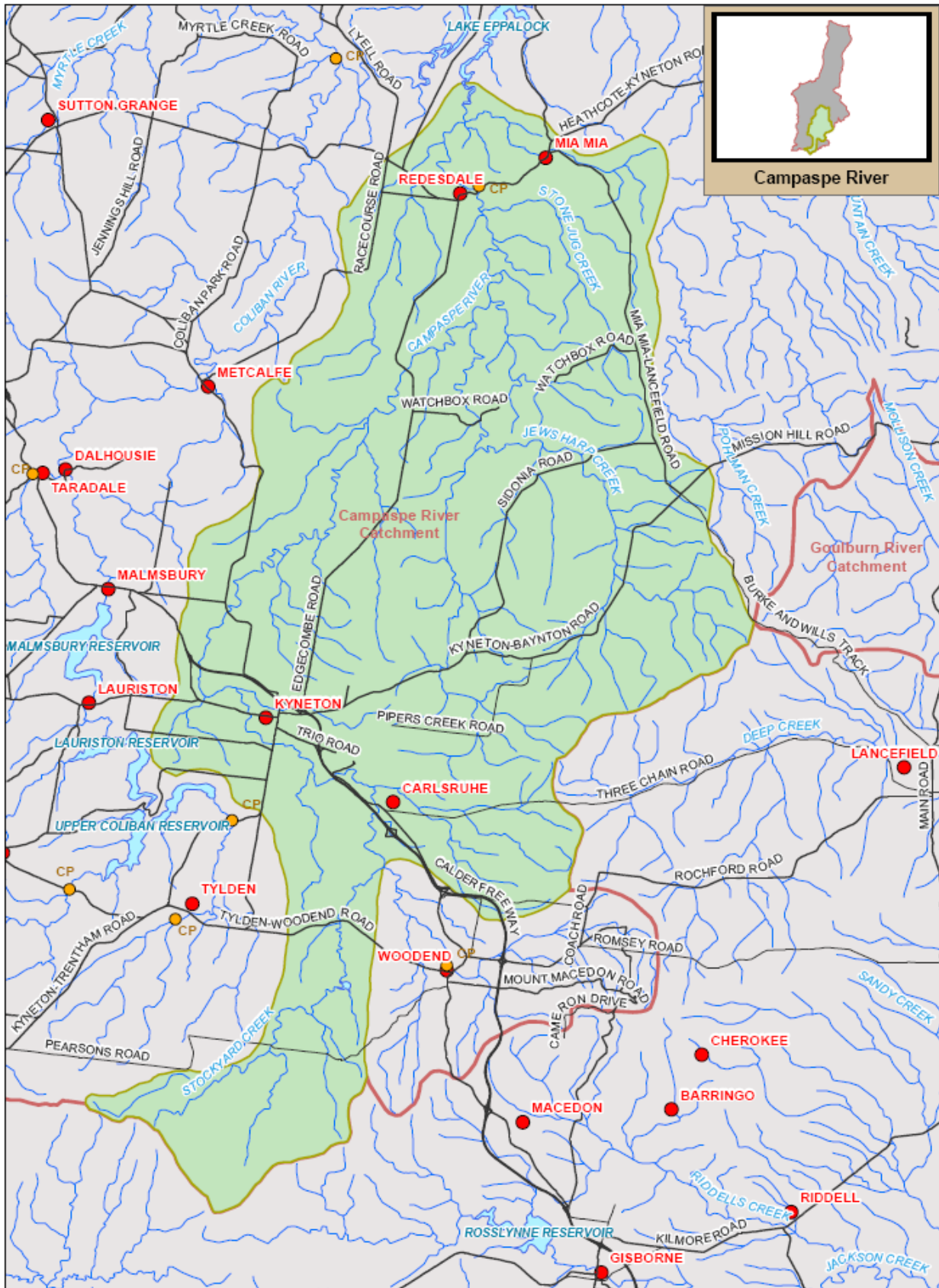
Sustainable Diversion Limit zones

Sustainable Diversion Limit zones used in the management of surface water trade within the Campaspe River upstream Eppalock Creek catchment: 4060008, 4060007, 4060006, 4060005, 4060004, 4060003, 4060001

For general information call or visit

1800 013 357

www.g-mwater.com.au



CAMPASPE RIVER U/S EPPALOCK SUB CATCHMENT



SCALE AT A4 1:235,000
 TAT-AL09-0054
 28 OCT 09

Campaspe River Catchment



The content of this product is provided for information purposes only. No claim is made as to the accuracy or authenticity of the content of the product. In no event will GWMA, its agents, instrumentalities and employees be liable for the accuracy of the information contained within this product nor its use or reliance placed on it. The information used within this product is provided on the basis that all persons accessing the information undertake responsibility for assessing the relevance and accuracy of its content.

