

BARKERS CREEK CATCHMENT LOCAL MANAGEMENT RULES



1. Catchment Information

The Barkers Creek flows into Campbells Creek in Castlemaine, and encompasses an area of approximately 102 km². The mean annual flow at the bottom of the Barkers Creek catchment is approximately 7,440 ML/yr. Barkers Creek Reservoir is situated in the upper catchment, north of Harcourt. The reservoir is a holding basin within the Coliban Water rural supply system, and holds water supplied from the Coliban rural channel system from the Coliban Headwork's Storages (Malmsbury, Lauriston and Upper Coliban Reservoirs). As the Reservoir is a holding basin, Coliban Water do not have to undertake controlled releases under their Bulk Entitlement obligations.

The North Central River Health Strategy lists the Upper Loddon Program Area including Barkers Creek as a priority reach as it contains significant fauna and wetland rarity. Key issues identified within the catchment are instream barriers, exotic flora, stock access, water quality, loss of instream habitat and introduced fauna.

The catchment is bound to the east by the Campaspe River catchment and the west by the Loddon River catchment. Significant tributaries of Barkers Creek include Forest and Wattle Creeks. The main townships within the catchment include Castlemaine and Harcourt. The Barkers Creek catchment predominantly forested throughout the hills and is covered by the Castlemaine Diggings National Heritage Park, Harcourt Bushland Reserve and the Castlemaine Bushland Reserve.

2. Compliance Point

Barkers Creek is visually assessed to 3 ML/Day at Castlemaine.

3. Management of Licences

Restriction Triggers for each stage of restriction.

Restriction Stages	Trigger Values for Introduction of Next Stage of Restriction	Percent Restrictable Demand
Stage 5 (Suspension)	<=3 ML/Day	100%

Note: Restrictions are implemented during dry periods prior to flows reducing to the trigger value. For example, if a river flow is reducing rapidly, a higher stage or suspension will be put in place before the trigger level is reached to provide for adequate flow for domestic and stock use and the environment.

4. Licences

Licence Allocation in Barkers Creek and Tributaries

Licence Type	Number of Licences	Volume (ML)
Irrigation	13	56.4
Registration	35	606
Total	48	662.4

5. Additional Information

Stream codes and sustainable diversion limit zones are provided within this document for identification purposes when discussing the catchment diversion management with Goulburn-Murray Water Officers.

Stream Codes

Stream codes used in the management of the Barkers Creek and Tributaries:

4071104 4071128

Sustainable Diversion Limit zones

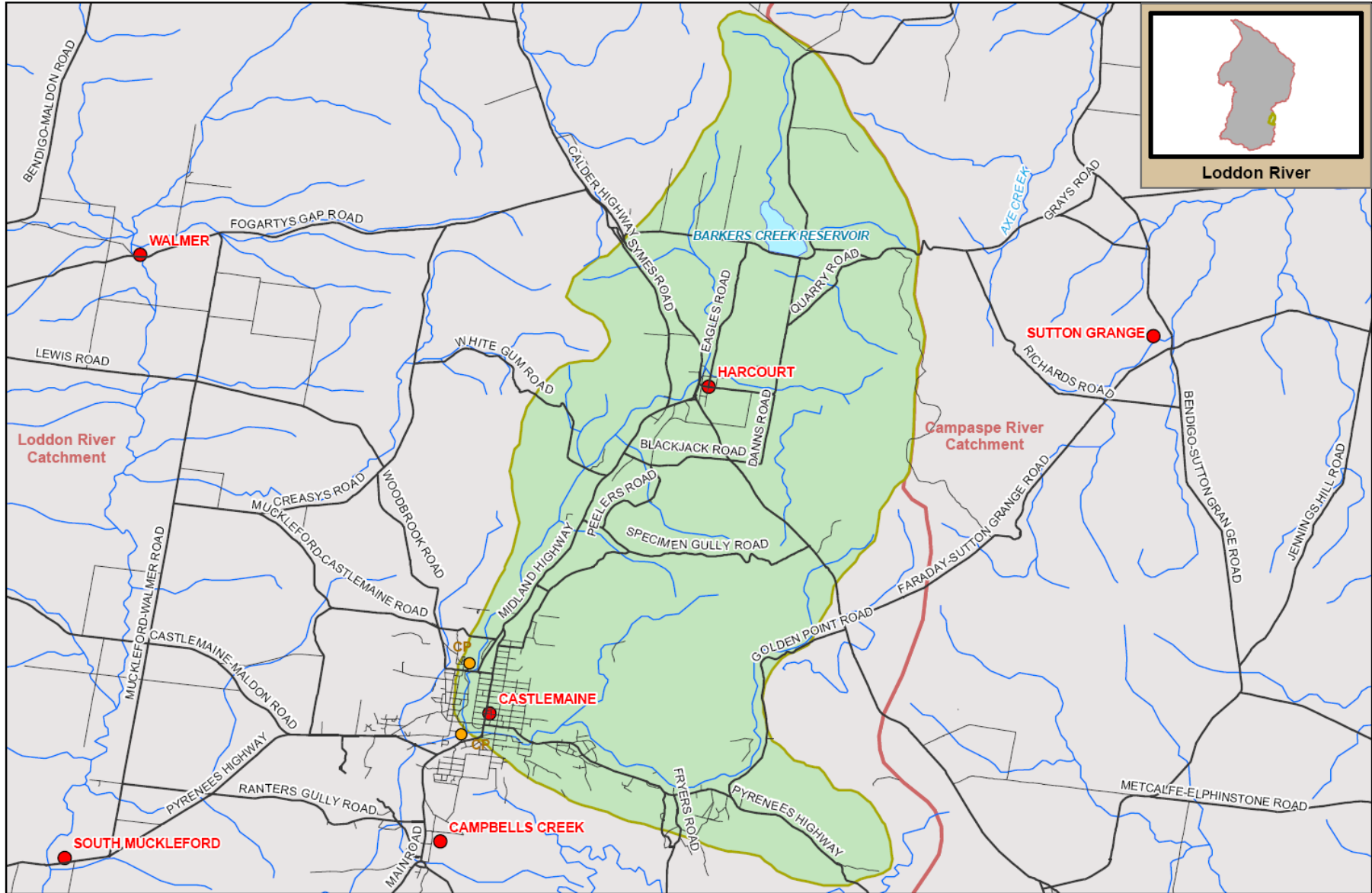
Sustainable Diversion Limit zones used in the management of surface water trade within the Barkers Creek catchment:

4070003

For general information call or visit

1800 013 357

www.g-mwater.com.au



Loddon River



TAT-AL09-0054
28 OCT 09

SCALE AT A4 1:110,000
0 1 2 km

BARKERS CREEK SUB CATCHMENT
Loddon River Catchment

The content of this product is provided for information purposes only. No claim is made as to the accuracy or authenticity of the contents of the product. In no event will G-MW, its agents, instrumentaries and employees be liable for the accuracy of the information contained within this product nor its use or reliance placed on it. The information used within this product is provided on the basis that all persons accessing the information undertake responsibility for assessing the relevance and accuracy of its content.

