

BACK CREEK CATCHMENT (TRIB OF YACKANDANDAH CREEK) LOCAL MANAGEMENT RULES



1. Catchment Information

The Back Creek flows into the Yackandandah Creek approximately 2 km downstream of Yackandandah and encompasses an area of approximately 21 km². The mean annual flow out of the Back Creek catchment is approximately 3,830 ML/year. The North East Regional River Health Strategy lists the Lower Kiewa River tributaries as high value assets as they contain Mountain Galaxias. Key issues identified are stock access to the creeks, exotic flora, degraded riparian vegetation, bed instability, bank erosion, water quality and loss of stream habitat.

The catchment is bound to the west by the Ovens River catchment and the east by the Kiewa River catchment. Significant tributaries of Back Creek include Stringer and Marcum Creeks. The Back Creek Catchment is predominantly cleared within the lower and middle catchments and supports dryland farming and the dairy industries.

2. Management of Licences

Restriction Triggers for each stage of restriction.

Restriction Stages	Trigger Values for Introduction of Next Stage of Restriction	Percent Restrictable Demand
Stage 5 (Suspension)	<=2 ML/day	100%

Note: Restrictions are implemented during dry periods prior to flows reducing to the trigger value. For example, if a river flow is reducing rapidly, a higher stage or suspension will be put in place before the trigger level is reached to provide for adequate flow for domestic and stock use and the environment.

3. Compliance Point

The Back Creek is visually assessed above McIntoch Dam to maintain a flow of 2 ML/day or more.

4. Licences

Licence Allocation in Back Creek and Tributaries

Licence Type	Number of Licences	Volume (ML)
Irrigation	2	204
Total	2	204

5. Additional Information

Stream codes and sustainable diversion limit zones are provided within this document for identification purposes when discussing the catchment diversion management with Goulburn-Murray Water Officers.

Stream Codes

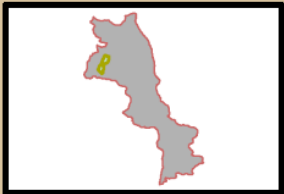
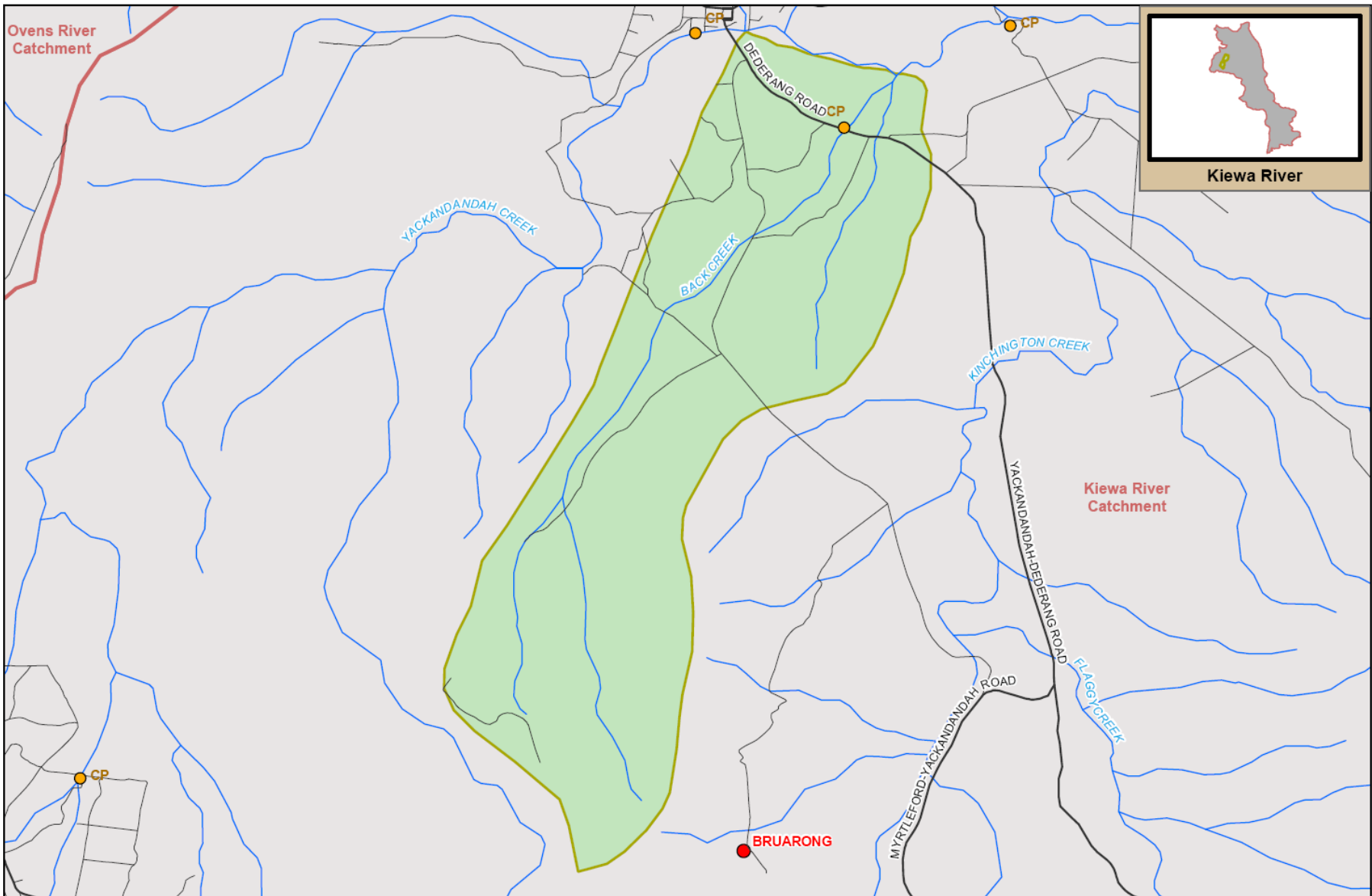
Stream codes used in the management of the Back Creek and Tributaries:
4020104

Sustainable Diversion Limit zones

Sustainable Diversion Limit zones used in the management of surface water trade within the Back catchment:
4020405

For general information call or visit
1800 013 357

www.g-mwater.com.au

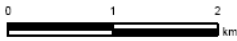


Kiewa River



TAT-AL09-0054
28 OCT 09

SCALE AT A4 1:60,000



BACK CREEK SUB CATCHMENT
Kiewa River Catchment

The content of this product is provided for information purposes only. No claim is made as to the accuracy or authenticity of the content of the product. In no event will G-MW, its agents, instrumentalities and employees be liable for the accuracy of the information contained within this product nor its use or reliance placed on it. The information used within this product is provided on the basis that all persons accessing the information undertake responsibility for assessing the relevance and accuracy of its content.

