

Broken Groundwater Management Area

The Broken Groundwater Management Area (GMA) extends from the upper catchment near Mansfield, north to Tungamah and incorporates the towns of Benalla, Glenrowan and Dookie (shown on map overleaf).

Groundwater resources

Groundwater resources within the Broken GMA occur in either fractured bedrock aquifers, shallow shoestring sands of the Shepparton Formation or deep gravels and sands of the Deep Lead. Charts showing groundwater levels and rainfall are provided overleaf.

In 2017/18 groundwater levels in the Shepparton Formation aquifer continued to fluctuate in response to climatic conditions.

The Deep Lead and bedrock aquifers continue to follow a steadily rising trend.

Groundwater licensed volume and use

There is currently 2,801.4 megalitres per year (ML/yr) of groundwater licensed volume in the Broken GMA (Table 1). Licensed volume in the Broken GMA is limited by a permissible consumptive volume (PCV) of 3,732.0 ML.

Table 1 Licensed volume, PCV and recorded use in the Broken GMA

Management zone	Zone Cap/ PCV (ML)	Licensed volume (ML/yr)	Recorded use (ML)
Broken Sedimentary Plains	No Limit	961.4	87.2
Broken Highlands	No limit	1,840.0	390.4
Total	3,732.0	2,801.4	477.6

Recorded use in the Broken GMA in 2017/18 was 477.6 ML which is 17% of total licensed volume (Table 1).

Despite 2017/18 being drier than average, groundwater use only increased by 3% in the Broken GMA compared to 2016/17 (Figure 1).

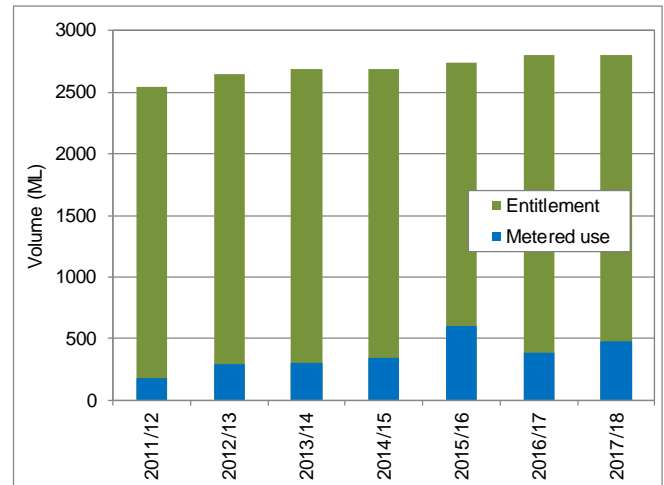


Figure 1 Annual recorded use as a proportion of licensed volume in the Broken GMA

Groundwater trading

Licence holders may transfer licensed volume on a temporary or permanent basis within or between management zones in the Broken GMA and other Groundwater Management Units, provided that it accords with rules outlined in the Local Management Plan.

No trades occurred in 2017/18.

Looking to buy or sell licensed volume?

Watermatch is an online forum where licence holders can advertise their interest to buy or sell licensed volume; either groundwater or unregulated surface water.

Visit www.watermatch.com.au

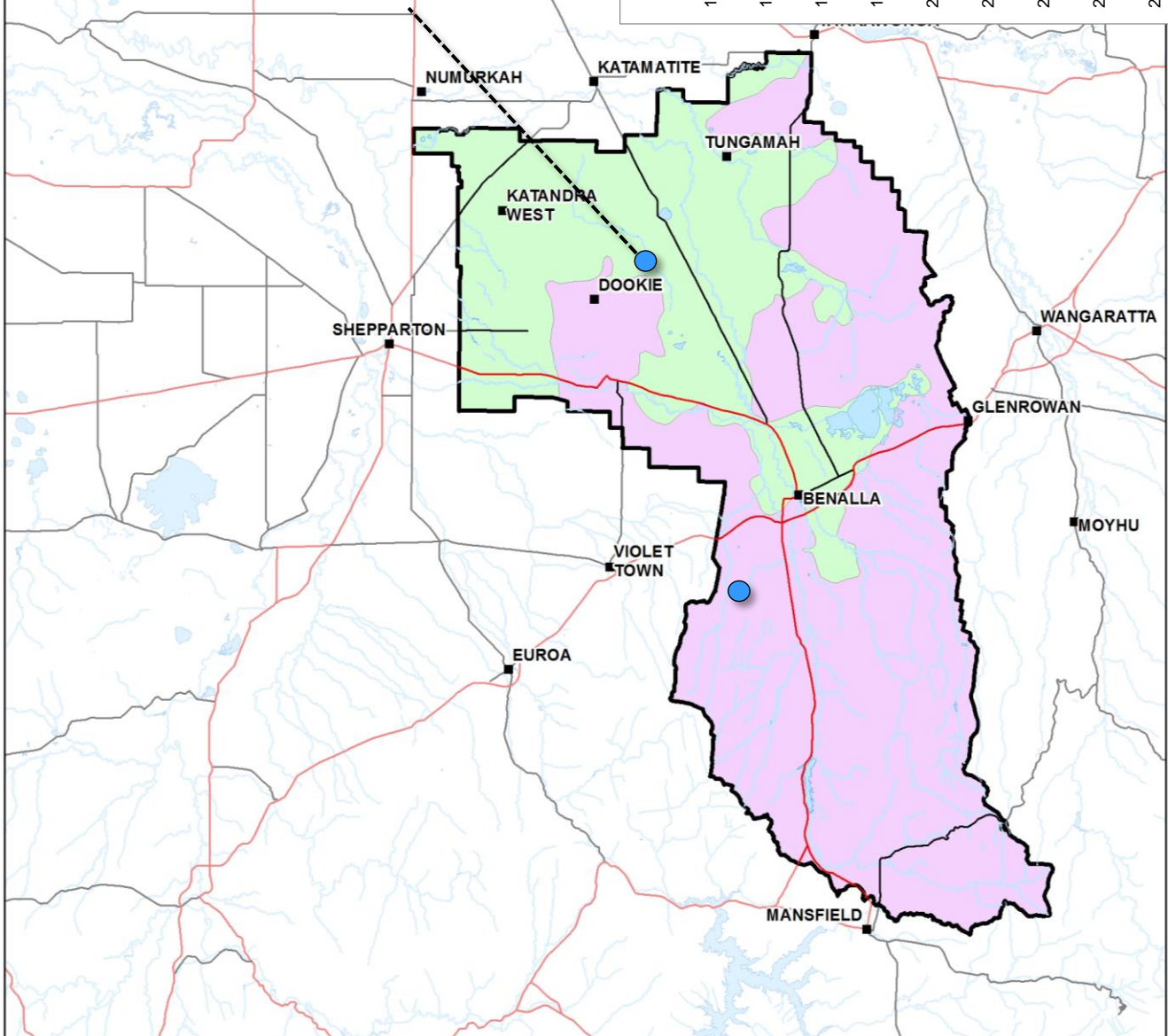
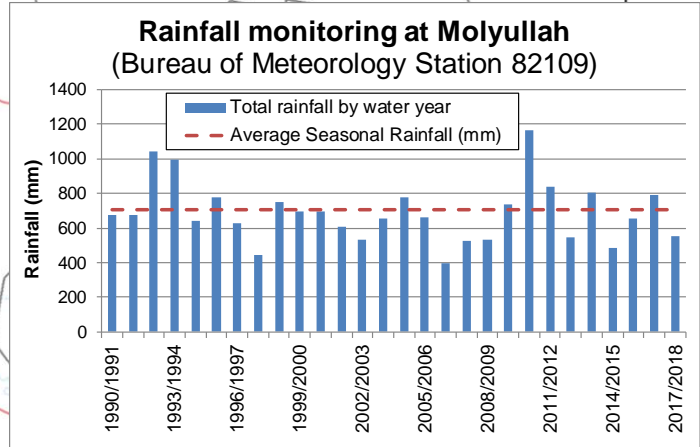
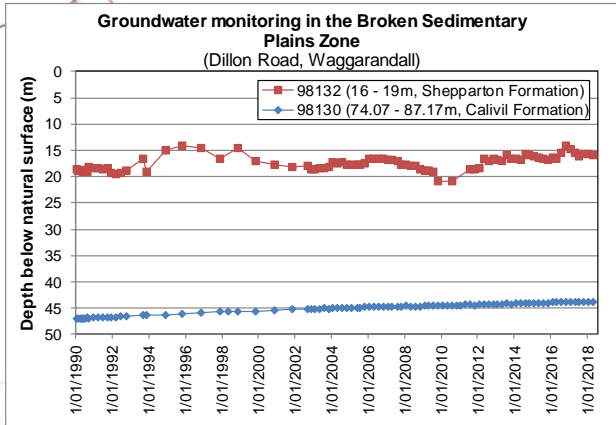
Transferring licensed volume can provide an opportunity to generate income from unused entitlement for sellers, or increase production for buyers.

Where can I get more information?

You can download a copy of the Local Management Plan from the Goulburn-Murray Water website www.gmwater.com.au or call GMW on 1800 013 357.

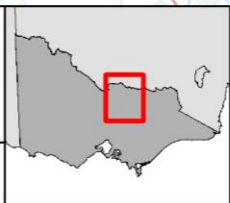
BROKEN GROUNDWATER MANAGEMENT AREA

GOULBURN-MURRAY WATER



GOULBURN-MURRAY WATER
 IR285503
 28 Aug 2017

GOULBURN-MURRAY WATER
 40 CASEY STREET (PO BOX 165)
 TATURA VIC 3616
 PH (08) 5833 5500 Fax (08) 58245827
 gmw@gmw.com.au



Legend

- Freeway/ Highway
- Major Road
- Waterway
- Waterbody
- Broken GMA
- Broken Highlands
- Broken Sedimentary Plain

SCALE AT A4 1:750,000

The content of this product is provided for information purposes only. No claim is made as to the accuracy or authenticity of the content of the product. In no event will G-MW, its agents, instrumentalities and employees be liable for the accuracy of the information contained within this product nor its use of reliance placed on it. The information used within this product is provided on the basis that all persons accessing the information undertake responsibility for assessing the relevance and accuracy of its content.

Z:\2017_Products\IR285503\IR285503_Broken.mxd