



Upper Goulburn GMA

The Upper Goulburn Groundwater Management Area (GMA) comprises the Goulburn River Catchment downstream of Lake Eildon to Seymour.

The 2013/14 season saw the successful introduction of the Local Management Plan for the GMA. The Plan, developed in consultation with customers and key stakeholders was endorsed by GMW in September 2013.

Groundwater entitlement and use

There is currently 6068 ML entitlement in the Upper Goulburn GMA. The majority of entitlement is held in the Goulburn and King Parrot Zones (Table 1).

Management zone	Zone Cap	Entitlement (ML/yr)	Usage (ML/yr)
Acheron	876	284.0	51.8
Goulburn	3,891	3,106.0	249.3
Home	392	375.5	79.5
King Parrot	1,049	1,086.3	181.3
Lower Yea	863	362.0	48.6
Upper Yea	720	773.3	88.1
Yarck	276	81.0	0
Total	8,462	6,068.1	698.6

Table 1 Entitlement and usage in the Upper Goulburn GMA

Metered use in the Upper Goulburn GMA in 2013/14 was 698.6 ML or 12% of total entitlement. This is similar to usage in previous years (Figure 1).

Groundwater trading

The Plan introduced trading rules to the GMA. Customers may transfer entitlement on a temporary or permanent basis within or between zones provided caps are not exceeded.

In 2013/14 one permanent trade was undertaken within the King Parrot Zone for a total of 10 ML in 2013/14.

Groundwater levels

Groundwater levels fluctuate seasonally in response to climate conditions and groundwater extraction; groundwater recover levels remain stable (Figure 2).

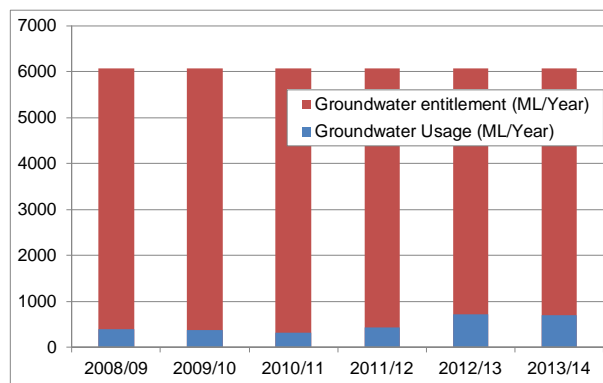


Figure 1 Groundwater usage

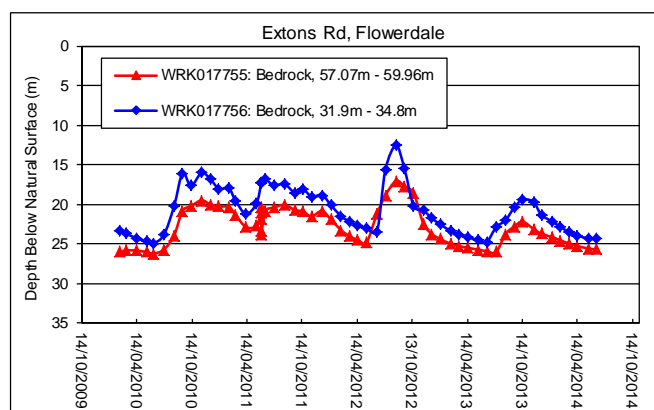


Figure 2 Groundwater levels in Flowerdale

Domestic and stock bores

A take and use licence is not required to access water for domestic and stock purposes, however a bore construction licence is required to install a bore. Once a bore is constructed, customers are required to return a bore construction report to GMW.

In 2013/14 four applications were received for new domestic and stock bores in the Strathbogie GMA. Four bore construction reports were received in 2013/14.

Further investigations

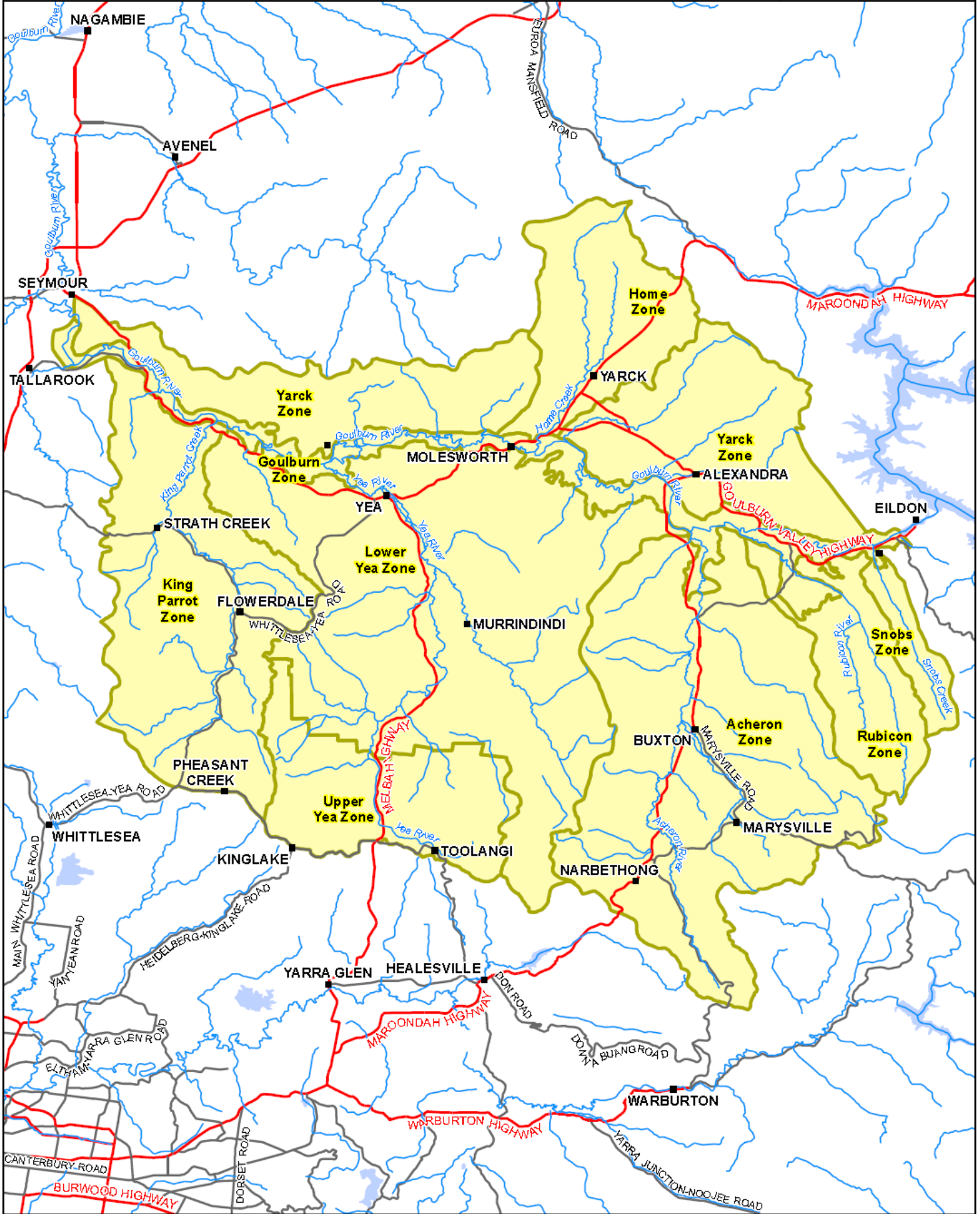
GMW has commenced further investigations to improve the current understanding of the interaction between groundwater flow and the Goulburn River. This information will assist GMW to licence and manage groundwater in the Upper Goulburn GMA.

Where can I get more information?

You can download a copy of the Upper Goulburn Groundwater Management Local Management Plan from the GMW website www.gmwater.com.au or call Karina Joy on 1800 013 357.

UPPER GOULBURN GROUNDWATER MANAGEMENT AREA

GOULBURN-MURRAY WATER



WATER

GMW-13-142

25 Sep 2013

GOULBURN-MURRAY WATER
40 CASBY STREET | PO BOX 183
YARRA VIC 3616
PH (053) 852 52 00 | FAX (053) 852 43 27
www.gmw.com.au



Legend

- Freeway/Highway
- Major Road
- Upper Goulburn GMA
- Waterway
- Waterbody

SCALE AT A4 1:500,000

0 475 9.5 19 km

The content of this product is provided for information purposes only. No claim is made as to the accuracy or suitability of the content of the product. No liability is accepted by Goulburn-Murray Water for any loss or damage, including consequential loss, arising from the use of this product. It is the responsibility of the user to ensure that the product is provided on the basis that all necessary approvals and permits are obtained for assessing the relevance and accuracy of its content.

2/2019_Produced/GMW-13-142/GMW-13-142_Upper Goulburn GMA_v01a1.mxd