

## Shepparton Irrigation Region Groundwater Management Area

The Shepparton Irrigation Region Groundwater Management Area (SIR GMA) covers an area of approximately 500,000 hectares and incorporates the Shepparton, Central Goulburn, Rochester and Murray Valley irrigation districts.

It extends from Yarrawonga to Echuca, along the River Murray, and south to Murchison and Colbinabbin (shown overleaf).

Groundwater resources from the surface to a depth of 25 metres are managed through the *Shepparton Irrigation Region Groundwater Management Area Local Management Plan*.

### Groundwater licence volume and use

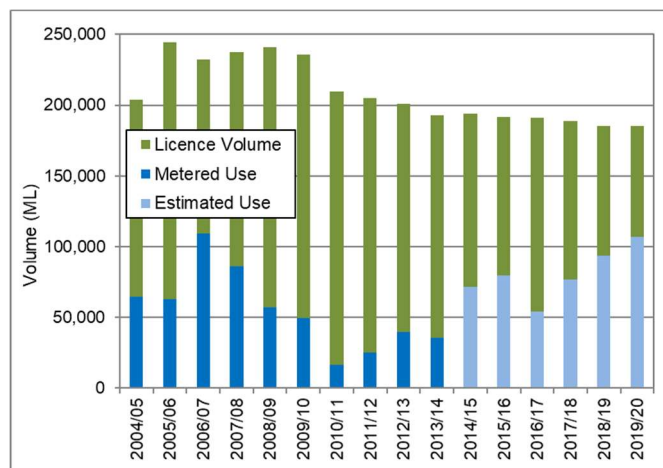
The total licensed entitlement volume in the SIR GMA is currently 185,186.6 ML/yr (megalitres per year) (Figure 1). This is 134 ML/yr less than 2018/19 due to four licences being cancelled.

Groundwater use in the SIR GMA is estimated at the end of each season using a method which considers:

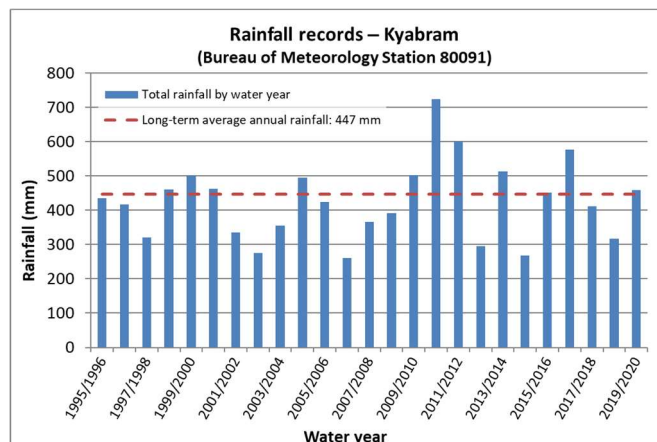
- Annual use by a subset of licensed groundwater bores that are metered
- Volume of metered groundwater use in the Katunga Water Supply Protection Area (WSPA)
- Spring rainfall at Kyabram.

This method is accepted as a conservative and cost-effective approach to understanding annual use in the SIR GMA.

In the 2019/20 water year the estimated use was 106,718.9 ML which equates to 58% of the total licensed volume. This is a 7% increase from 2018/19 and the greatest since 2006/07 when use was metered (Figure 1). This increase reflects higher use in the Katunga WSPA area and lower rainfall in the region (Figure 2).



**Figure 1 – Annual use as a proportion of total licensed volume in the SIR GMA**



**Figure 2 – Rainfall monitoring at Kyabram**

### Monitoring shallow groundwater levels

Groundwater levels in the SIR GMA fluctuate in response to infiltration of rainfall and irrigation. When levels are close to the surface, land salinisation and waterlogging of soils can threaten social, economic and environmental values.

Groundwater levels are monitored in approximately 960 observation bores located across the SIR GMA. An annual watertable map is produced enabling watertable changes and trends to be understood. The four most recent water table maps are provided overleaf.

#### **Want to know more about shallow groundwater?**

The Shepparton Irrigation Region Shallow Groundwater website provides information on the benefits and risks associated with shallow groundwater in the region. Key features include easy-to-find shallow groundwater levels and regional salinity risk mapping.

Visit: <https://salinitywatch.gbcm.vic.gov.au>

### Groundwater salinity monitoring

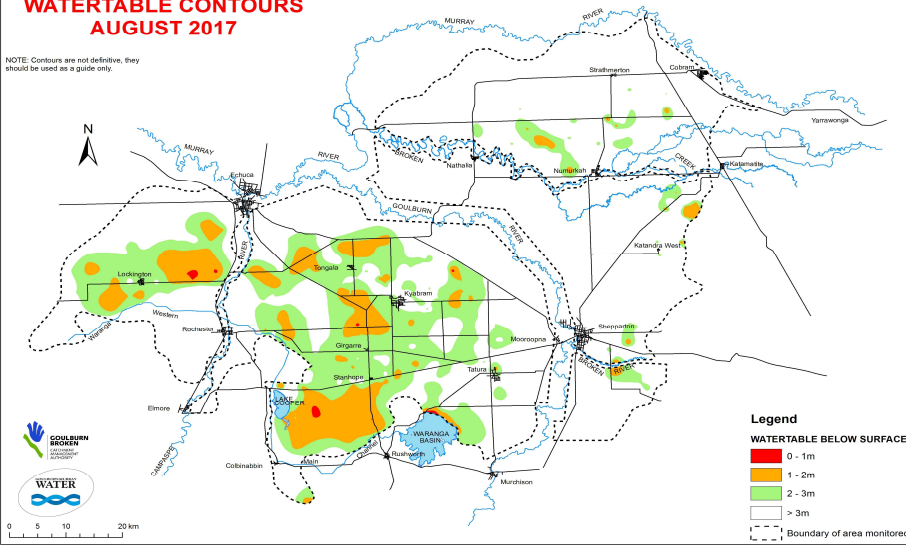
If you would like your groundwater salinity checked, please contact Goulburn-Murray Water (GMW) to organise a sampling bottle to be sent to you. Once you have returned your sample, GMW will test your groundwater salinity and provide you with the results.

### Where can I get more information?

You can download a copy of the Local Management Plan from GMW's website at [www.gmwater.com.au](http://www.gmwater.com.au) or call 1800 013 357.

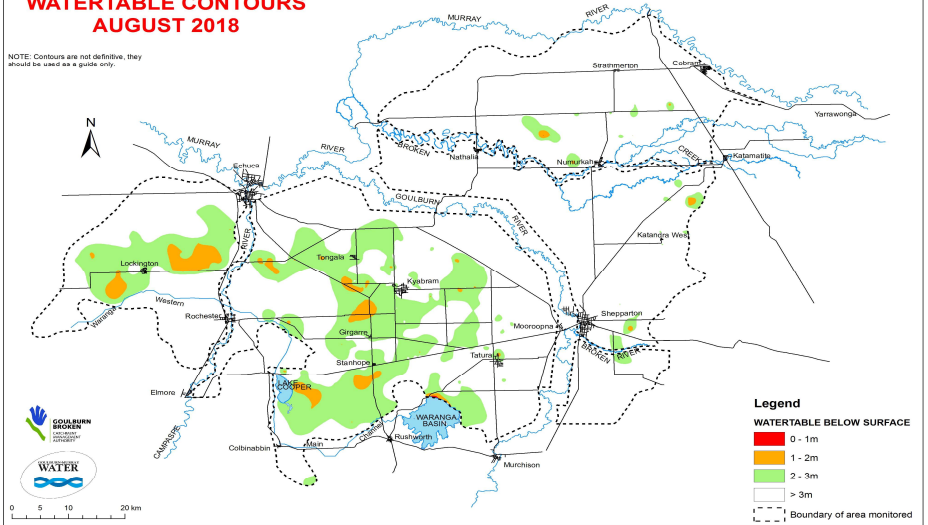
# SHEPPARTON IRRIGATION REGION WATERTABLE CONTOURS AUGUST 2017

NOTE: Contours are not definitive, they should be used as a guide only.



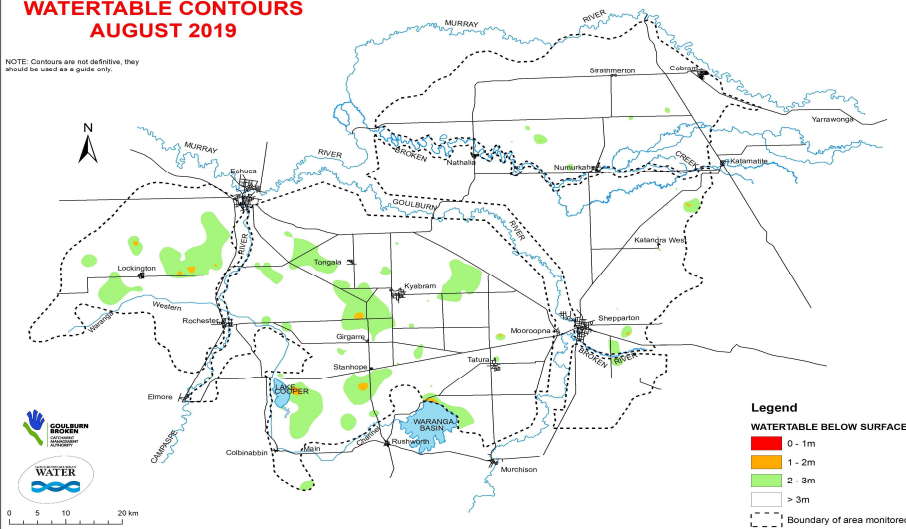
# SHEPPARTON IRRIGATION REGION WATERTABLE CONTOURS AUGUST 2018

NOTE: Contours are not definitive, they should be used as a guide only.



# SHEPPARTON IRRIGATION REGION WATERTABLE CONTOURS AUGUST 2019

NOTE: Contours are not definitive, they should be used as a guide only.



# SHEPPARTON IRRIGATION REGION WATERTABLE CONTOURS AUGUST 2020

NOTE: Contours are not definitive, they should be used as a guide only.

