



## Shepparton Irrigation Region GMA

The Shepparton Irrigation Region Groundwater Management Area (GMA) is mainly within the Goulburn Broken catchment and covers the Murray Valley, Shepparton, Central Goulburn and Rochester Irrigation areas.

The northern boundary of the GMA is the Murray River from Yarrawonga to just past Echuca, with the southern boundary generally following the irrigation districts. The Shepparton Irrigation Region GMA applies to groundwater resources to a depth of 25 metres.

### Changes to management

The 2013/14 season saw the Shepparton Irrigation Region Water Supply Protection Area abolished and the Groundwater Management Plan revoked by the Minister for Water.

A draft Local Management Plan is being developed for the Shepparton Irrigation Region in consultation with groundwater users and key stakeholders. The draft plan will provide users with greater flexibility to manage their entitlement. The draft plan will be released for consultation in March 2015, with feedback sessions to be held around the region as well as an online survey.

### Groundwater use

Groundwater use in the Shepparton Irrigation Region in 2013/14 was 35 gigalitres, which is 18 per cent of total entitlement in the GMA.

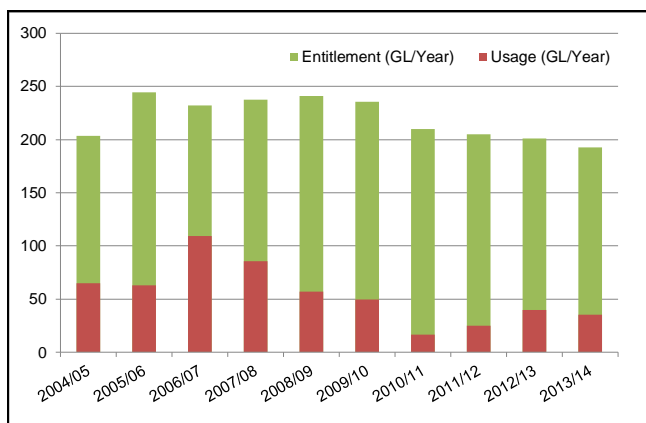


Figure 1 Groundwater usage in the Shepparton Irrigation Region GMA

## Groundwater levels

Groundwater levels are monitored in a number of observation bores across the Shepparton Irrigation Region GMA. Shallow water tables pose a threat in the Shepparton Irrigation Region, and an annual water table map is produced showing areas of risk, and monitor trends.

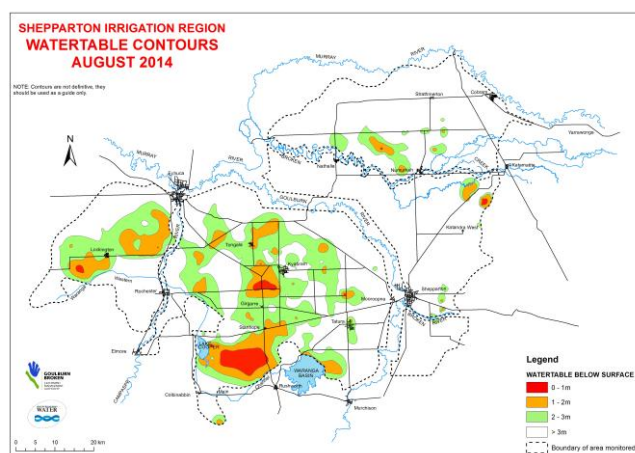


Figure 2 Water table contours for August 2014

## Groundwater salinity

GMW sent 1,257 sample bottles to groundwater users to collect a sample for salinity analysis. A total of 177 samples were returned. The results of the sampling have been plotted on the map overleaf.

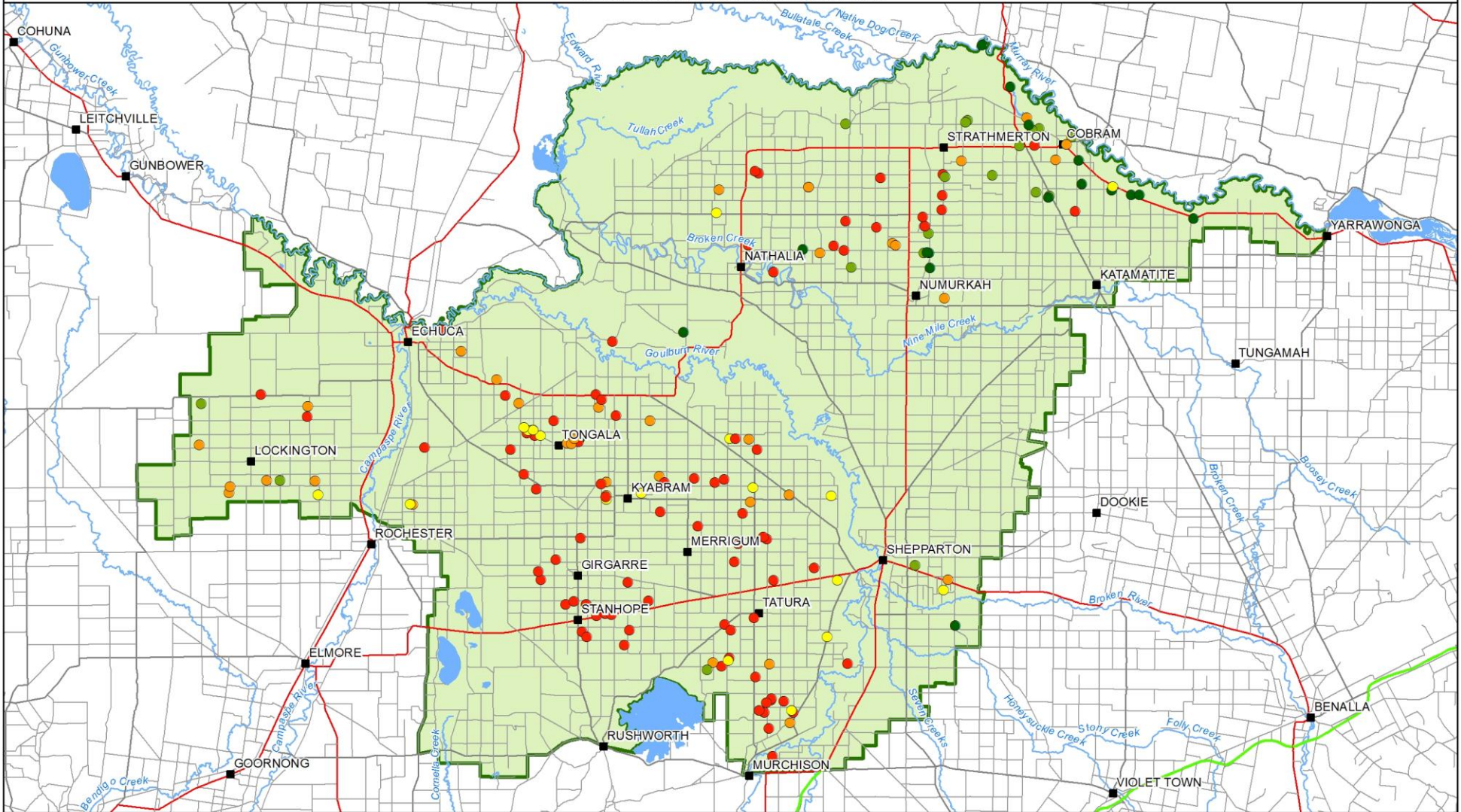
Groundwater users are encouraged to return samples for analysis when requested as trends over time provide valuable information to help inform resource management decisions.

### Where can I get more information?

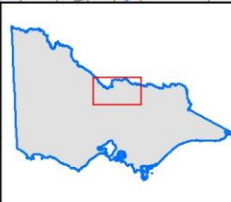
You can download a copy of the Shepparton Irrigation Region GMA interim management rules or the draft Local Management Plan from the GMW website [www.gmwater.com.au](http://www.gmwater.com.au) or call Krystle Gillingham on 1800 013 357.

# SHEPPARTON IRRIGATION REGION WSPA

2013/14 RETURNED SALINITY SAMPLE DISTRIBUTION



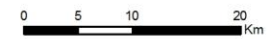
  
**IR131574**  
 15 Aug 2014  
 GOULBURN-MURRAY WATER  
 40 CASEY STREET (PO BOX 185)  
 TATURA VIC 3616  
 Ph (03) 5833 5500 Fax (03) 58245827  
 gmsupport@g-m-water.com.au



## Legend

<p><b>Salinity (<math>\mu\text{S/cm}</math>)</b></p> <ul style="list-style-type: none"> <li><span style="color: green;">●</span> 0 - 500</li> <li><span style="color: yellow;">●</span> 501 - 1000</li> <li><span style="color: orange;">●</span> 1501 - 2000</li> <li><span style="color: red;">●</span> &gt; 2000</li> </ul>	<ul style="list-style-type: none"> <li><span style="color: green;">■</span> Major Town</li> <li><span style="color: orange;">■</span> Freeway</li> <li><span style="color: red;">■</span> Highway</li> </ul>	<ul style="list-style-type: none"> <li><span style="border-bottom: 2px solid grey; width: 20px; display: inline-block;"></span> Major Road</li> <li><span style="border-bottom: 1px solid grey; width: 20px; display: inline-block;"></span> Minor Road</li> </ul>	<ul style="list-style-type: none"> <li><span style="border-bottom: 2px solid blue; width: 20px; display: inline-block;"></span> Waterway</li> <li><span style="background-color: blue; width: 20px; height: 10px; display: inline-block;"></span> Reservoir</li> </ul>
--	--	--	--

SCALE AT A4 1:620,000



The content of this product is provided for information purposes only. No claim is made as to the accuracy or authenticity of the content of the product. In no event will G-MW, its agents, instrumentalities and employees be liable for the accuracy of the information contained within this product nor its use or reliance placed on it. The information used within this product is provided on the basis that all persons accessing the information undertake responsibility for assessing the relevance and accuracy of its content.

2\2014\_Products\IR131574\IR131574 A4 L Salinity 2013-14.mxd