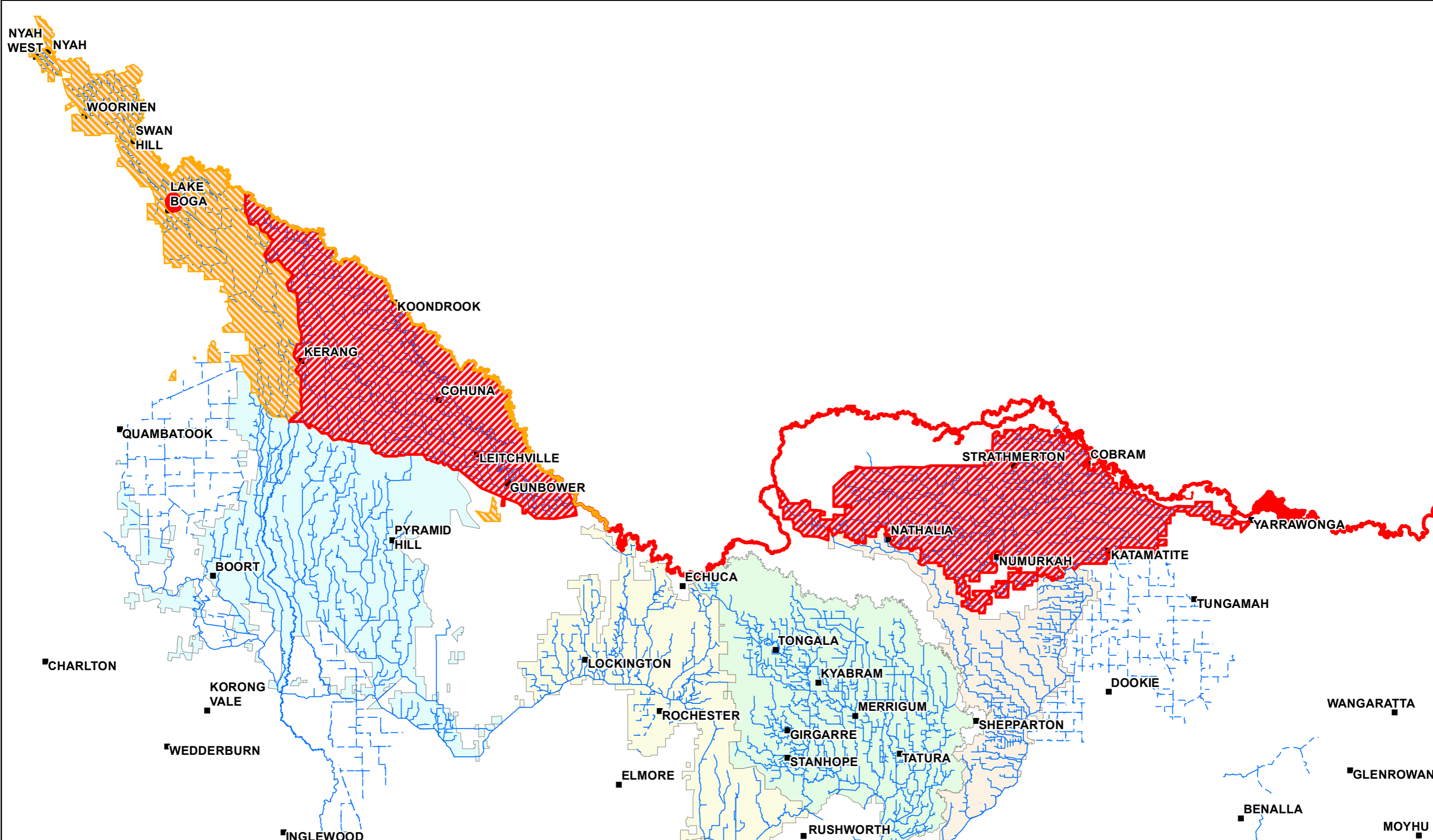



Blue Green Algae (BGA) Alert Areas

GOULBURN-MURRAY WATER





IR209331

 29 FEB 2016


GOULBURN-MURRAY WATER
 40 CASEY STREET (PO BOX 165)
 TATURA VIC 3616
 Ph (03) 5833 5500 Fax (03) 58245827
 gissupport@g-mwater.com.au



Legend

- Caution: Potential subject to BGA outbreak
 - Declared BGA outbreak
 - Declared BGA outbreak
 - Caution: Potential subject to BGA outbreak
 - Subject to BGA outbreak
- Channel
 - Pipeline
 - Central Goulburn
 - Rochester
 - Murray Valley
 - Shepparton
 - Loddon Valley
 - Torrumbarry

SCALE AT A3 1:700,000



The content of this product is provided for information purposes only. No claim is made as to the accuracy or authenticity of the content of the product. In no event will G-MW, its agents, instrumentalities and employees be liable for the accuracy of the information contained within this product nor its use or reliance placed on it. The information used within this product is provided on the basis that all persons accessing the information undertake responsibility for assessing the relevance and accuracy of its content.

Z:\2016_Products\IR209331\IR209331 A3-L BGA Alert Areas.mxd