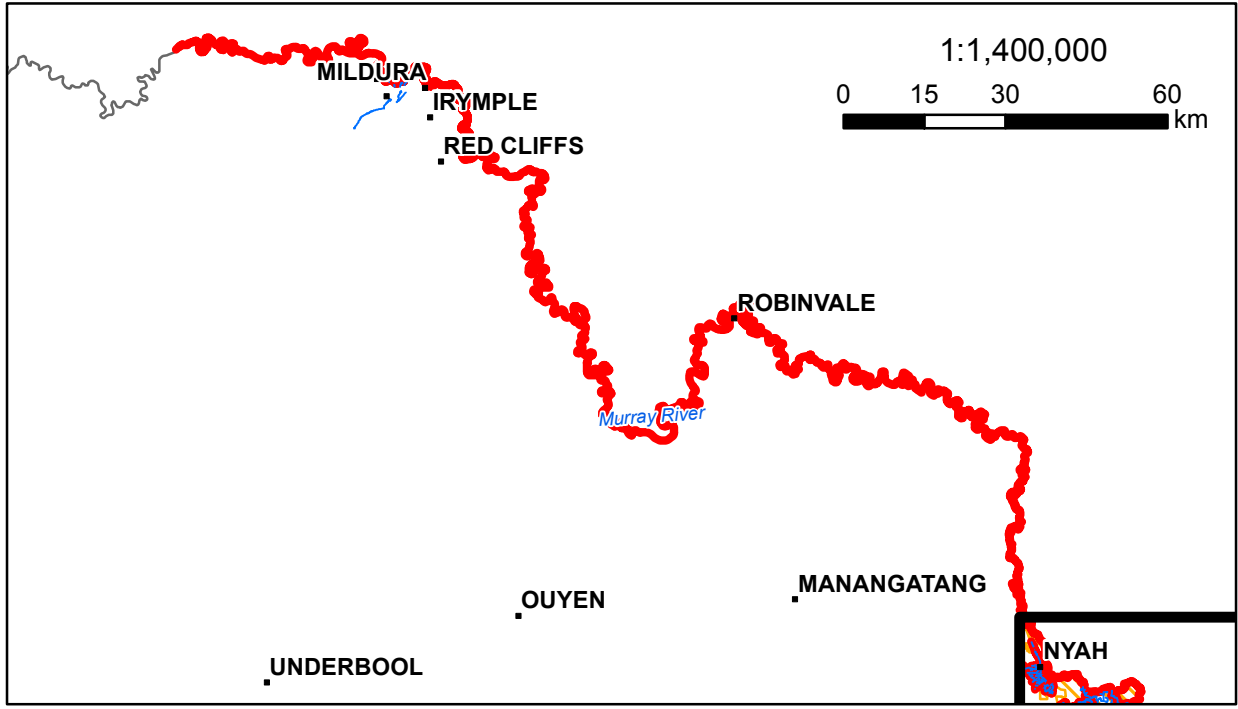
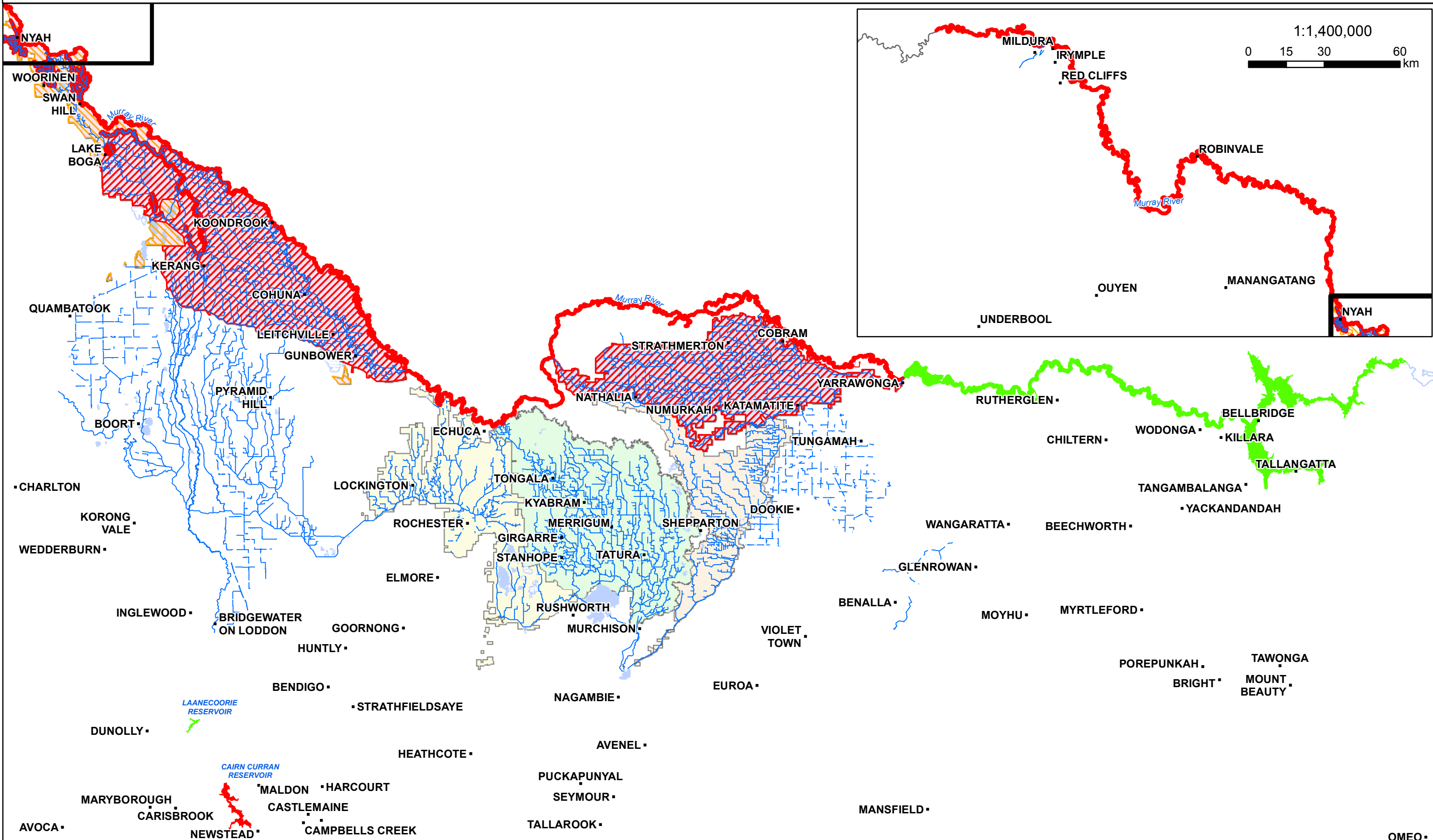



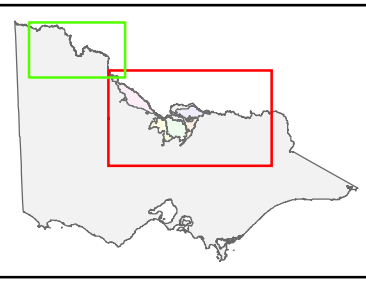
# Blue Green Algae (BGA) Alert Areas

GOULBURN-MURRAY WATER





  
**IR209331**
  
 18 MAY 2016

GOULBURN-MURRAY WATER
   
 40 CASEY STREET (PO BOX 165)
   
 TATURA VIC 3616
   
 Ph (03) 5833 5500 Fax (03) 58245827
   
 reception@gmwater.com.au



**BGA Status**

- BGA Warning Recently Removed
- Declared BGA warning
- Caution: Potential for BGA warning
- Declared BGA warning

— Channel  
— Pipeline  
 Waterbody  
 Wetland

Central Goulburn  
 Murray Valley  
 Loddon Valley  
 Rochester  
 Shepparton  
 Torrumbarry

SCALE AT A3 1:950,000

0 15 30 60 km

The content of this product is provided for information purposes only. No claim is made as to the accuracy or authenticity of the content of the product. In no event will G-MW, its agents, instrumentalities and employees be liable for the accuracy of the information contained within this product nor its use or reliance placed on it. The information used within this product is provided on the basis that all persons accessing the information undertake responsibility for assessing the relevance and accuracy of its content.