

Goulburn-Murray Water At a Glance

About us

Goulburn-Murray Water (GMW) is Victoria's largest rural water provider.

We store, manage and deliver about 70 per cent of the state's stored water, and 50 per cent of underground water supply to a 68,000 square kilometre region.

In 2015/16:

1,944 MEGALITRES OF WATER DELIVERED TO CUSTOMERS	124,446 IRRIGATION ORDERS PROCESSED	12,315 WATER ALLOCATION TRADES PROCESSED <small>involving 2,495 gigalitres of allocation</small>	2,756 WATER SHARE TRANSFERS PROCESSED <small>involving 160,590 megalitres of water share</small>
--	---	---	---

We provide water to:

 RURAL Rural water businesses that supply rural areas.	 URBAN Urban water businesses that supply towns and businesses.	 ENVIRONMENTAL Environmental water holders that protect and improve waterway health.
---	---	---





More facts about us:

24 STORAGES	\$115.9 REVENUE FOR 2016/17
Tatura HEAD OFFICE	\$5 ASSETS
14 CUSTOMER AND STAKEHOLDER ADVISORY COMMITTEES	10,900 CHANNELS, PIPELINES & DRAINS

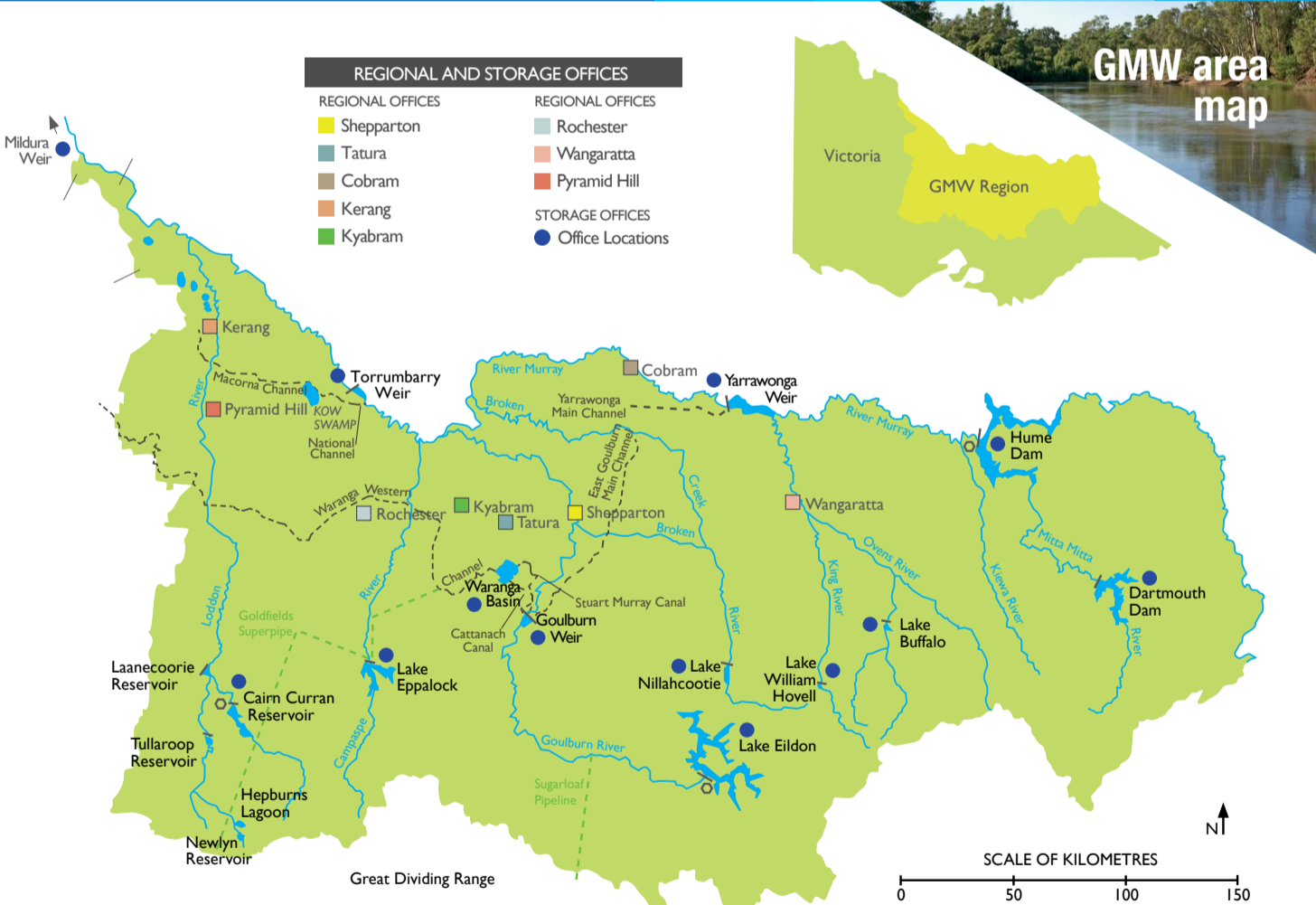
Recreation

Goulburn-Murray Water:

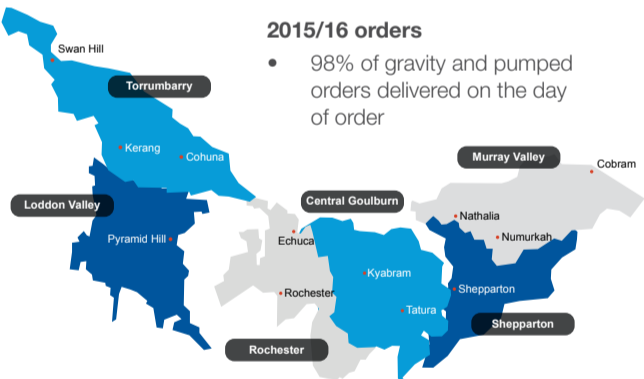
- manages boating on 13 dams, lakes and reservoirs
- maintains more than 50 public boat ramps
- facilitates commercial and community events
- supports Land and On Water Management Plans
- operates and maintain more than 70 public recreation reserves and commercial leases and licenses for:

 721 houseboats on Lake Eildon	 62 recreational clubs
 11 caravan parks	 4 houseboat marinas




 @GMWaterNews
 @goulburnmurraywater

The Goulburn-Murray Irrigation District



The Goulburn-Murray Irrigation District (GMID) spans 27,000 sq km across the municipalities of Greater Shepparton, Swan Hill, Campaspe, Moira, Gannawarra and Loddon.

 DAIRY 1,200 dairy farms, 6,600 jobs and 308,000 cows. 2 billion litres of milk each year worth \$850 million. 31% of Victoria's milk. 21% of Australia's milk.	 CROPPING 400,000 hectares of irrigated broadacre crops. Worth \$395 million a year. Wheat, barley, triticale, corn and oilseeds.	 HORTICULTURE 28,151 hectares of fruit and vegetables. More than half of Australia's stone fruit. Almost three quarters of Australia's pear crop. Worth \$702 million.
--	---	---

\$5.9
VALUE OF PRODUCTION IN THE GMID

Sources RMC: GMID Irrigated Sector Analysis and Agricultural Census 2010-11

Our customers include:

14,131 GRAVITY IRRIGATORS	676 IRRIGATORS ON PUMP SYSTEMS	11,071 SURFACE WATER DIVERTERS	1,269 DOMESTIC & STOCK CUSTOMERS	8,786 GROUND WATER DIVERTERS	1,735 NON WATER USERS
-------------------------------------	--	--	--	--	---------------------------------

Northern Victorian Resource Manager

The Resource Manager makes seasonal determinations for all northern Victorian regulated river systems including the Goulburn, Broken, Campaspe, Loddon, Bullarook and Murray regulated river systems.

The Minister for Water appointed GMW to undertake this role in accordance with Victorian water sharing rules.



For more information on GMW and its operations, visit www.gmwater.com.au or call 1800 013 357.