

# Cairn Curran Reservoir Recreation Guide



# Welcome to Cairn Curran

Cairn Curran is one of a chain of reservoirs along the Loddon River.

Cairn Curran Reservoir is approximately 10 km west of Maldon and 30 km east of Maryborough.

Cairn Curran Reservoir is a very popular spot for fishing and boating, attracting visitors from around Victoria and interstate.

Facilities along the foreshore include caravan parks and picnic areas with electric barbeques.



Did you know?

Water released from Cairn Curran Reservoir flows some 20 kilometres north-west into Laanecoorie Reservoir. From here it is released into the Loddon River.

Like to know more about Cairn Curran Reservoir?

Visit us at [www.g-mwater.com.au](http://www.g-mwater.com.au)

## GMW & Dams

Cairn Curran Reservoir is one of GMW's 16 water storages scattered across a region the size of Tasmania.

GMW is not only responsible for dams - it also looks after recreational activities on and around the water:

As part of managing these responsibilities, GMW develops a Land and On-Water Management Plan for each storage, including Cairn Curran. The Plans focus on what people value and enjoy about GMW's water storages - from boat ramps to picnic tables, water sports to wildlife habitat.

To find out more about the Cairn Curran Reservoir Land and On-Water Management Plan visit:  
**[www.g-mwater.com.au/storages](http://www.g-mwater.com.au/storages)**

## Dam Operations

Cairn Curran Reservoir is part of a chain of reservoirs along the Loddon River which also includes Newlyn, Tullaroop and Laanecoorie Reservoirs and Hepburns Lagoon.

Cairn Curran has a capacity of 147,130 megalitres and covers 1,943 hectares.

Completed in 1956, the Reservoir supplies water to irrigation and domestic and stock users along the Loddon River:

The dam wall and main spillway are located at the Baringhup end of the Reservoir and a secondary spillway is two kilometres west of the main structure.

A two megawatt hydro-electric power station generates electricity when irrigation and flood releases are being made.

## Fishing



Fishing is one of the most important and popular activities at Cairn Curran. Late spring and early summer are the best times to find Golden Perch, Brown Trout, Murray Cod and Redfin in the Reservoir's deep water.

Try using yabbies as bait on a running sinker to catch Redfin. For more handy hints contact the nearby angling clubs in Maryborough and Castlemaine.

For the latest information on fishing at Cairn Curran contact DEPI.

## Boating



Cairn Curran is a popular spot for power boating, jet skiing, sailing, rowing and canoeing.

The Cairn Curran Sailing Club holds regular events between October and April.

Wild duck hunting is also a popular activity on Cairn Curran Reservoir. Duck hunting is permitted on a seasonal basis, in a declared hunting season, generally from mid March to early June.

Boats can be launched from three public boat ramps around the Reservoir. See the *Boating Map* overleaf.

A dam is specially built to control the storage and release of water. The structure and the lake formed by the dam are called a 'reservoir'.

GMW is Australia's largest rural water corporation managing around 70% of Victoria's stored water resources.

## Relax & Unwind...

Two hours from Melbourne, Cairn Curran Reservoir offers plenty to see and do for the whole family. Enjoy a BBQ at one of Cairn Curran's three recreational reserves, take the jet ski for a spin or throw in a line.

Surrounded by the historic goldmining towns of Maldon, Castlemaine and Maryborough, Cairn Curran is the gateway to your goldfields getaway.

### Accommodation:

Choose from a lakeside or riverside caravan park and nearby self contained cottages.

For more information contact the Visitor Information Centre on 03 5460 4511 or visit: [www.visitmaryborough.com.au](http://www.visitmaryborough.com.au)

### Key Historical Sites Around Cairn Curran

- Plaistow Homestead and Store
- Newstead Court House
- Junction Deep Lead Co, Deep Leads Electric Commission Co and Loddon Valley Co, located near Baringhup
- Maldon township

### Community Vision for Cairn Curran Reservoir:

Cairn Curran Reservoir is a key regional asset attracting users for a variety of high quality water based recreation activities.

Through coordinated management, recreation and business opportunities are maximised, and the downstream Loddon Valley community benefits from the water resource.

# Who should I contact about...

## *Emergencies:*

Police, Fire, Ambulance  
000

## *Fishing information:*

Department of  
Environment and Primary  
Industries 136 186  
Please refer to the Victorian  
Recreational Fishing Guide  
available at:  
[www.depi.vic.gov.au/fisheries](http://www.depi.vic.gov.au/fisheries)

## *Weather reports:*

Bureau of Meteorology  
[www.bom.gov.au](http://www.bom.gov.au)

## *Boating information:*

Transport Safety Victoria  
1800 223 022  
Please refer to the Victorian  
Recreational Boating Safety  
Handbook available at:  
[www.transportsafety.vic.gov.au](http://www.transportsafety.vic.gov.au)

Stay  
informed

Subscribe to free updates on  
[www.gmwater.com.au/  
subscribe](http://www.gmwater.com.au/subscribe)

## *Environmental information:*

EPA Victoria  
1300 372 842  
[www.epa.vic.gov.au](http://www.epa.vic.gov.au)

Parks Victoria  
131 963  
[www.parks.vic.gov.au](http://www.parks.vic.gov.au)

*GMW storages are open and easily accessible to the general public. They provide wonderful recreation opportunities, however their primary purpose is for storage and delivery of irrigation water to GMW customers. Water levels vary over the irrigation season, rising with rainfall and falling as water is released for delivery.*

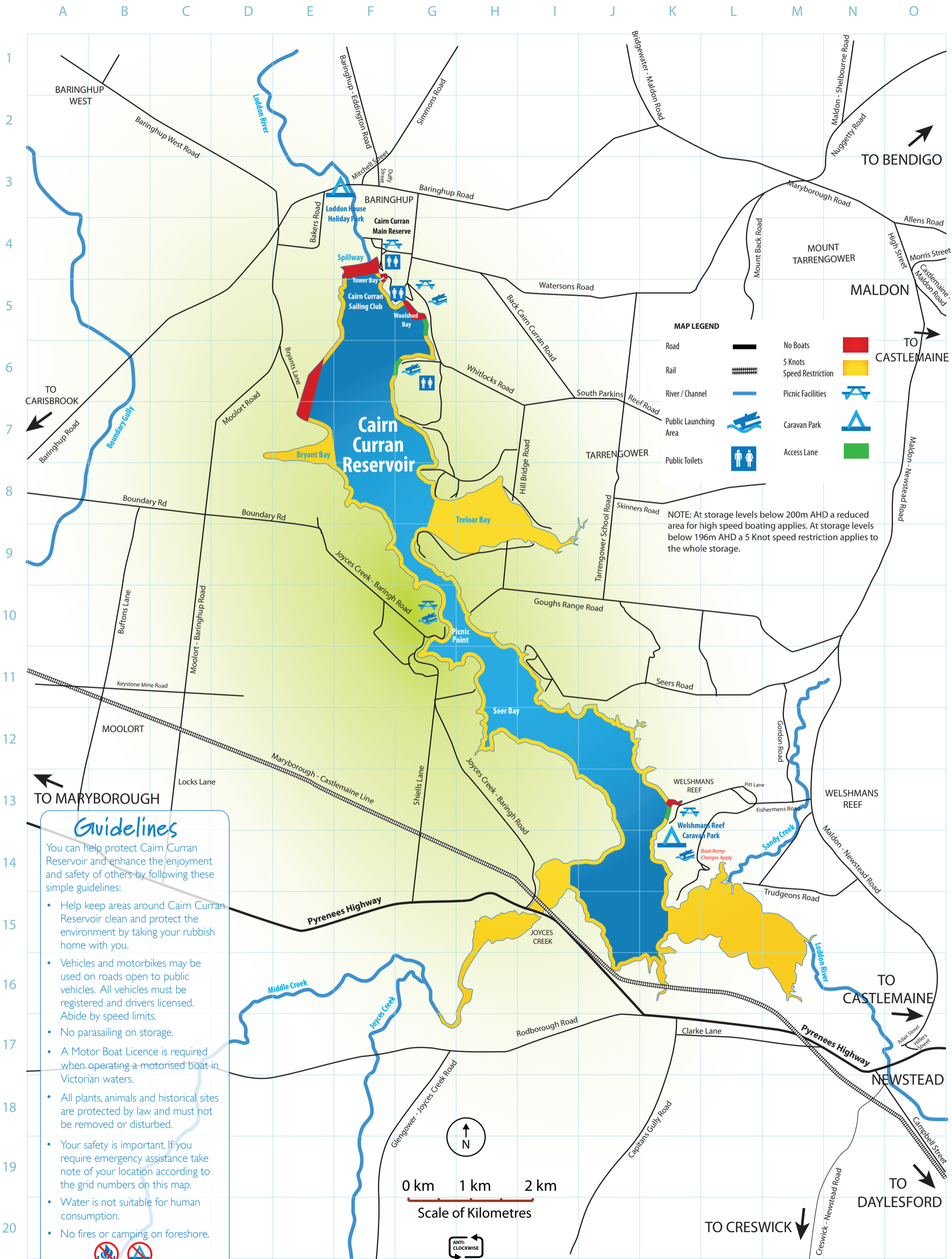


Goulburn-Murray Water  
PO Box 165  
Tatura Vic 3616

Tel 1800 013 357  
[www.gmwater.com.au](http://www.gmwater.com.au)

Copyright GMW. All rights reserved. Updated November 2013.

# Cairn Curran Reservoir Boating & Facilities Map



### Guidelines

You can help protect Cairn Curran Reservoir and enhance the enjoyment and safety of others by following these simple guidelines:

- Help keep areas around Cairn Curran Reservoir clean and protect the environment by taking your rubbish home with you.
- Vehicles and motorbikes may be used on roads open to public vehicles. All vehicles must be registered and drivers licensed. Abide by speed limits.
- No parasailing on storage.
- A Motor Boat Licence is required when operating a motorised boat in Victorian waters.
- All plants, animals and historical sites are protected by law and must not be removed or disturbed.
- Your safety is important. If you require emergency assistance take note of your location according to the grid numbers on this map.
- Water is not suitable for human consumption.
- No fires or camping on foreshore.

**Be safe - take care**

0 km 1 km 2 km  
Scale of Kilometres

ANTI-CLOCKWISE SKIING