

Duck Hunting at Lake Charm and surrounds

Recreational duck hunting is permitted in Victoria during the designated duck hunting season.

The 2016 duck hunting season opens on Saturday 19 March and closes on Monday 13 June.

Duck hunting in Victoria

The Victorian Government, via the Game Management Authority, sets season dates, and manages duck hunting sustainably and bag limits, to ensure the conservation status of game species isn't threatened.

Goulburn-Murray Water permits duck hunting at many of its water storages during Victoria's designated duck hunting season. This includes Lake Charm, Kangaroo Lake and Racecourse Lake.

Caring for the lakes

The lakes are a beautiful natural resource. This duck hunting season, you can help care for the lakes by:

- **Staying at commercial caravan parks and clubs.** Camping is prohibited at GMW managed foreshores and perimeter land.
- **Using gas or electric (where available) barbeques.** Campfires are prohibited at GMW reserves, foreshores and lakebed areas.
- **Taking your rubbish home with you.** No rubbish services are available at GMW managed recreation reserves and foreshore areas.

Staying safe

Many people use our water storages for a range of activities and it's important that all visitors, including hunters, consider other members of the public and the environment, by acting in a safe and responsible manner.

Public access for any purpose (including duck hunting) is prohibited along GMW's channel network at all times.

The use of firearms and hunting in public recreation areas and around storage assets is also prohibited. These areas are clearly signed and marked on water storage maps that you can download from www.gmwater.com.au/recreation-tourism/duck-hunting

Unsafe behaviour

Irresponsible behaviour at our water storages can affect the enjoyment of other users.

Any irresponsible or unsafe hunting behaviour should be reported to the Game Management Authority by phoning 136 186. All information will be treated in confidence.

Urgent issues relating to the carriage of firearms should be reported to the Victorian Police on 000.

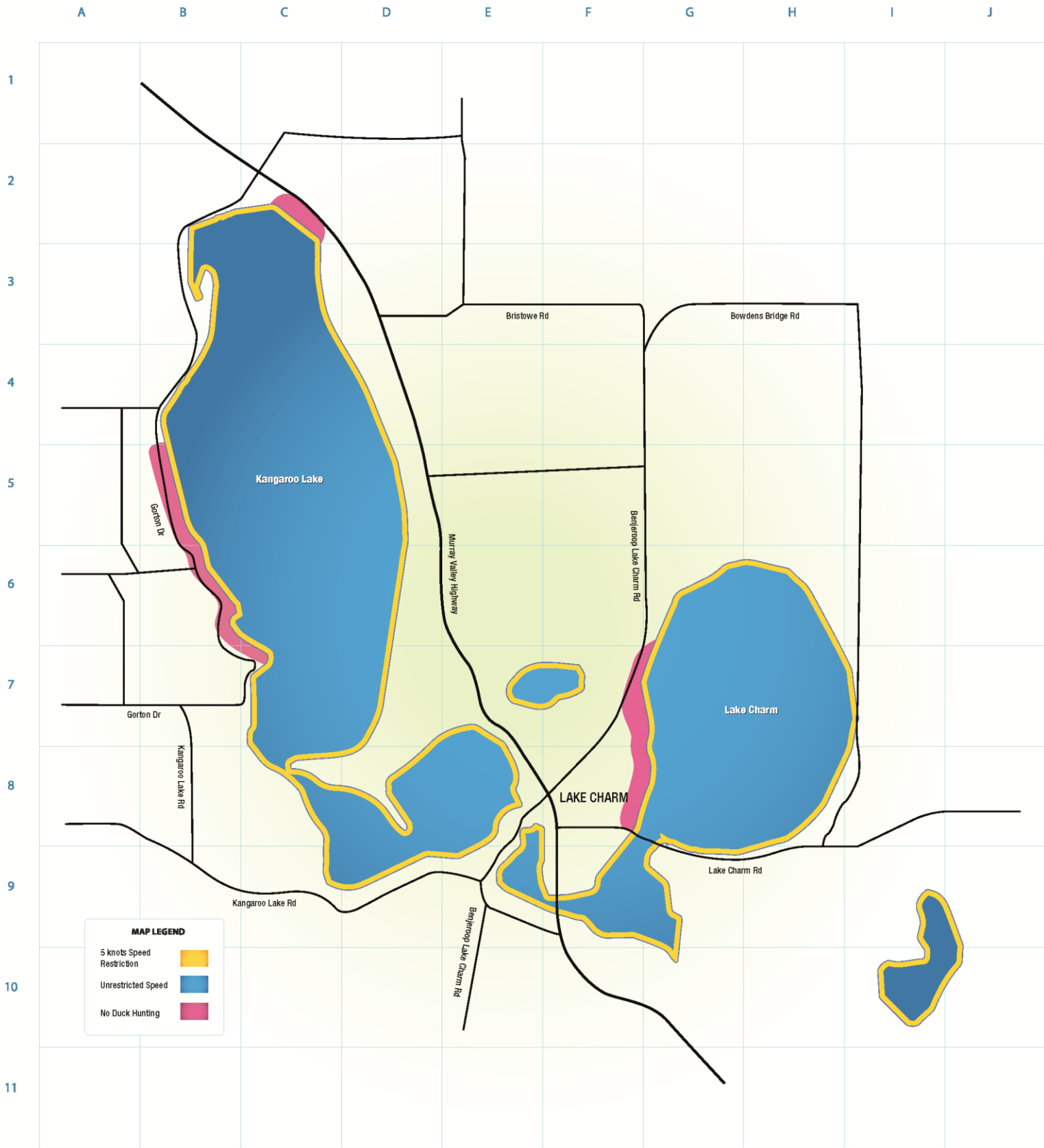
Further information

The Victorian Game Management Authority has developed the Victorian Hunting Guide. The guide keeps hunters informed about rules, regulations, bag limits and season dates. It can be downloaded at <http://www.gma.vic.gov.au/education/victorian-hunting-guide>.

The Game Management Authority has also developed a smart phone app to assist hunters this season. It can be downloaded from the App Store and Google Play.



Lake Charm & Kangaroo Lake Duck Hunting Prohibited Areas



Guidelines

Important information:

- This map only identifies areas where duck hunting is prohibited on land and water under the control of GMW
- All hunters must comply with the *Firearms Act 1996* and any Acts, regulations or codes that apply to duck hunting
- Duck hunting is not permitted:
 - on the channel network
 - outside of the times and dates of the specified duck hunting season

Visitors must:

- Remove their litter from GMW land and waterways
- Be aware lake water is not suitable for human consumption
- Not light fires on GMW managed land
- Not camp on GMW managed land, with exception of commercial caravan parks. For more information on recreation facilities and boating guidelines please refer to Boating and Facilities maps available at www.gmwater.com.au

Contact details:

- Urgent issues relating to the carriage and use of firearms should be referred to Victoria Police by dialling 000
- Information on duck hunting in Victorian waters is available from the Game Management Authority by phoning 136 186 or at www.gma.vic.gov.au

Be safe - take care