

Secure Allocations Future Entitlements

Victorian groundwater management project

What is Secure Allocations, Future Entitlements (SAFE)?

Secure Allocations, Future Entitlements (SAFE) is a project funded by the Commonwealth Government under the National Groundwater Action Plan to progress the management of groundwater in Victoria.

The SAFE project will ensure all of Victoria's groundwater is included in an appropriate management area and that there is consistency in the way groundwater is managed across the state.

This includes developing:

- management boundaries that cover all groundwater in the state instead of only part of it
- guidance for decisions about managing each area
- guidelines for better determining the volume of groundwater available for use.

Why does this need to happen?

To help us better share and better report on the resource.

Victoria has a large number of small groundwater management units which cover about 25 per cent of the state.

In the past, areas where groundwater was used were given a boundary and those areas with poorer quality groundwater where there was minimal use were not included.

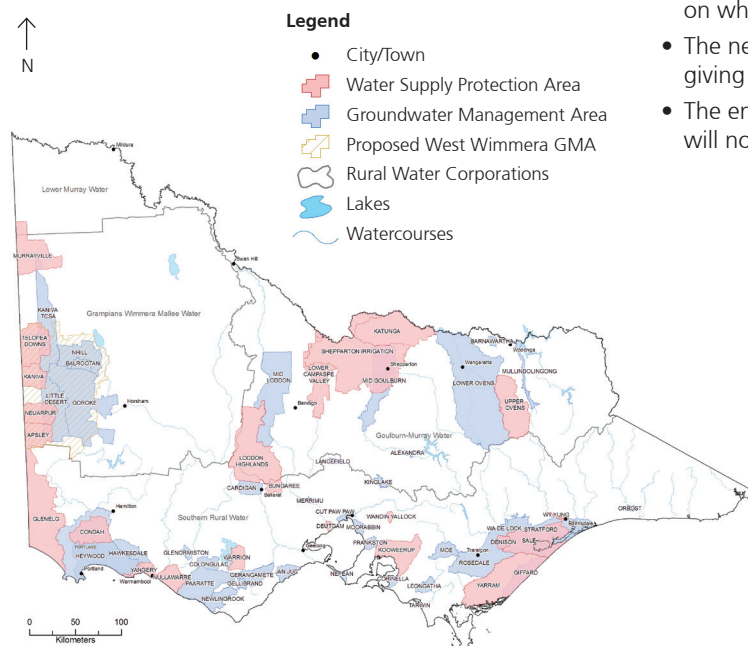
Existing boundaries do not necessarily properly align with underlying groundwater systems.

This has made it difficult for regional water plans to adequately share and report on water resources.

What does this mean for you, the groundwater user?

- Some licences may need to be updated once boundaries have been determined.
- The number of licences in your area may change depending on where the new boundaries are formed.
- The new boundaries may assist in trading over wider areas, giving you more chances to buy and sell groundwater.
- The entitlement volume and conditions on your licence will not change.

Victorian Groundwater Management Units





Development of the project

The new guidelines and boundaries will be developed in consultation with groundwater users urban water corporations and Catchment Management Authorities by:

The Department of Sustainability and Environment (DSE),
Goulburn-Murray Water (GMW),
Grampians Wimmera Mallee Water (GWMW),
Lower Murray Water and
Southern Rural Water (SRW).

For more information, refer to the websites below or contact the DSE Customer Service Centre on 136 186.

www.water.vic.gov.au

<http://www.g-mwater.com.au>

<http://www.gwmwater.org.au>

<http://www.srw.com.au>

The SAFE project will provide a recommended future framework for groundwater management boundaries in 2012, and has been funded through the National Water Commission's National Groundwater Action Plan to progress the way we manage groundwater in Victoria.

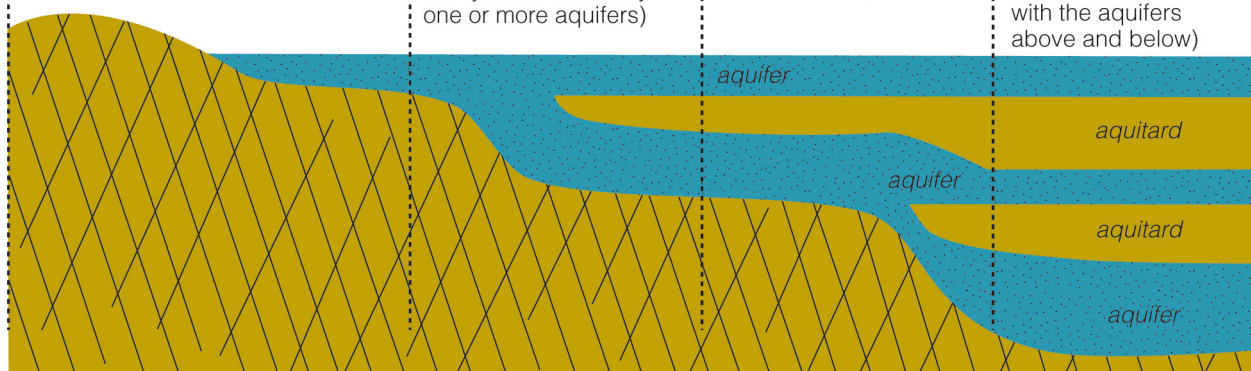
Groundwater systems

Upland valley system
(primarily fractured rock aquifers and alluvial filled valleys)

Upland layered valley system
(deeper, more permeable aquifer constrained in a valley and overlain by one or more aquifers)

Basin margin system
(multiple aquifers with varying interaction, but generally unconfined to semi-confined)

Basin systems
(multiple, large, generally single aquifer systems with limited connection with the aquifers above and below)



Published by the Victorian Government Department of Sustainability and Environment Melbourne, June 2011

© The State of Victoria Department of Sustainability and Environment 2011
This publication is copyright. No part may be reproduced by any process except in accordance with the provisions of the *Copyright Act 1968*.

Authorised by the Victorian Government, 8 Nicholson Street, East Melbourne.

Printed by Stream Solutions. Printed on 100% Recycled paper.

ISBN [Insert number for print and/or online]

For more information contact the DSE Customer Service Centre 136 186.

Disclaimer

This publication may be of assistance to you but the State of Victoria and its employees do not guarantee that the publication is without flaw of any kind or is wholly appropriate for your particular purposes and therefore disclaims all liability for any error, loss or other consequence which may arise from you relying on any information in this publication.

Accessibility

If you would like to receive this publication in an accessible format, such as large print or audio, please telephone 136 186, or through the National Relay Service (NRS) using a modem or textphone/teletypewriter (TTY) by dialling 1800 555 677, or email customer.service@dse.vic.gov.au

This document is also available in PDF format on the internet at www.dse.vic.gov.au