

GOULBURN-MURRAY  
**WATER**



# **Water Resources and Outlooks**

**Effective with 15 January 2009 Allocation**

#2585209



# Outline

- Allocations
- Water resources
- Rainfall (outlook and actual)
- Inflows
- Operations planning



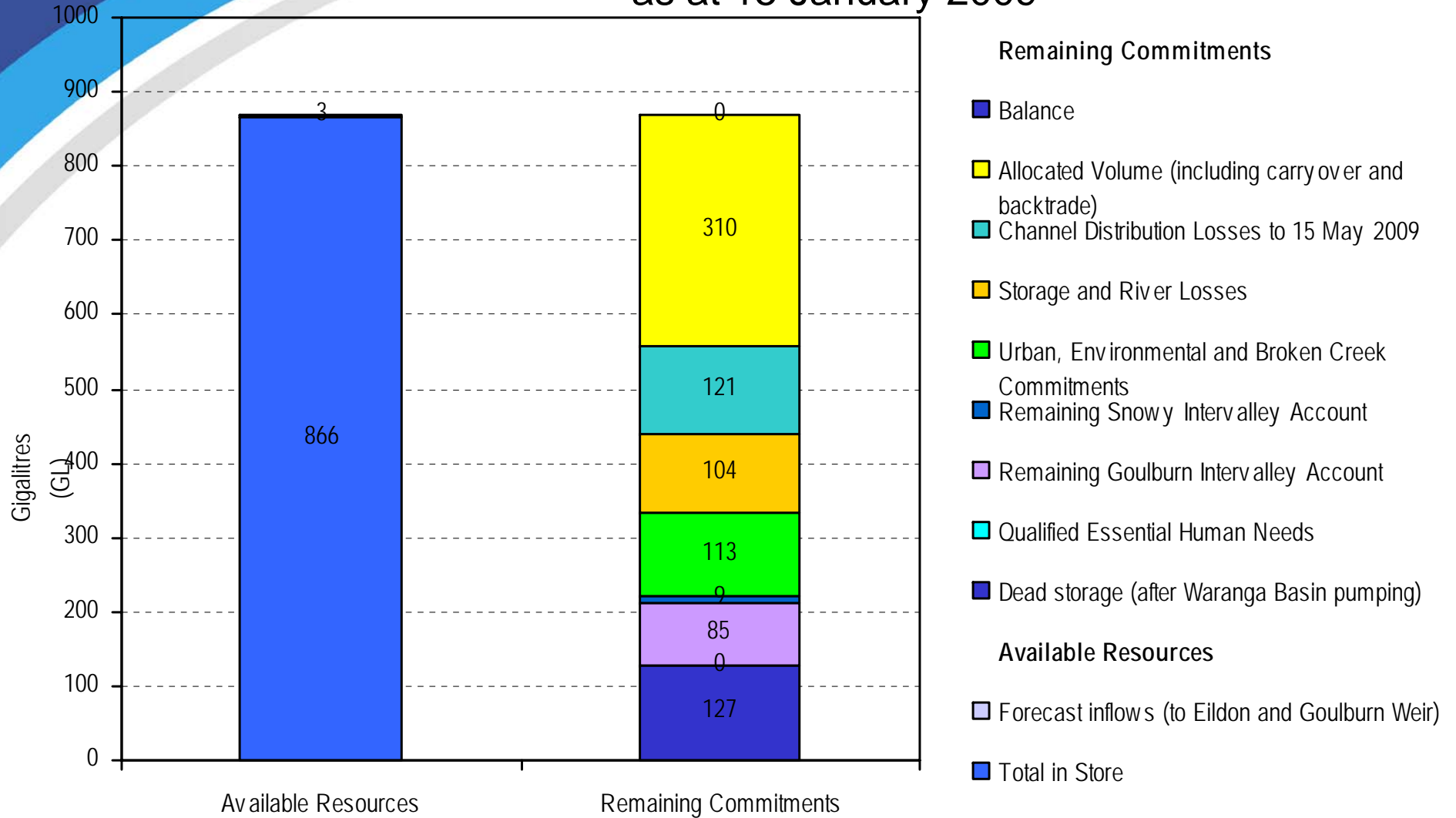
# Allocations at 15 Jan 2009

<b>Water System</b>	<b>2008/09 (%HRWS)</b>	<b>2007/08 (%HRWS)</b>
Murray	35%	34%
Broken	0%	56%
Goulburn	29%	47%
Campaspe	0%	12%
Loddon	0%	5%
Bullarook	0%	0%



# Goulburn System

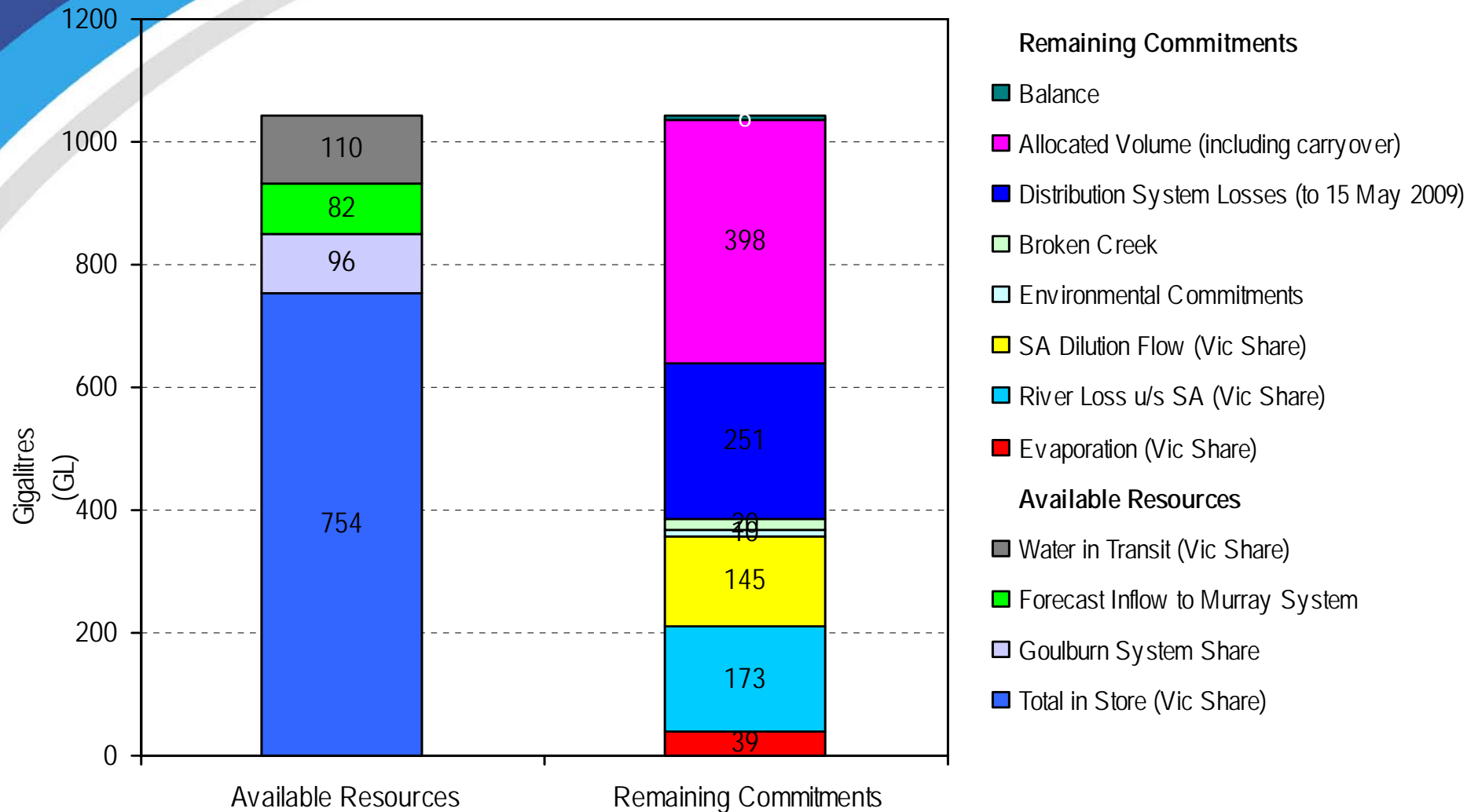
Breakdown of Water in Store and Commitments  
as at 15 January 2009





# Murray System

Breakdown of Water in Store and Commitments  
as at 15 January 2009





# Storage Volumes at 13 Jan

<b>Storage</b>	<b>2008 (GL)</b>	<b>2007 (GL)</b>
Eildon	727.1	776.9
Waranga Basin	128.8	128.5
Nillahcootie	11.6	14.7
Mokoan	9.4	34.1
Eppalock (G-MW)	3.2	18.3
Cairn Curran	6.5	10.8
Tullaroop	3.5	5.4

NOTE: 15 January 2009 allocations are based on 13 January 2009 volumes



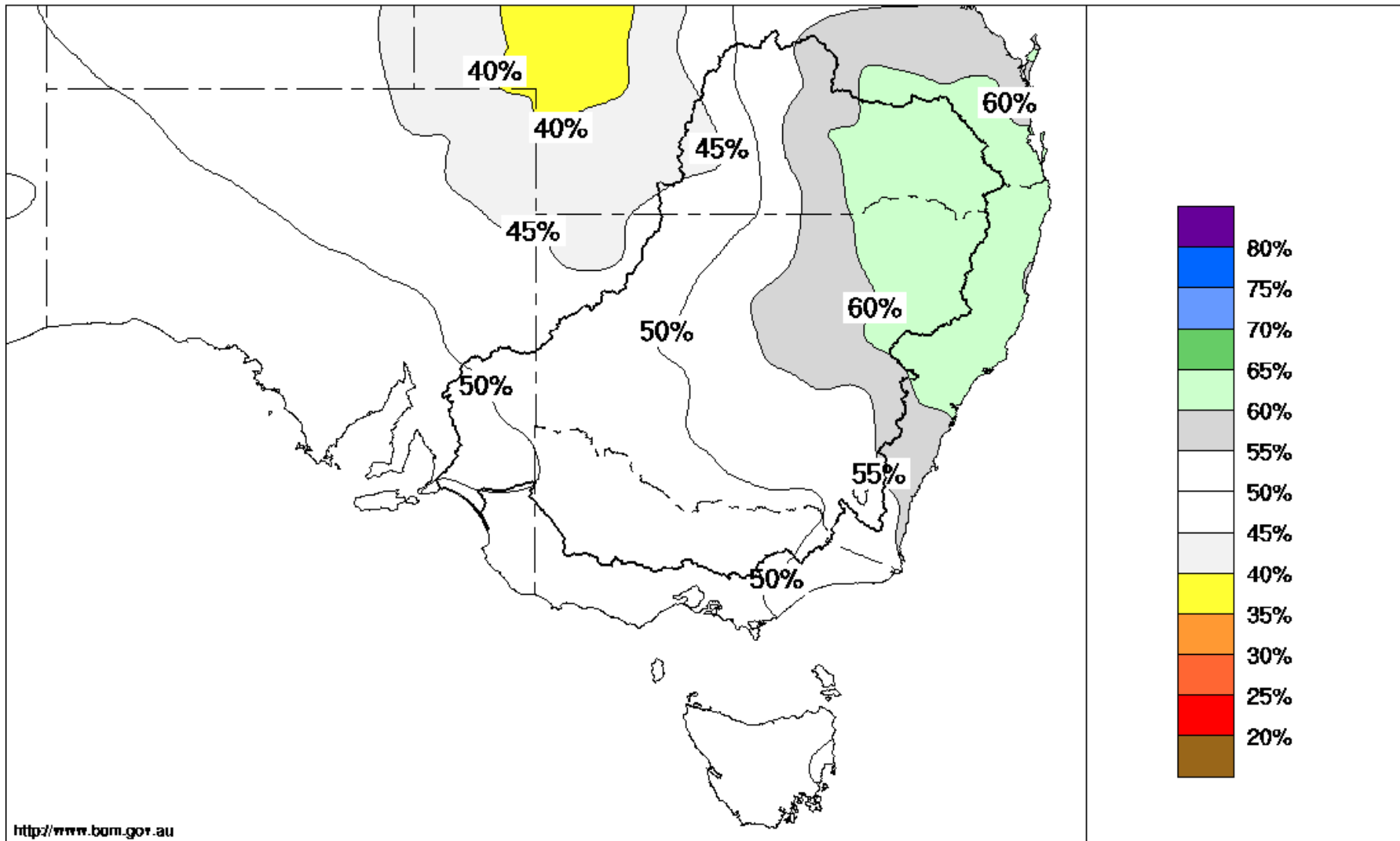
# Storage Volumes at 13 Jan

Storage	2009 (GL)	2008 (GL)
Dartmouth (Total)	885	674
Dartmouth (Vic active)*	475	439
Hume (Total)	662	619
Hume (Vic active)*	317	377
Buffalo	23.3	23.3
William Hovell	13.3	13.6

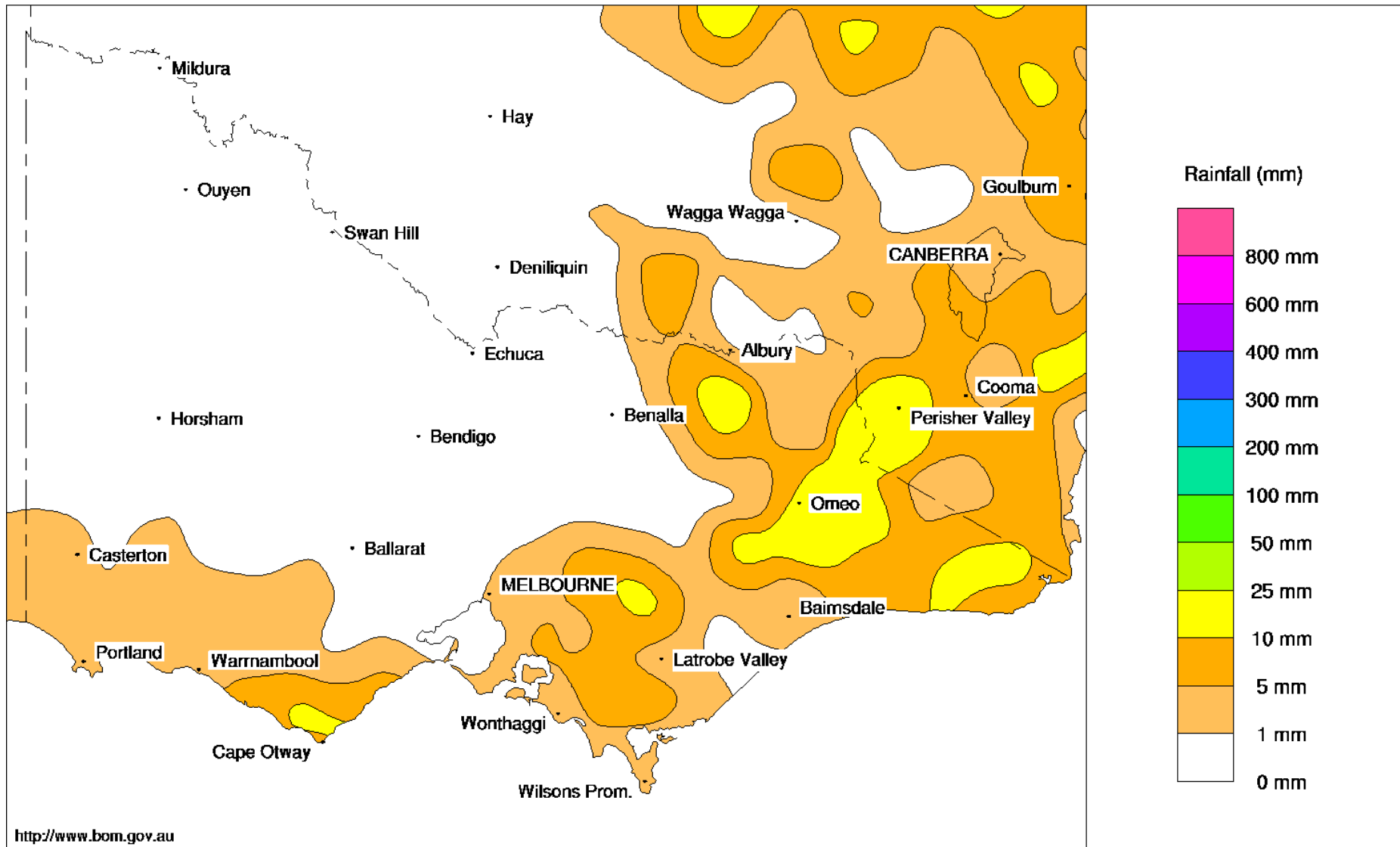
\* Vic active at end of December

# Chance of exceeding the median Rainfall January to March 2009

Product of the National Climate Centre



Victorian Rainfall (mm) 1st to 13th January 2009  
 Product of the National Climate Centre



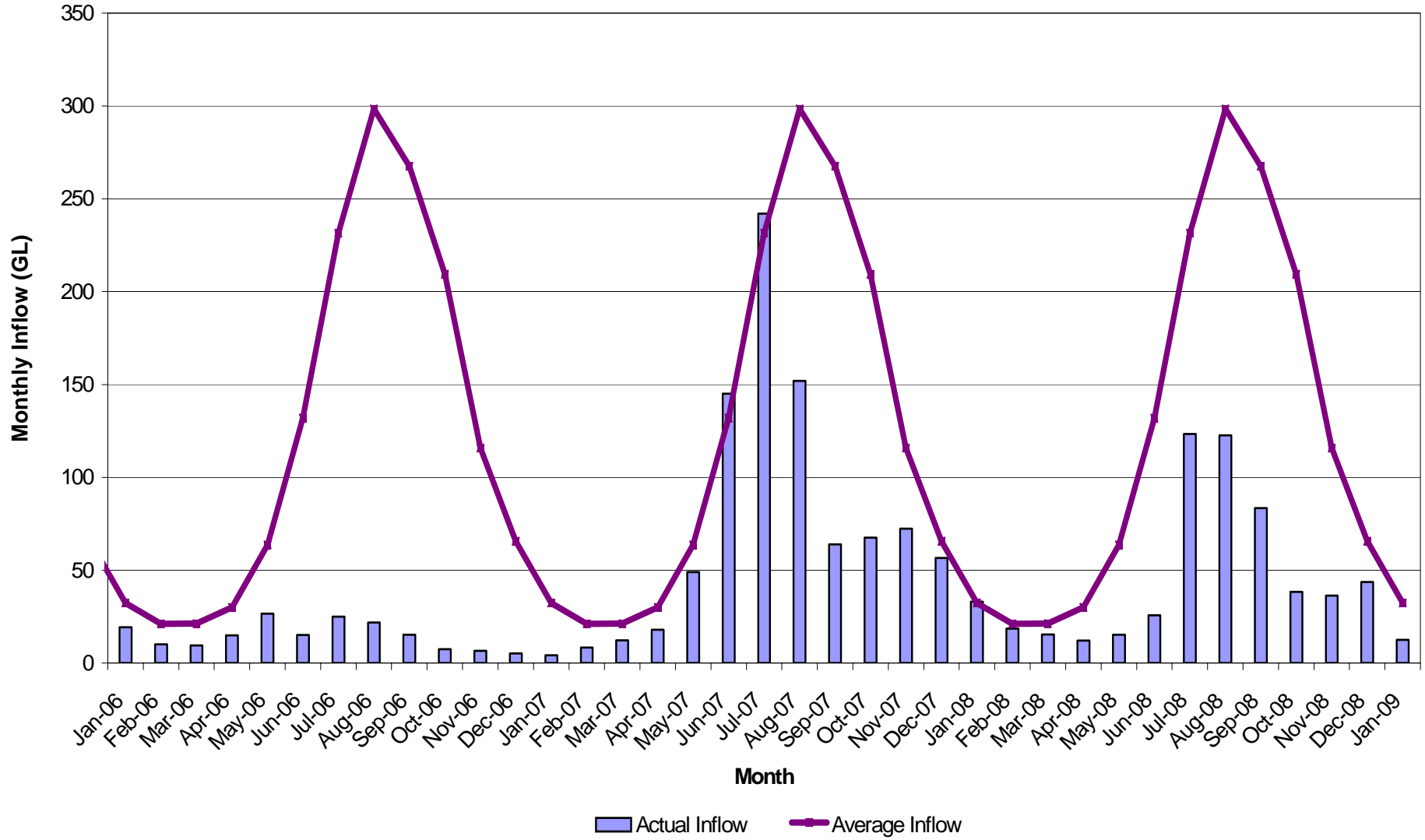
<http://www.bom.gov.au>

© Commonwealth of Australia 2009, Australian Bureau of Meteorology

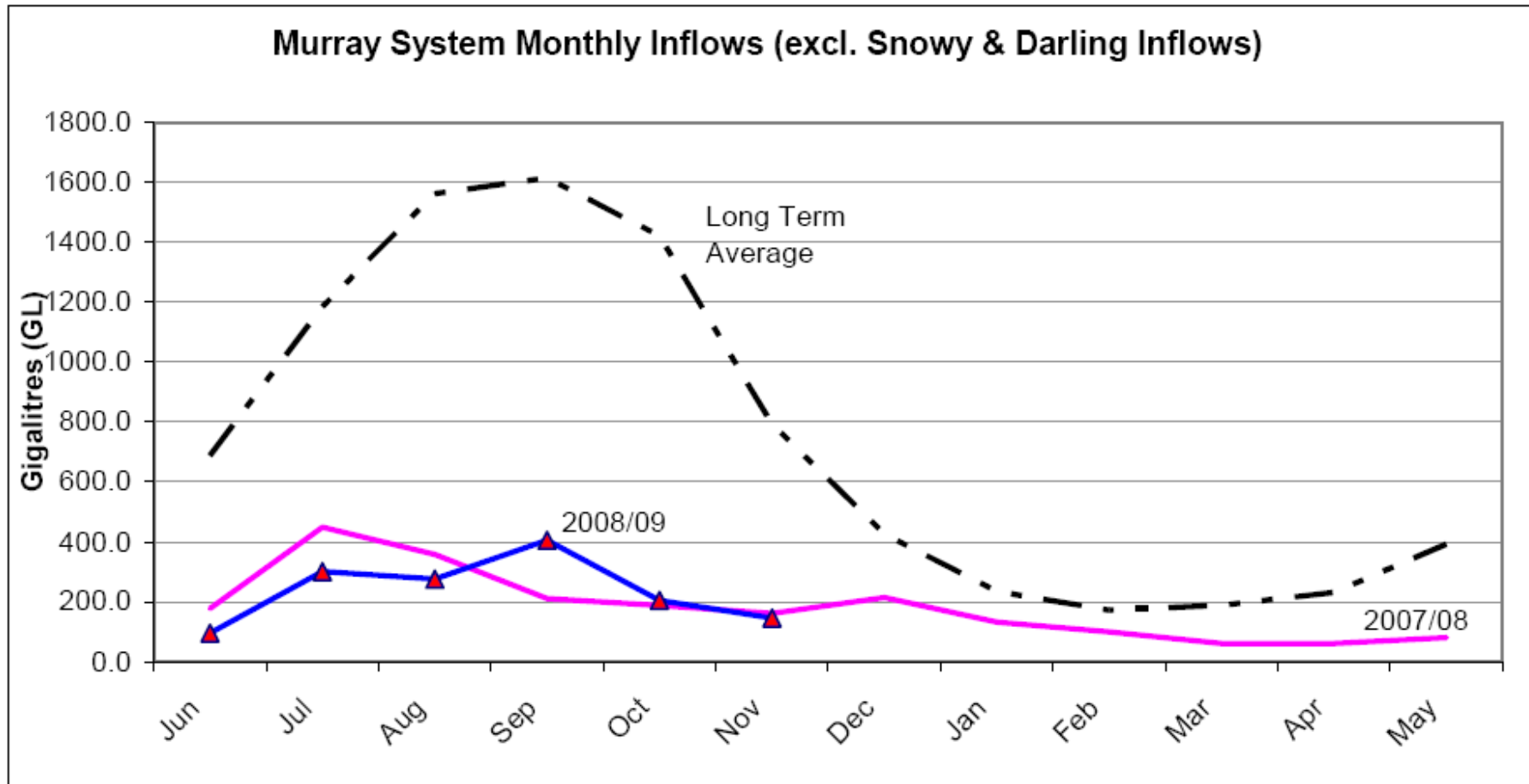
Issued: 13/01/2009

January Rainfall Across Victoria to 13 January 2009

# Inflows to Lake Eildon as at 14 January

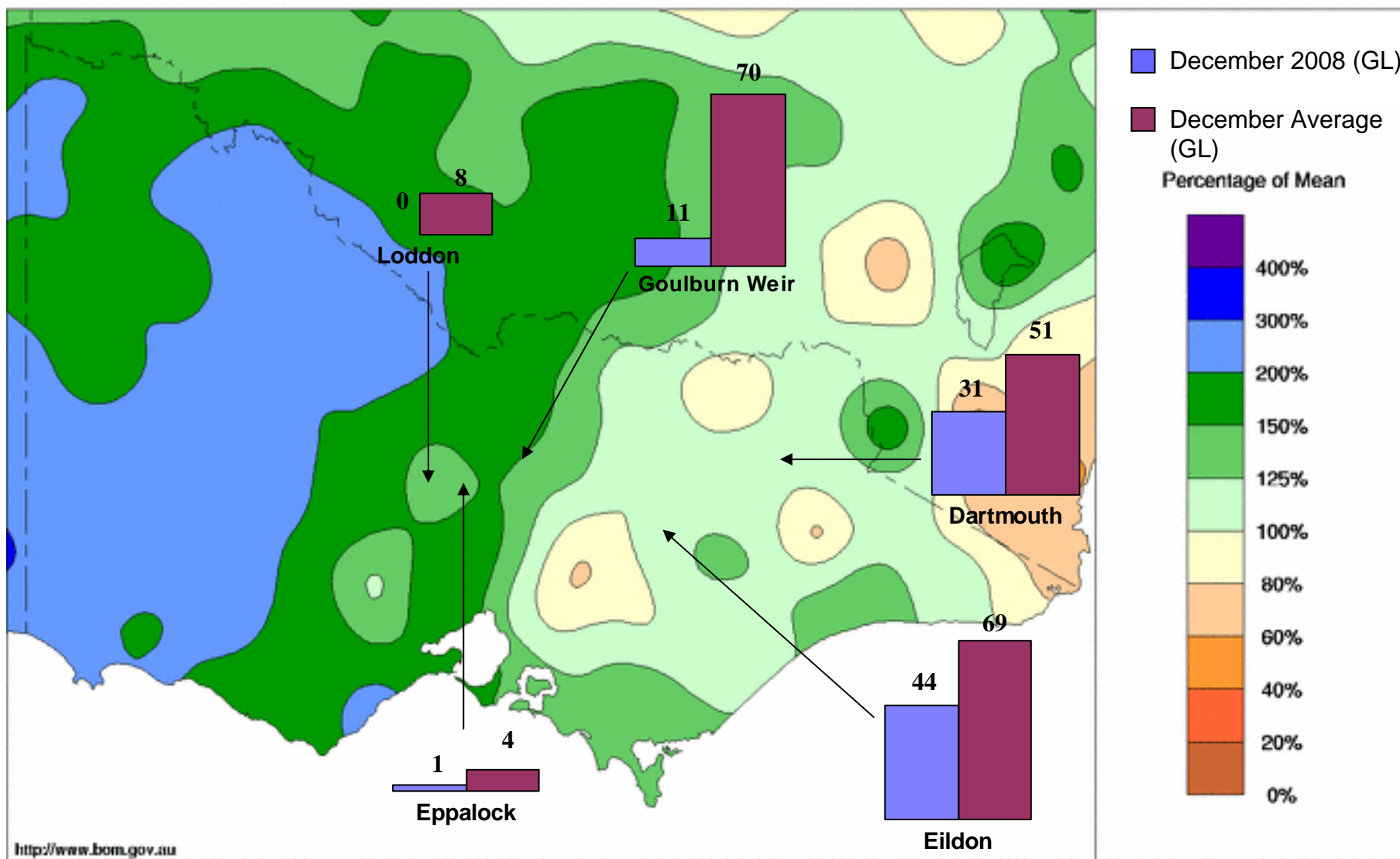


# Inflows to River Murray (excl Snowy and Darling)



# Rainfall Percentages - Month To Date 1st to 30th December 2008

Product of the National Climate Centre



<http://www.bom.gov.au>



# Inflows to 14 January 2009

<b>Storage</b>	<b>Inflow (GL)</b>	<b>% Average</b>	<b>% POE</b>
Dartmouth	4.7	16%	98.3%
Eildon	12.5	38%	86.3%
Goulburn Weir	13.7	20%	97%
Nillahcootie	0.0	0%	N/A
Eppalock	0.0	0%	N/A
Loddon	0.0	0%	N/A



# Shortfalls at 13 Jan 2009

<b>System</b>	<b>Shortfall (GL)</b>
Broken	1.1
Campaspe	4.8
Loddon	7.2
Bullarook	0.4



# Operating Plans

- Murray and Goulburn areas and rivers
  - Irrigation, carryover and D&S available for season
  - Strict system operations to minimise losses
- Broken, Campaspe, Loddon and Bullarook systems
  - Allocations unlikely this season
  - Limited reserves for standard delivery mechanisms



## Qualifications of Rights

- Murray and Goulburn systems **do not** have access to qualified rights since allocation >20%
  - All 2008/09 use must be met by allocation
- All other systems retain access to qualified rights



# Use under Qualified Rights

1. All **usage** will be accounted through **metering or deeming** against the allocation available in your allocation bank account
2. If your allocation does not meet your essential needs as specified in the Qualification of Rights, then **additional usage to meet those essential needs** is permitted under the qualification



## Use under Qualified Rights

3. If you plan to irrigate or trade your allocation, you should **plan to retain enough allocation to meet your essential needs** throughout the season
4. Under **no** circumstances can usage under the qualification **exceed** the volume of your high-reliability water share



## Conclusions

- Murray and Goulburn allocation improvements
  - Minor inflows
  - Better than worst case conditions
- All other catchments
  - Shortfalls remain significant
  - Strict operations must remain in place