

GOULBURN-MURRAY
WATER



Water Resources and Outlooks

Effective with 2 February 2009 Allocation

#2586843



Outline

- Allocations
- Water resources
- Rainfall (outlook and actual)
- Inflows
- Operations planning



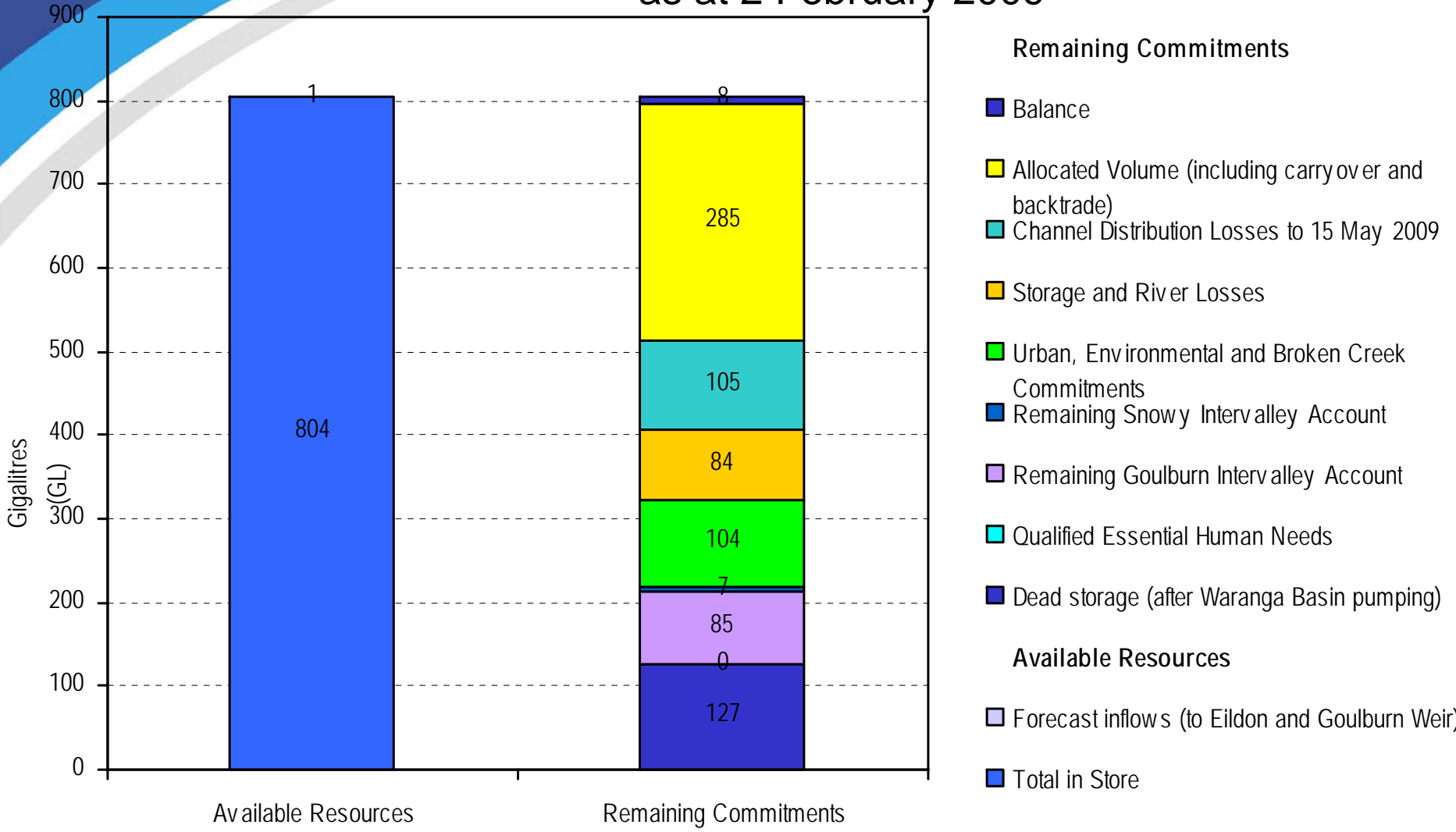
Allocations at 2 Feb 2009

Water System	2008/09 (%HRWS)	2007/08 (%HRWS)
Murray	35%	36%
Broken	0%	65%
Goulburn	29%	51%
Campaspe	0%	14%
Loddon	0%	5%
Bullarook	0%	0%



Goulburn System

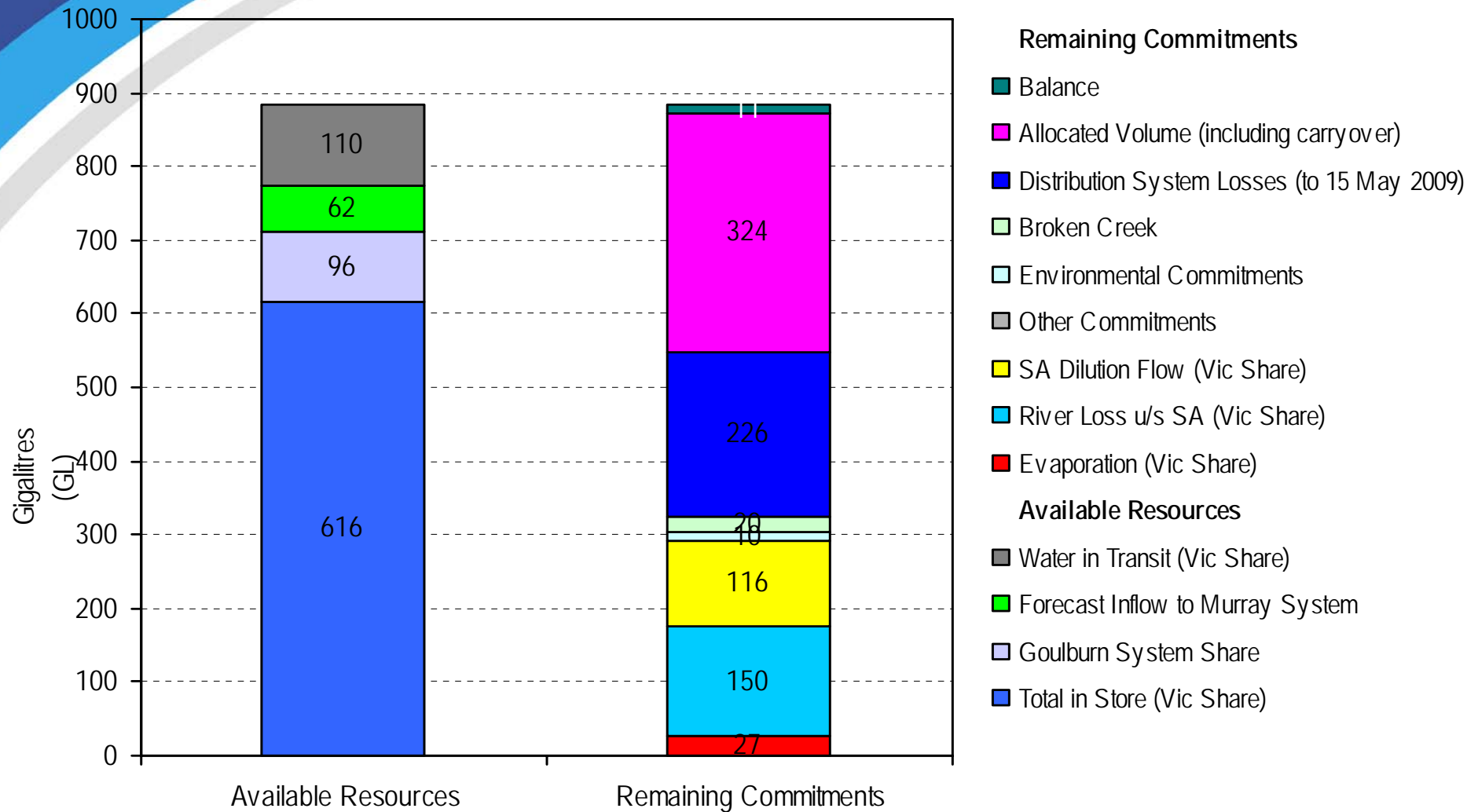
Breakdown of Water in Store and Commitments
as at 2 February 2009





Murray System

Breakdown of Water in Store and Commitments
as at 2 February 2009





Storage Volumes at 29 Jan

Storage	2009 (GL)	2008 (GL)
Eildon	659.6	743.7
Waranga Basin	138.1	134.2
Nillahcootie	10.9	14.4
Eppalock (G-MW)	3.1	12.1
Cairn Curran	5.6	10.4
Tullaroop	3.3	5.0

NOTE: 2 February 2009 allocations are based on 29 January 2009 volumes

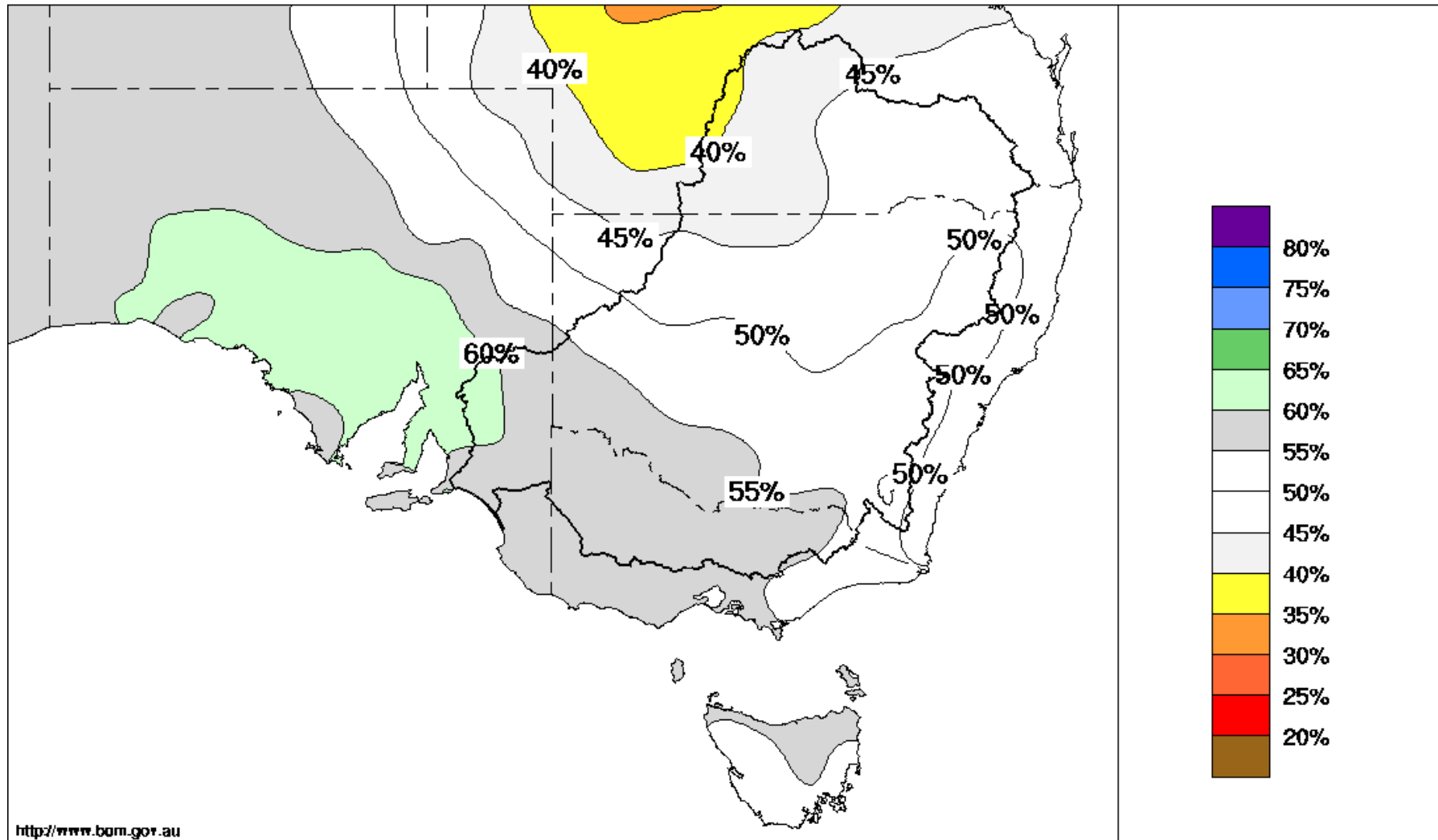


Storage Volumes at 29 Jan

Storage	2009 (GL)	2008 (GL)
Dartmouth (Total)	885	674
Dartmouth (Vic active)*	475	439
Hume (Total)	662	619
Hume (Vic active)*	317	377
Buffalo	21.7	23.3
William Hovell	12.2	13.6

* Vic active, Dartmouth total and Hume total at end of December. RMW assessment hasn't been updated since end of December assessment.

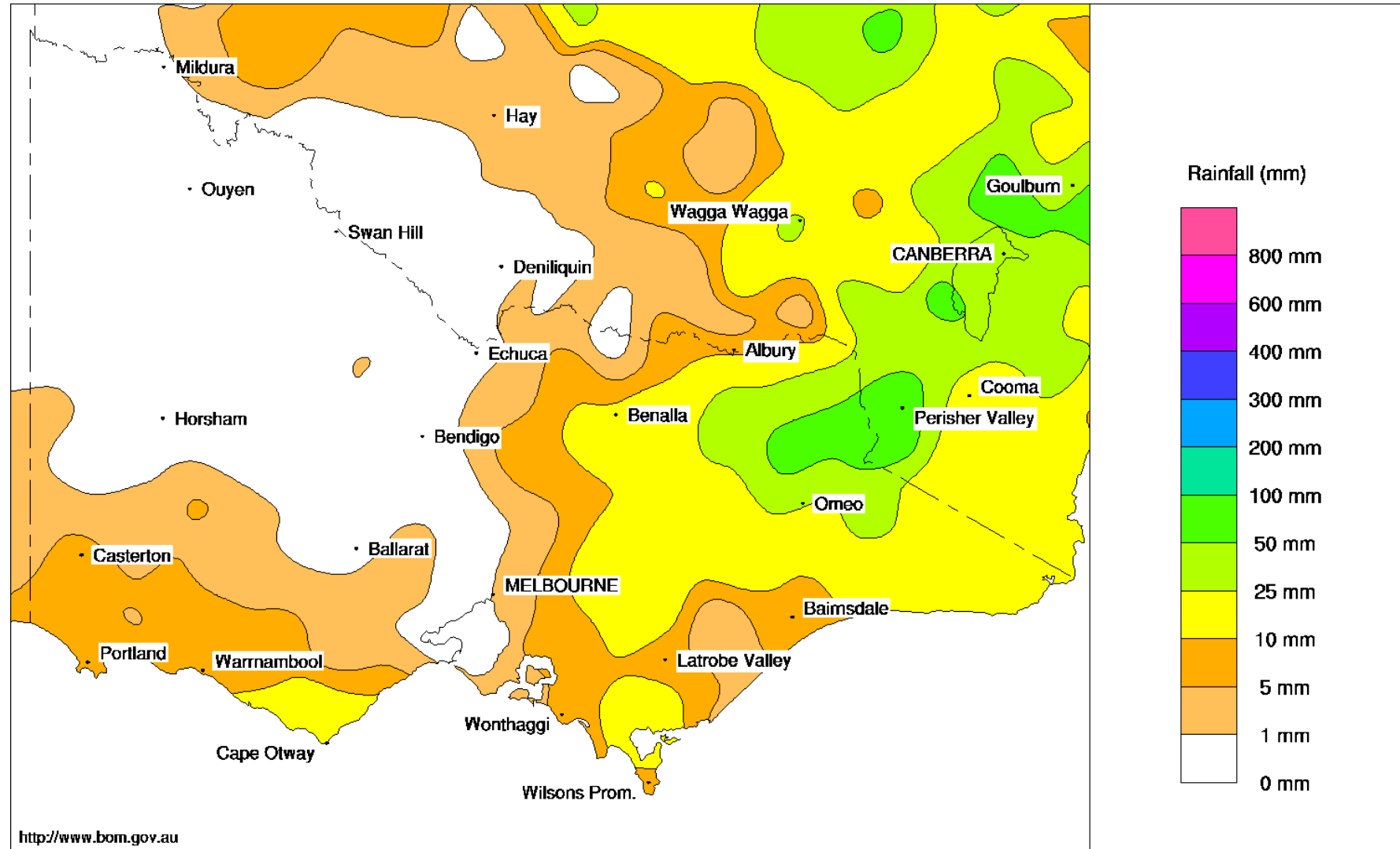
Chance of exceeding the median Rainfall February to April 2009
Product of the National Climate Centre



Victorian Rainfall (mm)

January 2009

Product of the National Climate Centre

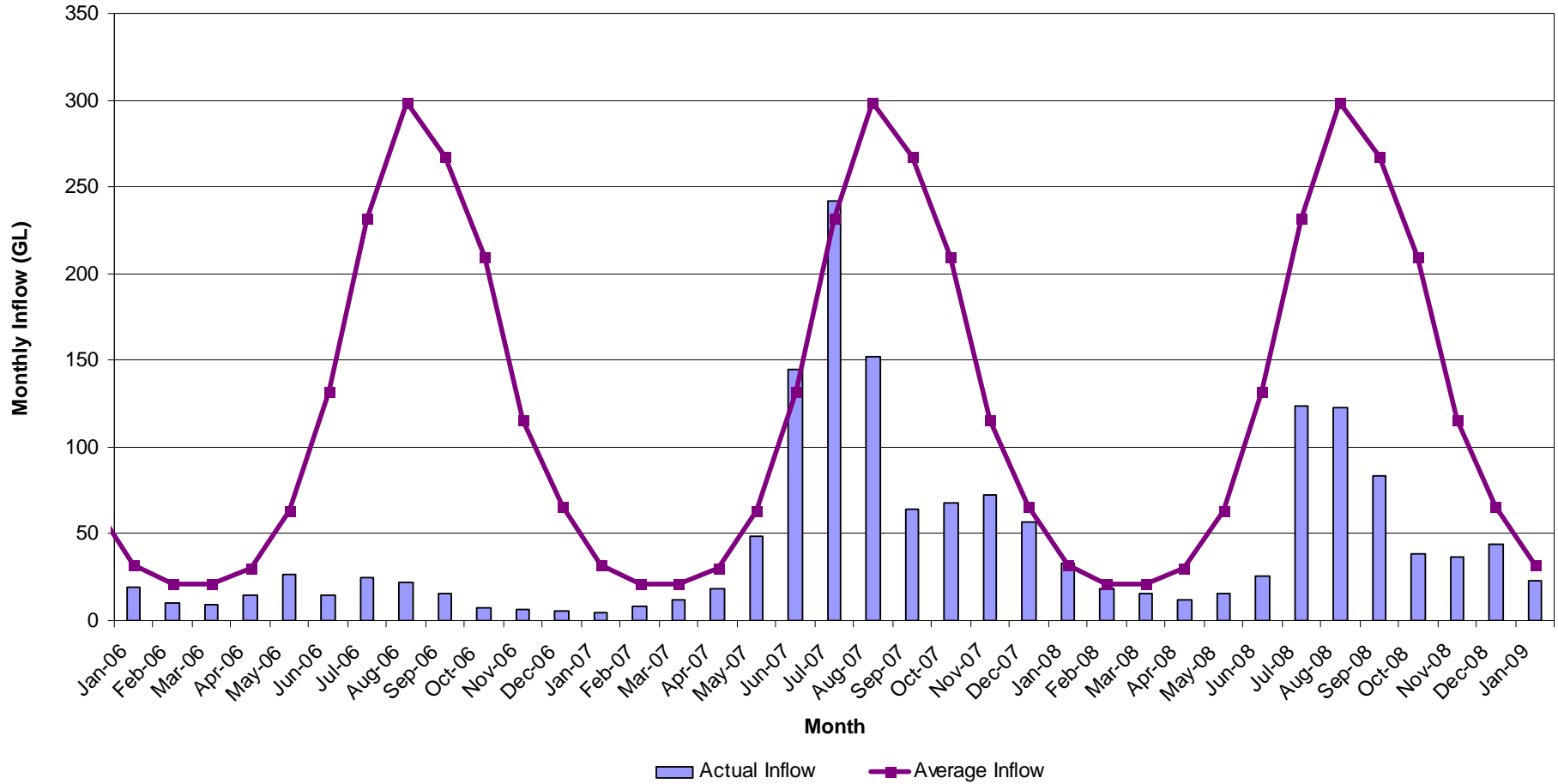


© Commonwealth of Australia 2009, Australian Bureau of Meteorology

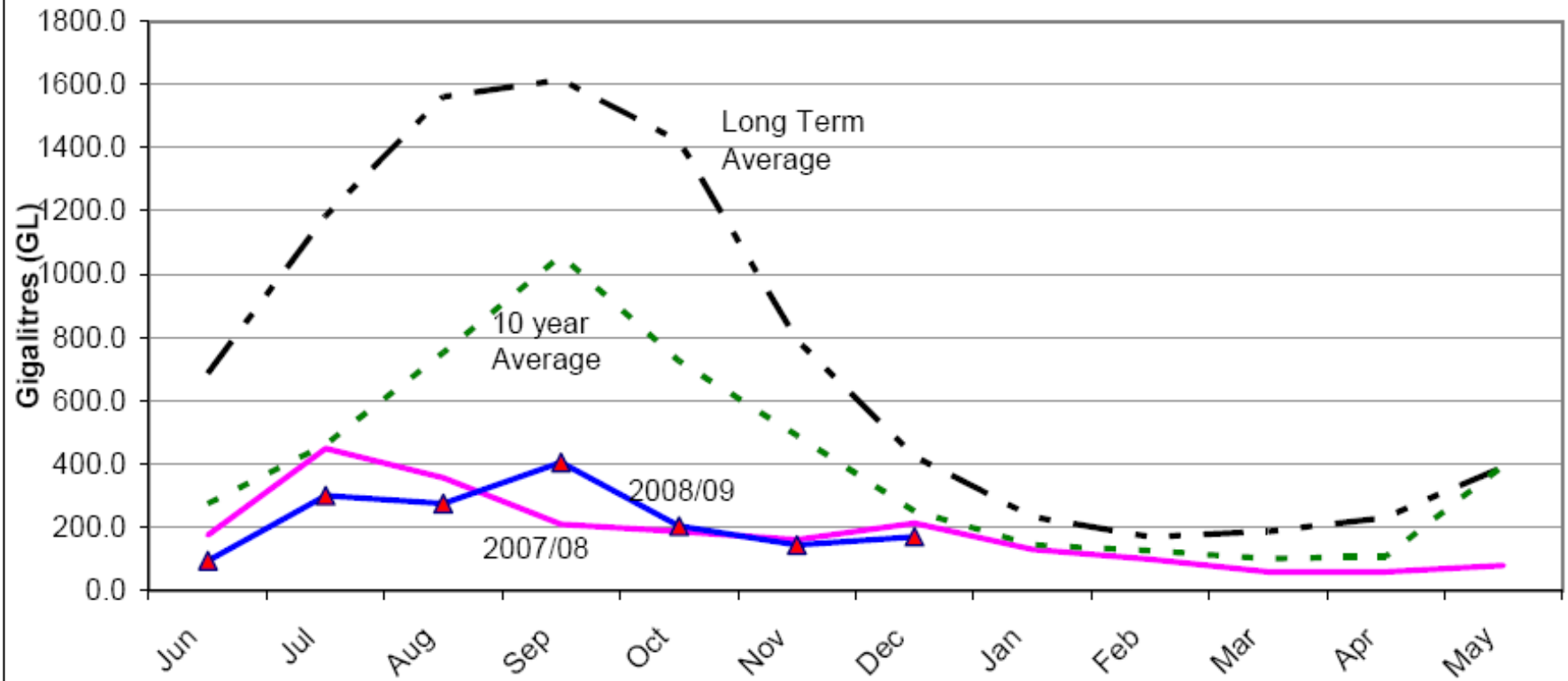
Issued: 02/02/2009

January Rainfall Across Victoria

Inflows to Lake Eildon

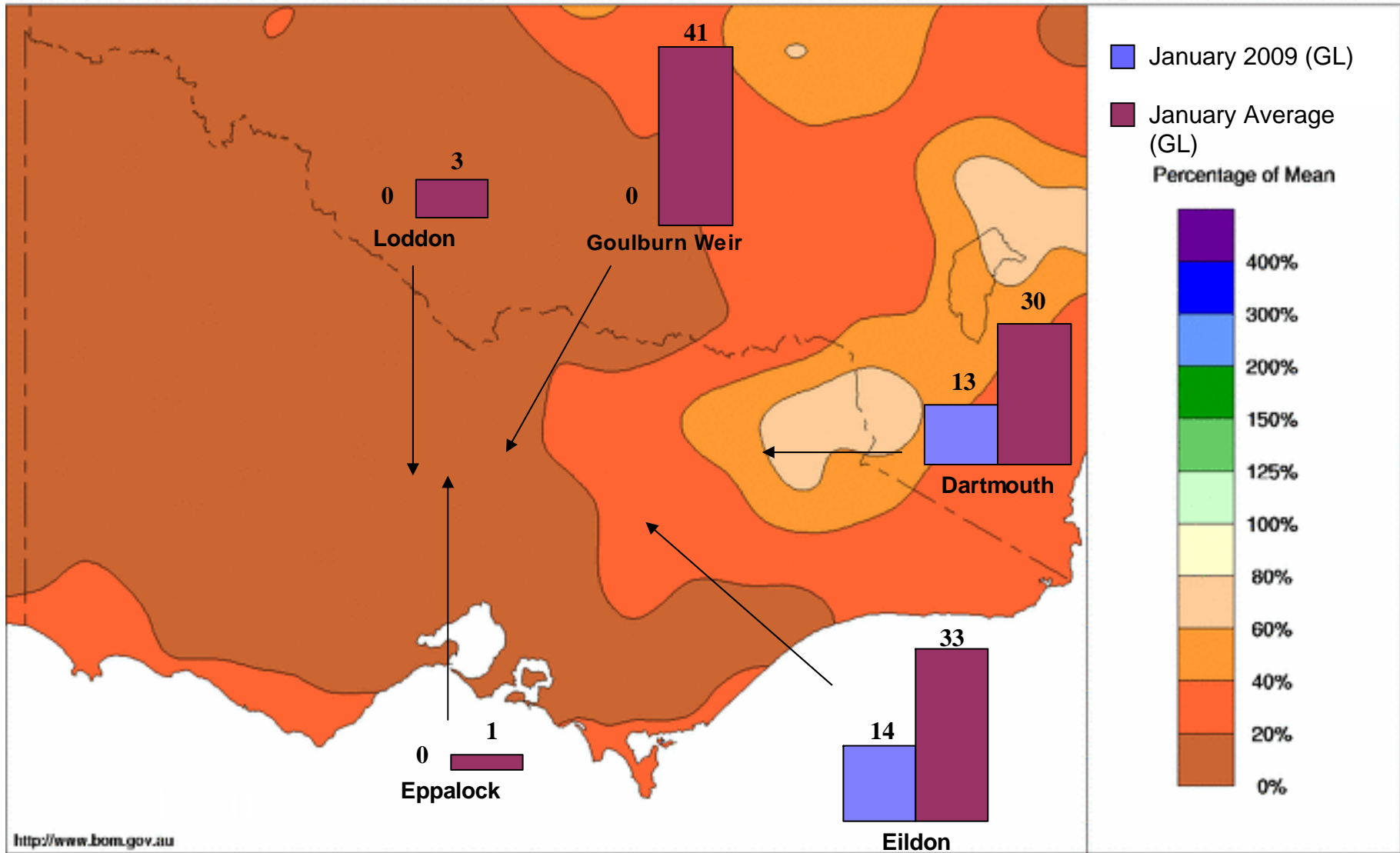


Murray System Monthly Inflows (excl. Snowy & Darling Inflows)



Rainfall Percentages - Month To Date 1st to 29th January 2009

Product of the National Climate Centre



<http://www.bom.gov.au>

© Commonwealth of Australia 2009, Australian Bureau of Meteorology

Issued: 29/01/2009



Inflows to 30 January 2009

Storage	Inflow (GL)	% Average	% POE
Dartmouth	12.6	42%	81.0%
Eildon	14.4	44%	81.5%
Goulburn Weir	0.0	0%	99.5%
Nillahcootie	0.0	0%	99.5%
Eppalock	0.0	0%	99.5%
Loddon	0.0	0%	99.5%



Shortfalls at 2 Feb 2009

System	Shortfall (GL)
Broken	3.0
Campaspe	4.0
Loddon	7.7
Bullarook	0.4



Operating Plans

- Murray and Goulburn areas and rivers
 - Irrigation, carryover and D&S available for season
 - Strict system operations to minimise losses
- Broken, Campaspe, Loddon and Bullarook systems
 - Allocations unlikely this season
 - Limited reserves for standard delivery mechanisms



Qualifications of Rights

- Murray and Goulburn systems **do not** have access to qualified rights since allocation >20%
 - All 2008/09 use must be met by allocation
- All other systems retain access to qualified rights



Use under Qualified Rights

1. All **usage** will be accounted through **metering or deeming** against the allocation available in your allocation bank account
2. If your allocation does not meet your essential needs as specified in the Qualification of Rights, then **additional usage to meet those essential needs** is permitted under the qualification



Use under Qualified Rights

3. If you plan to irrigate or trade your allocation, you should **plan to retain enough allocation to meet your essential needs** throughout the season
4. Under **no** circumstances can usage under the qualification **exceed** the volume of your high-reliability water share



Conclusions

- No improvements for the Murray and Goulburn systems
- Other catchments
 - Shortfalls remain significant
 - Strict operations must remain in place