

GOULBURN-MURRAY
WATER



Water Resources and Outlooks

Effective with 16 March 2009 Allocation

#2613791



Outline

- Allocations
- Water resources
- Rainfall (outlook and actual)
- Inflows
- Operations planning



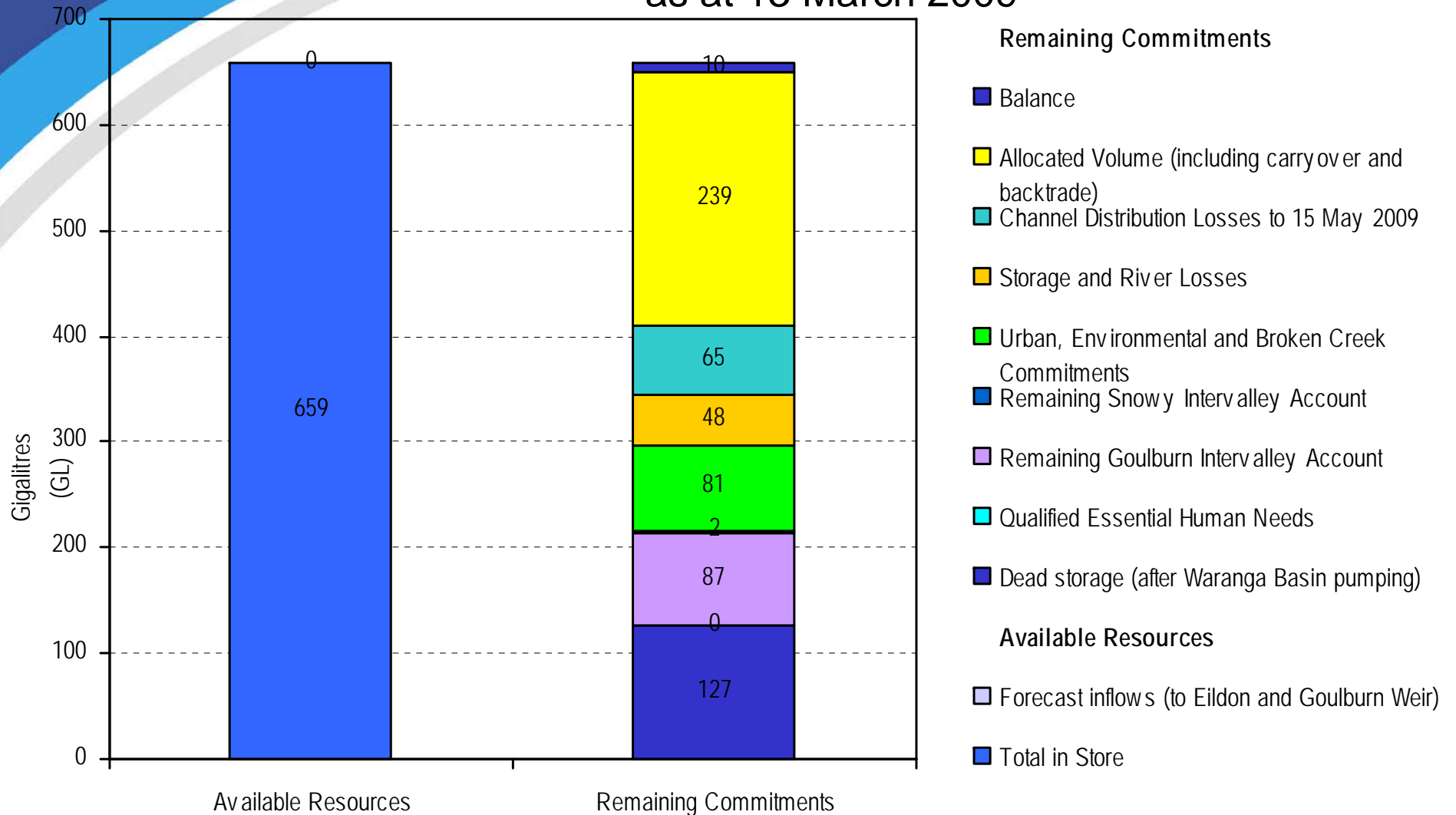
Allocations at 16 March 2009

Water System	2008/09 (%HRWS)	2007/08 (%HRWS)
Murray	35%	43%
Broken	0%	70%
Goulburn	32%	55%
Campaspe	0%	18%
Loddon	0%	5%
Bullarook	0%	0%



Goulburn System

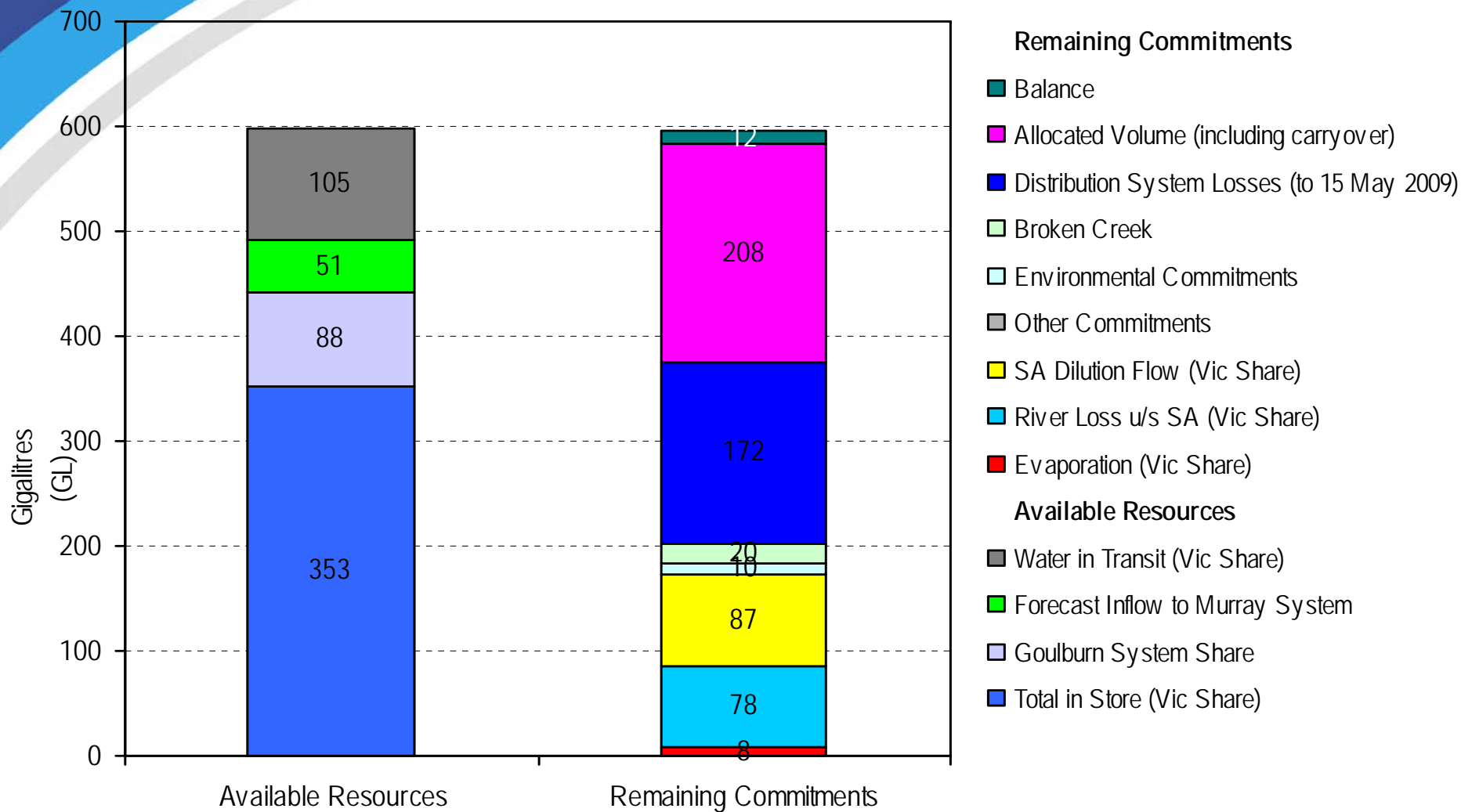
Breakdown of Water in Store and Commitments
as at 13 March 2009





Murray System

Breakdown of Water in Store and Commitments
as at 13 March 2009





Storage Volumes at 13 March

Storage	2009 (GL)	2008 (GL)
Eildon	501.2	573.9
Waranga Basin	134.2	143.2
Nillahcootie	7.7	12.0
Eppalock (G-MW)	3.6	8.8
Cairn Curran	3.8	8.8
Tullaroop	3.2	4.3

NOTE: 16 March 2009 allocations are based on 13 March 2009 volumes



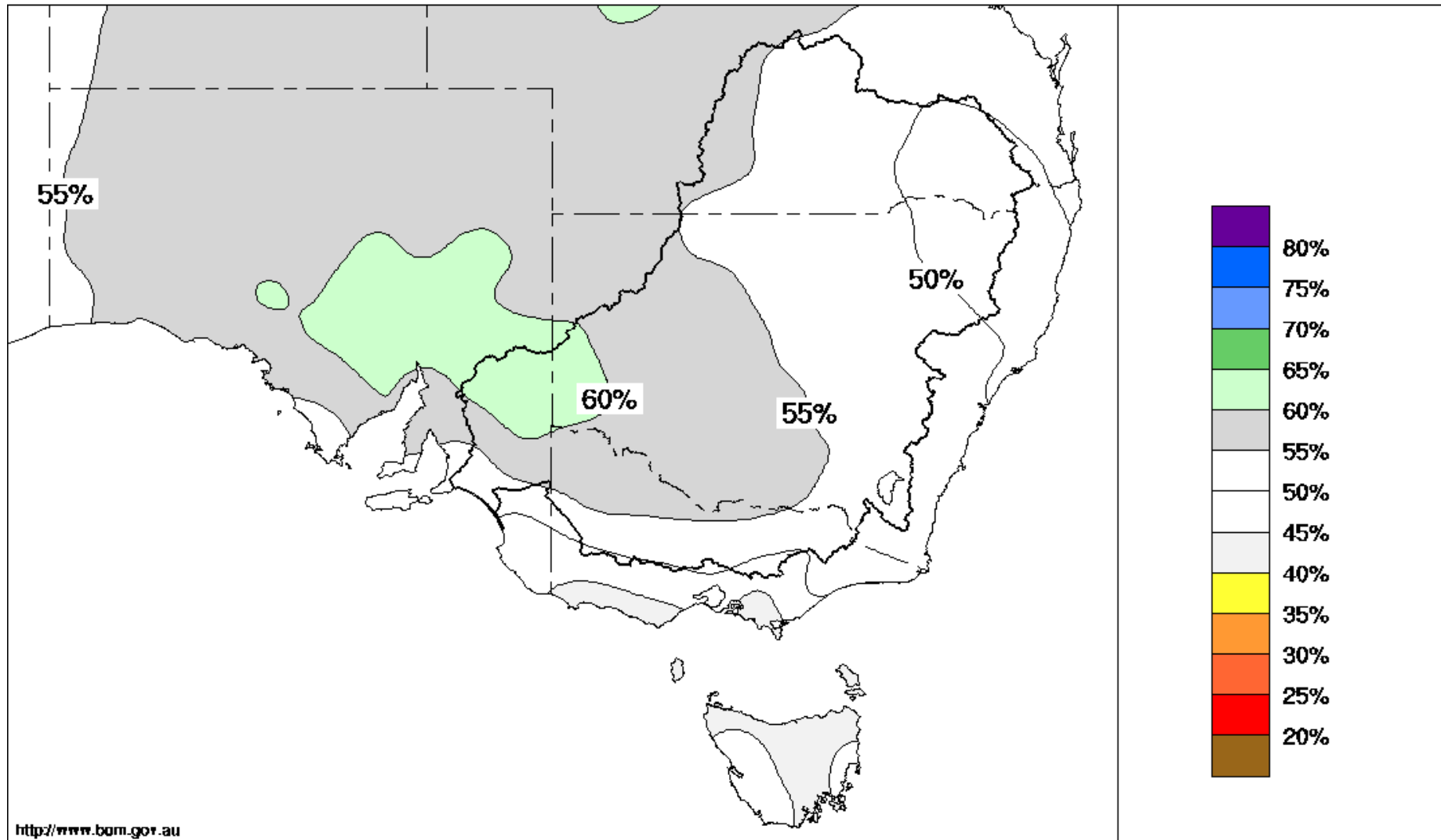
Storage Volumes at 13 March

Storage	2009 (GL)	2008 (GL)
Dartmouth (Total)	867	685
Dartmouth (Vic active)*	449	420
Hume (Total)	348	428
Hume (Vic active)*	52	198
Buffalo	13.1	22.4
William Hovell	7.7	11.8

* Vic active, Dartmouth total and Hume total at end of February.

Chance of exceeding the median Rainfall March to May 2009

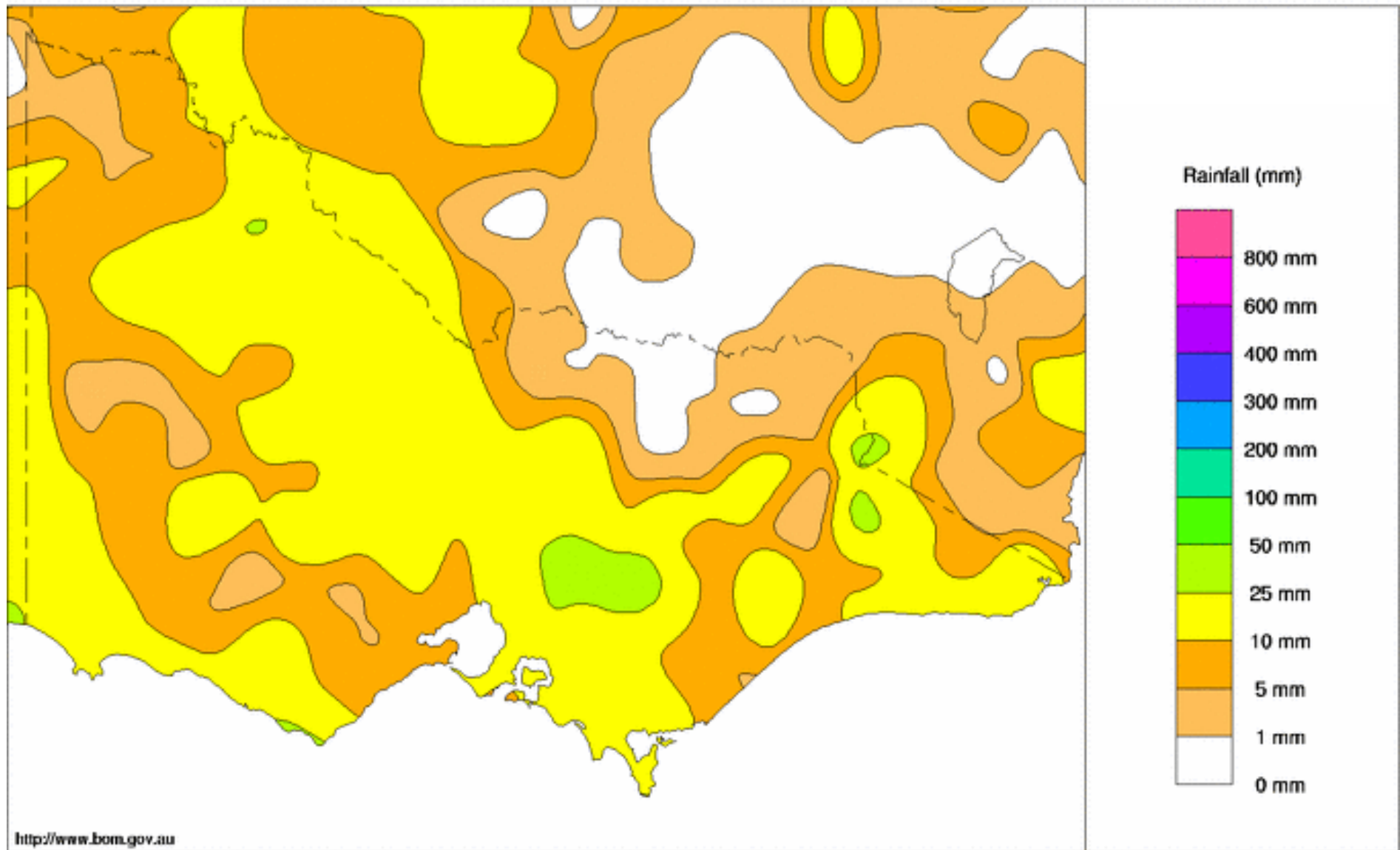
Product of the National Climate Centre



Victorian Rainfall (mm)

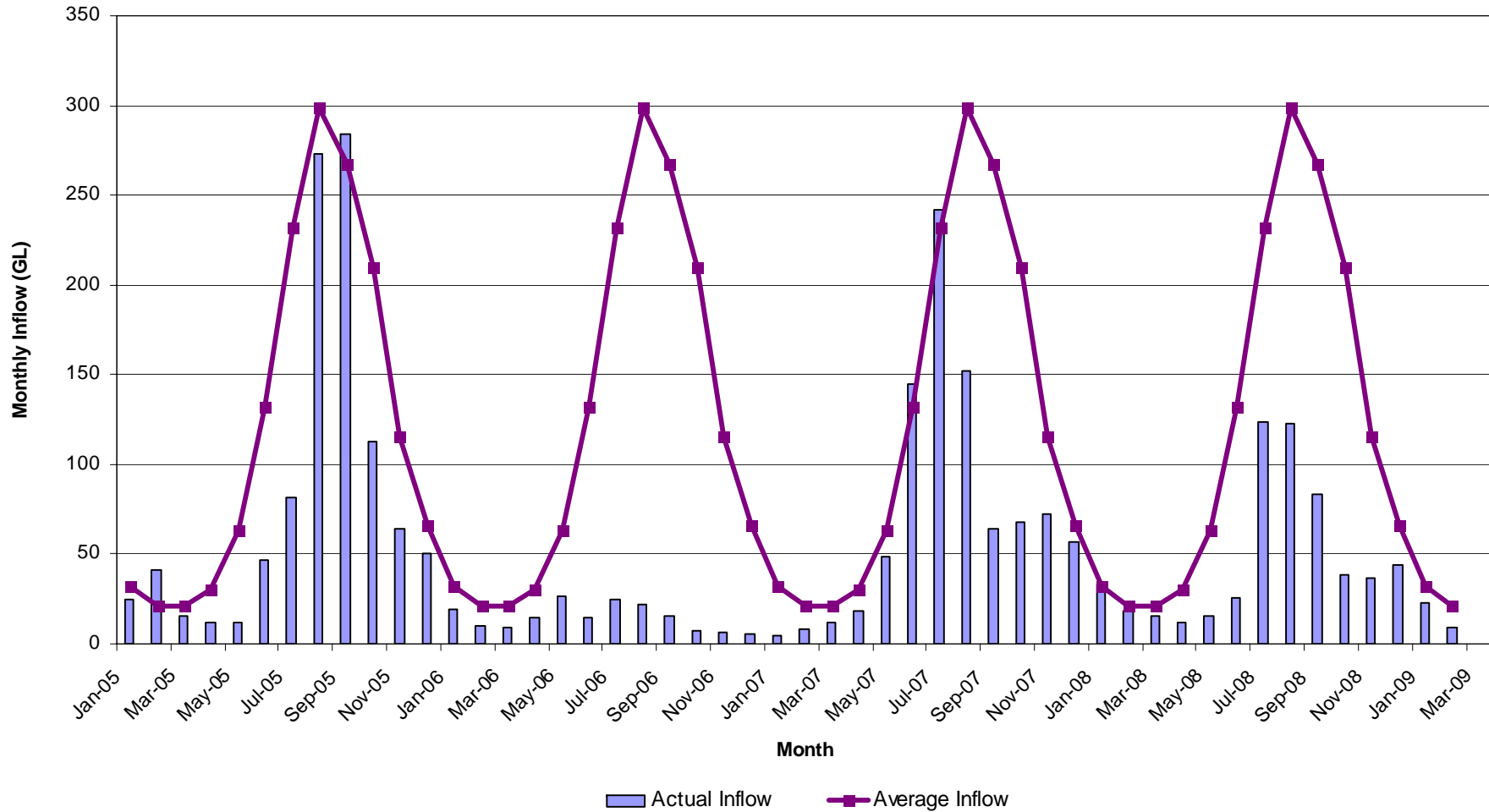
1st to 12th March 2009

Product of the National Climate Centre

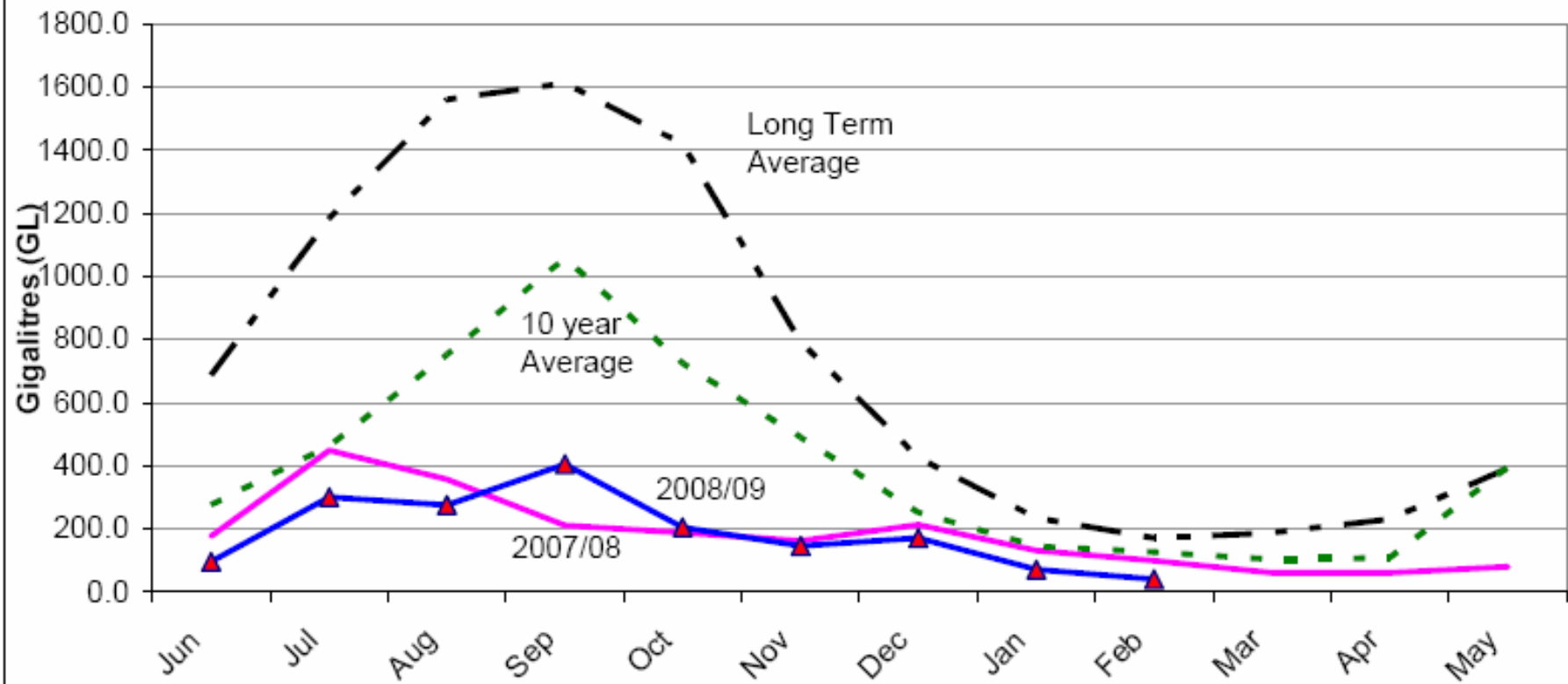


Rainfall Across Victoria to 12 March

Inflows to Lake Eildon as at 13 March 09



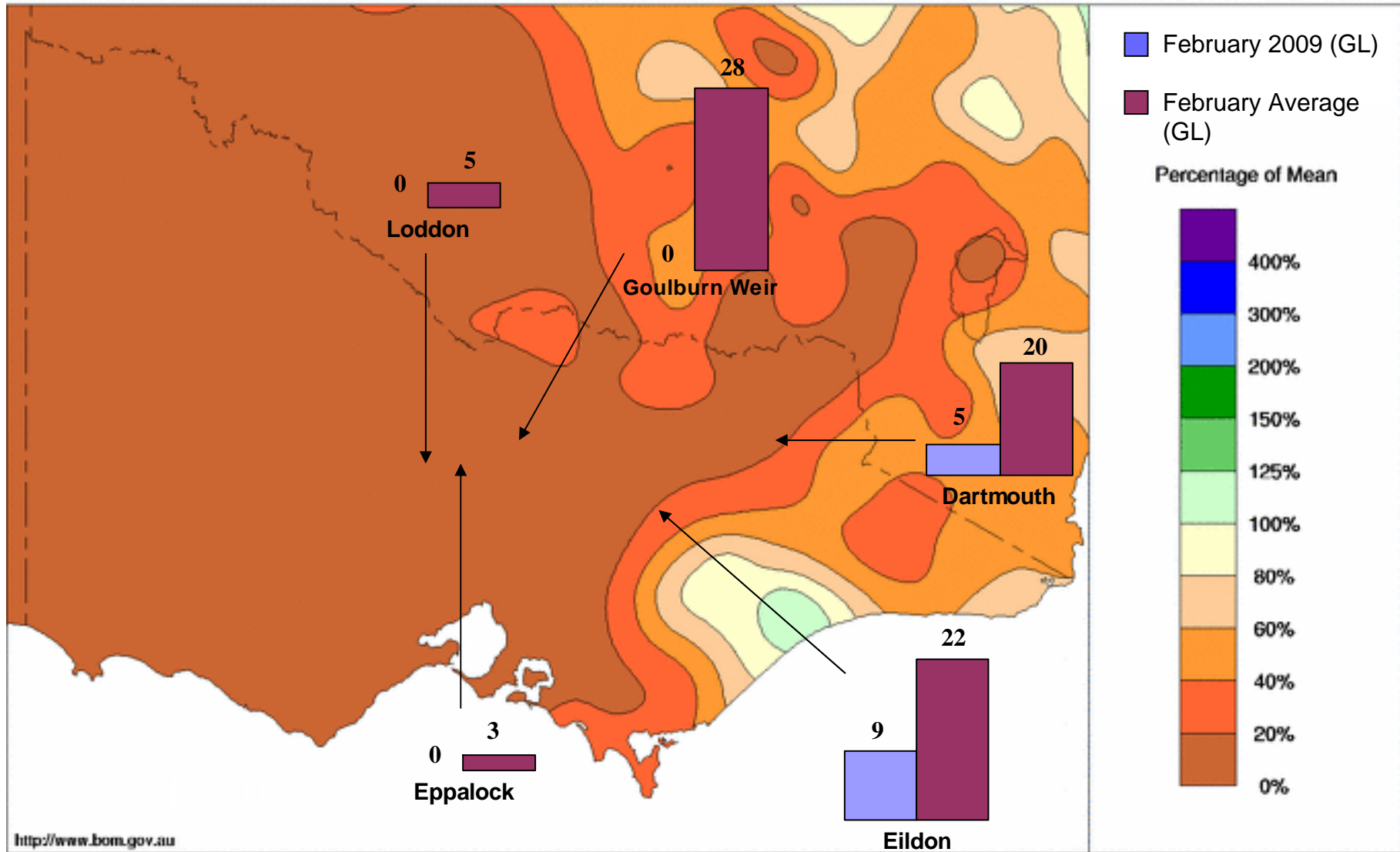
Murray System Monthly Inflows (excl. Snowy & Darling Inflows)



Victorian Rainfall

February 2009

Product of the National Climate Centre





Inflows to 13 March 2009

Storage	Inflow (GL)	% Average	% POE
Dartmouth	0	0%	>99.5%
Eildon	4.8	22%	87%
Goulburn Weir	5.4	16%	>99.5%
Nillahcootie	0.0	0%	80%
Eppalock	0.2	20%	49%
Loddon	0.0	0%	98%



Shortfalls at 16 March 2009

System	Shortfall (GL)
Broken	2.6
Campaspe	2.9
Loddon	6.6
Bullarook	0.3



Operating Plans

- Murray and Goulburn areas and rivers
 - Irrigation, carryover and D&S available for season
 - Strict system operations to minimise losses
- Broken, Campaspe, Loddon and Bullarook systems
 - Allocations unlikely this season
 - Limited reserves for standard delivery mechanisms



Qualifications of Rights

- Murray and Goulburn systems **do not** have access to qualified rights since allocation >20%
 - All 2008/09 use must be met by allocation
- All other systems retain access to qualified rights



Use under Qualified Rights

1. All **usage** will be accounted through **metering or deeming** against the allocation available in your allocation bank account
2. If your allocation does not meet your essential needs as specified in the Qualification of Rights, then **additional usage to meet those essential needs** is permitted under the qualification



Use under Qualified Rights

3. If you plan to irrigate or trade your allocation, you should **plan to retain enough allocation to meet your essential needs** throughout the season
4. Under **no** circumstances can usage under the qualification **exceed** the volume of your high-reliability water share



Conclusions

- No improvements for the Murray and minimal improvements for the Goulburn systems
- Other catchments
 - Shortfalls remain significant
 - Strict operations must remain in place